

## Influenza B virus Hemagglutinin (HA) antibody [HL2208]

Cat. No. GTX638212

Host	Rabbit
Clonality	Monoclonal
Isotype	IgG
Applications	WB, ICC/IF, ELISA
Reactivity	Influenza B virus

References ( 1 )

Package

100 µl, 25 µl

## Applications

## Application Note

\*Optimal dilutions/concentrations should be determined by the researcher.

Suggested dilution	Recommended dilution
WB	1:500-1:3000
ICC/IF	Assay dependent
ELISA	Assay dependent

Not tested in other applications.

## Product Note

This antibody is specific for Influenza B virus Hemagglutinin protein, and it does not cross-react with Influenza A virus Hemagglutinin protein (H1N1, H3N12, H5N1, H5N3, H5N8, H7N7, H9N2, and H10N3).

## Properties

Form	Liquid
Buffer	PBS
Preservative	No preservatives
Storage	Store as concentrated solution. Centrifuge briefly prior to opening vial. For short-term storage (1-2 weeks), store at 4°C. For long-term storage, aliquot and store at -20°C or below. Avoid multiple freeze-thaw cycles.
Concentration	1 mg/ml (Please refer to the vial label for the specific concentration.)
Immunogen	Recombinant fragment of Influenza B virus Hemagglutinin (HA). (Influenza B virus (B/Taiwan/753/2005))
Purification	Affinity purified by Protein A.
Conjugation	Unconjugated

## Note

For laboratory research use only. Not for any clinical, therapeutic, or diagnostic use in humans or animals. Not for animal or human consumption.

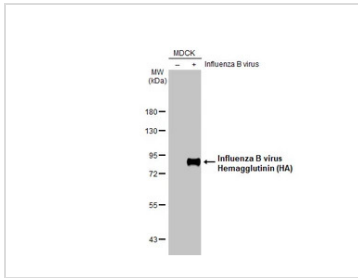
Purchasers shall not, and agree not to enable third parties to, analyze, copy, reverse engineer or otherwise attempt to determine the structure or sequence of the product.



For full product information, images and publications, please visit our [website](#).

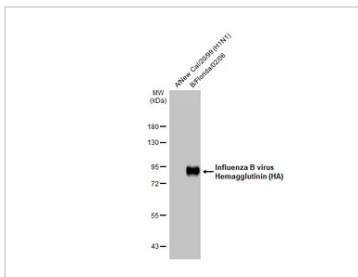
Date 2026 / 01 / 13 Page 1 of 2

## DATA IMAGES



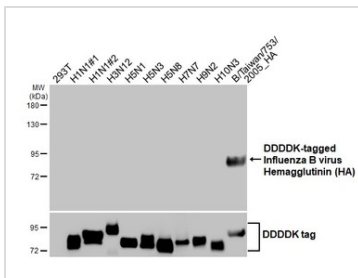
### GTX638212 WB Image

Non-infected (–) and infected (+) MDCK whole cell extracts (1 µg\_MDCK | B/Taiwan/70555/05 µg) were separated by 7.5% SDS-PAGE, and the membrane was blotted with Influenza B virus Hemagglutinin (HA) antibody [HL2208] (GTX638212) diluted at 1:1000. The HRP-conjugated anti-rabbit IgG antibody (GTX213110-01) was used to detect the primary antibody.



### GTX638212 WB Image

Influenza A (H1N1) and Influenza B viral lysate were separated by 7.5% SDS-PAGE, and the membrane was blotted with Influenza B virus Hemagglutinin (HA) antibody [HL2208] (GTX638212) diluted at 1:1000. The HRP-conjugated anti-rabbit IgG antibody (GTX213110-01) was used to detect the primary antibody.



### GTX638212 WB Image

Non-transfected and transfected 293T whole cell extracts were separated by 7.5% SDS-PAGE, and the membrane was blotted with Influenza B virus Hemagglutinin (HA) antibody [HL2208] (GTX638212) diluted at 1:5000. The HRP-conjugated anti-rabbit IgG antibody (GTX213110-01) was used to detect the primary antibody.



For full product information, images and publications, please visit our [website](https://www.genetex.com).