

RUNX1 antibody [HL2211]

Cat. No. GTX638215

Host	Rabbit
Clonality	Monoclonal
Isotype	IgG
Applications	WB, ICC/IF, IHC-P
Reactivity	Human, Mouse, Rat

Package
100 µl, 25 µl

Applications

Application Note

*Optimal dilutions/concentrations should be determined by the researcher.

Suggested dilution	Recommended dilution
WB	Assay dependent
ICC/IF	Assay dependent
IHC-P	Assay dependent

Not tested in other applications.

Observed MW (kDa) 50-58 kDa.

Properties

Form	Liquid
Buffer	PBS
Preservative	No preservative
Storage	Store as concentrated solution. Centrifuge briefly prior to opening vial. For short-term storage (1-2 weeks), store at 4°C. For long-term storage, aliquot and store at -20°C or below. Avoid multiple freeze-thaw cycles.
Concentration	1 mg/ml (Please refer to the vial label for the specific concentration.)
Immunogen	Recombinant fragment of human RUNX1
Purification	Affinity purified by Protein A.
Conjugation	Unconjugated

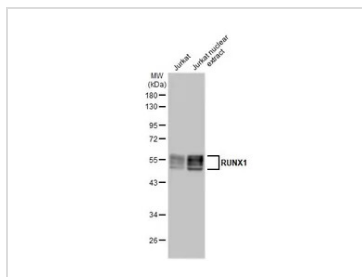
Note

For laboratory research use only. Not for any clinical, therapeutic, or diagnostic use in humans or animals. Not for animal or human consumption.

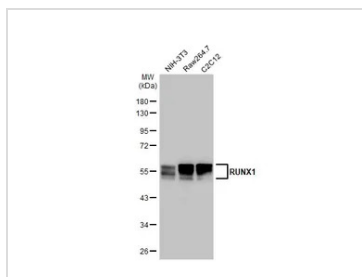
Purchasers shall not, and agree not to enable third parties to, analyze, copy, reverse engineer or otherwise attempt to determine the structure or sequence of the product.



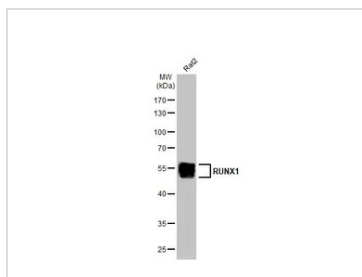
For full product information, images and publications, please visit our [website](#).

DATA IMAGES

GTx638215 WB Image

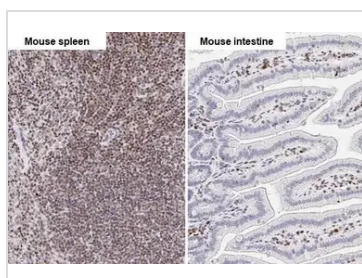
Jurkat whole cell and nuclear extracts (30 µg) were separated by 10% SDS-PAGE, and the membrane was blotted with RUNX1 antibody [HL2211] (GTx638215) diluted at 1:1000. The HRP-conjugated anti-rabbit IgG antibody (GTx213110-01) was used to detect the primary antibody.


GTx638215 WB Image

Various whole cell extracts (30 µg) were separated by 10% SDS-PAGE, and the membrane was blotted with RUNX1 antibody [HL2211] (GTx638215) diluted at 1:1000. The HRP-conjugated anti-rabbit IgG antibody (GTx213110-01) was used to detect the primary antibody, and the signal was developed with Trident ECL plus-Enhanced.


GTx638215 WB Image

Whole cell extract (30 µg) was separated by 10% SDS-PAGE, and the membrane was blotted with RUNX1 antibody [HL2211] (GTx638215) diluted at 1:1000. The HRP-conjugated anti-rabbit IgG antibody (GTx213110-01) was used to detect the primary antibody, and the signal was developed with Trident ECL plus-Enhanced.

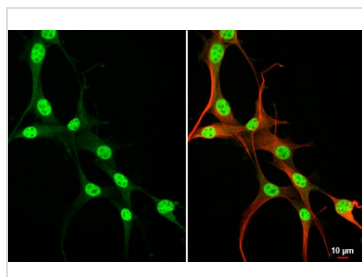

GTx638215 IHC-P Image

RUNX1 antibody [HL2211] detects RUNX1 protein by immunohistochemical analysis.

Sample: Paraffin-embedded mouse tissues.

RUNX1 stained by RUNX1 antibody [HL2211] (GTx638215) diluted at 1:100.

Antigen Retrieval: Citrate buffer, pH 6.0, 15 min


GTx638215 ICC/IF Image

RUNX1 antibody [HL2211] detects RUNX1 protein at cytoplasm and nucleus by immunofluorescent analysis.

Sample: U87-MG cells were fixed in 4% paraformaldehyde at RT for 15 min.

Green: RUNX1 stained by RUNX1 antibody [HL2211] (GTx638215) diluted at 1:200.

Red: alpha Tubulin, a cytoskeleton marker, stained by alpha Tubulin antibody [GT114] (GTx628802) diluted at 1:1000.



For full product information, images and publications, please visit our [website](https://www.genetex.com).