

Angiogenin antibody [HL2214]

Cat. No. GTX638218

Host	Rabbit
Clonality	Monoclonal
Isotype	IgG
Applications	WB, ICC/IF, IHC-P
Reactivity	Human, Mouse

Package
100 µl, 25 µl

Applications

Application Note

*Optimal dilutions/concentrations should be determined by the researcher.

Suggested dilution	Recommended dilution
WB	1:500-1:3000
ICC/IF	Assay dependent
IHC-P	Assay dependent

Not tested in other applications.

Observed MW (kDa) 17 kDa.

Properties

Form	Liquid
Buffer	PBS
Preservative	No preservatives
Storage	Store as concentrated solution. Centrifuge briefly prior to opening vial. For short-term storage (1-2 weeks), store at 4°C. For long-term storage, aliquot and store at -20°C or below. Avoid multiple freeze-thaw cycles.
Concentration	1 mg/ml (Please refer to the vial label for the specific concentration.)
Immunogen	Recombinant fragment of human Angiogenin.
Purification	Affinity purified by Protein A.
Conjugation	Unconjugated

Note

For laboratory research use only. Not for any clinical, therapeutic, or diagnostic use in humans or animals. Not for animal or human consumption.

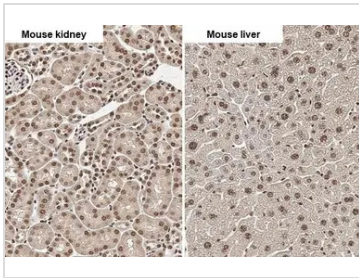
Purchasers shall not, and agree not to enable third parties to, analyze, copy, reverse engineer or otherwise attempt to determine the structure or sequence of the product.



For full product information, images and publications, please visit our [website](#).

Date 2026 / 01 / 11 Page 1 of 2

DATA IMAGES



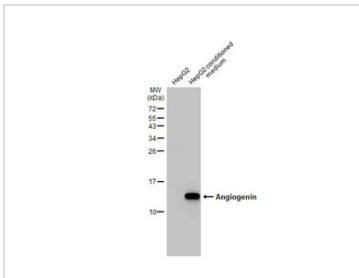
GTX638218 IHC-P Image

Angiogenin antibody [HL2214] detects Angiogenin protein by immunohistochemical analysis.

Sample: Paraffin-embedded mouse tissues.

Angiogenin stained by Angiogenin antibody [HL2214] (GTX638218) diluted at 1:100.

Antigen Retrieval: Citrate buffer, pH 6.0, 15 min

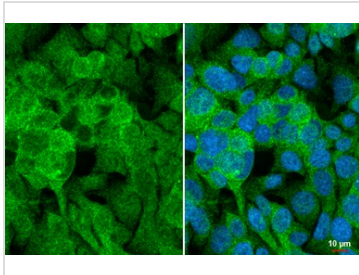


GTX638218 WB Image

HepG2 whole cell extract and conditioned medium (30 µg) were separated by 15% SDS-PAGE, and the

membrane was blotted with Angiogenin antibody [HL2214] (GTX638218) diluted at 1:1000. The HRP-

conjugated anti-rabbit IgG antibody (GTX213110-01) was used to detect the primary antibody.



GTX638218 ICC/IF Image

Angiogenin antibody [HL2214] detects Angiogenin protein at cytoplasm by immunofluorescent analysis.

Sample: HepG2 cells were fixed in 4% paraformaldehyde at RT for 15 min.

Green: Angiogenin stained by Angiogenin antibody [HL2214] (GTX638218) diluted at 1:500.

Blue: Fluoroshield with DAPI (GTX30920).



For full product information, images and publications, please visit our [website](https://www.genetex.com).