

PKC gamma antibody [HL2227]

Cat. No. GTX638272

Host	Rabbit
Clonality	Monoclonal
Isotype	IgG
Applications	WB, ICC/IF
Reactivity	Human, Mouse, Rat

Package
100 µl, 25 µl

Applications

Application Note

*Optimal dilutions/concentrations should be determined by the researcher.

Suggested dilution	Recommended dilution
WB	1:500-1:3000
ICC/IF	Assay dependent

Not tested in other applications.

Observed MW (kDa) 78 kDa.

Product Note

This antibody is specific for human PKC gamma protein, and it does not cross react with human PKC alpha, PKC beta 1, PKC beta 2, PKC delta, PKC epsilon, PKC zeta, PKC eta, and PKC theta protein.

Properties

Form	Liquid
Buffer	PBS
Preservative	No preservatives
Storage	Store as concentrated solution. Centrifuge briefly prior to opening vial. For short-term storage (1-2 weeks), store at 4°C. For long-term storage, aliquot and store at -20°C or below. Avoid multiple freeze-thaw cycles.
Concentration	1 mg/ml (Please refer to the vial label for the specific concentration.)
Immunogen	Recombinant fragment of human PKC gamma.
Purification	Affinity purified by Protein A.
Conjugation	Unconjugated

Note

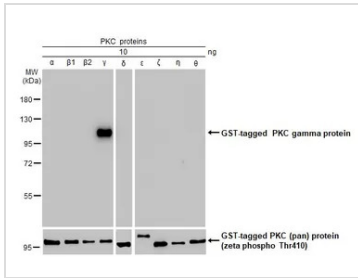
For laboratory research use only. Not for any clinical, therapeutic, or diagnostic use in humans or animals. Not for animal or human consumption.

Purchasers shall not, and agree not to enable third parties to, analyze, copy, reverse engineer or otherwise attempt to determine the structure or sequence of the product.



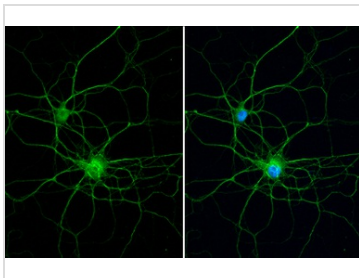
For full product information, images and publications, please visit our [website](#).

DATA IMAGES



GTX638272 WB Image

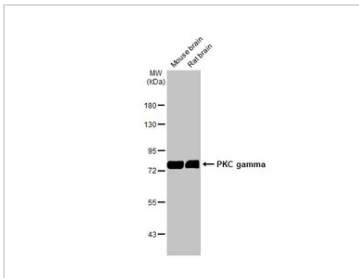
PKC proteins (10 ng) were separated by 7.5% SDS-PAGE, and the membrane was blotted with PKC gamma antibody [HL2227] (GTX638272) diluted at 1:1000. The HRP-conjugated anti-rabbit IgG antibody (GTX213110-01) was used to detect the primary antibody, and the signal was developed with Trident ECL plus-Enhanced.



GTX638272 ICC/IF Image

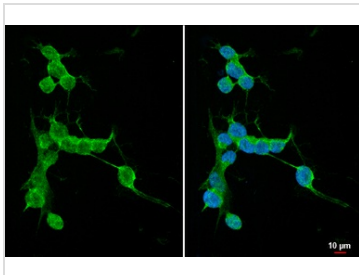
PKC gamma antibody [HL2227] detects PKC gamma protein at neurite by immunofluorescent analysis. Sample: DIV9 rat E18 primary hippocampal neuron cells were fixed in 4% paraformaldehyde at RT for 15 min.

Green: PKC gamma stained by PKC gamma antibody [HL2227] (GTX638272) diluted at 1:250.
Blue: Fluoroshield with DAPI (GTX30920).



GTX638272 WB Image

Various tissue extracts (50 µg) were separated by 7.5% SDS-PAGE, and the membrane was blotted with PKC gamma antibody [HL2227] (GTX638272) diluted at 1:5000. The HRP-conjugated anti-rabbit IgG antibody (GTX213110-01) was used to detect the primary antibody.



GTX638272 ICC/IF Image

PKC gamma antibody [HL2227] detects PKC gamma protein at cytoplasm by immunofluorescent analysis. Sample: SH-SY5Y cells were fixed in 4% paraformaldehyde at RT for 15 min.

Green: PKC gamma stained by PKC gamma antibody [HL2227] (GTX638272) diluted at 1:500.
Blue: Fluoroshield with DAPI (GTX30920).



For full product information, images and publications, please visit our [website](https://www.genetex.com).