

## Dengue virus NS3 protein antibody [HL2239]

Cat. No. GTX638284

<b>Host</b>	Rabbit
<b>Clonality</b>	Monoclonal
<b>Isotype</b>	IgG
<b>Applications</b>	WB, ICC/IF
<b>Reactivity</b>	Dengue virus 1, Dengue virus 2, Dengue virus 3, Dengue virus 4

 Review (1)

Package  
100 µl, 25 µl

## Applications

## Application Note

\*Optimal dilutions/concentrations should be determined by the researcher.

Suggested dilution	Recommended dilution
WB	1:5000-1:200000
ICC/IF	Assay dependent

Not tested in other applications.

## Product Note

This antibody is specific for Dengue virus 1/2/3/4 NS3 protein, and it does not cross react with JEV and Zika NS3 protein. The validated Dengue virus serotype for each application may differ. Please refer to the validated data.

## Properties

<b>Form</b>	Liquid
<b>Buffer</b>	PBS
<b>Preservative</b>	No preservatives
<b>Storage</b>	Store as concentrated solution. Centrifuge briefly prior to opening vial. For short-term storage (1-2 weeks), store at 4°C. For long-term storage, aliquot and store at -20°C or below. Avoid multiple freeze-thaw cycles.
<b>Concentration</b>	1 mg/ml (Please refer to the vial label for the specific concentration.)
<b>Immunogen</b>	Recombinant fragment of Dengue virus NS3 protein. (strain Thailand/16681/1964)
<b>Purification</b>	Affinity purified by Protein A.
<b>Conjugation</b>	Unconjugated

## Note

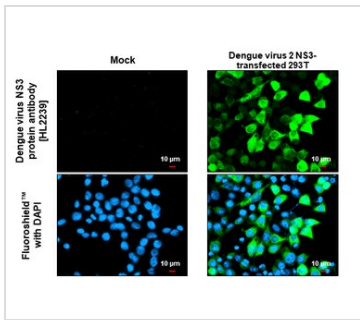
For laboratory research use only. Not for any clinical, therapeutic, or diagnostic use in humans or animals. Not for animal or human consumption.

Purchasers shall not, and agree not to enable third parties to, analyze, copy, reverse engineer or otherwise attempt to determine the structure or sequence of the product.



For full product information, images and publications, please visit our [website](#).

DATA IMAGES



**GTX638284 ICC/IF Image**

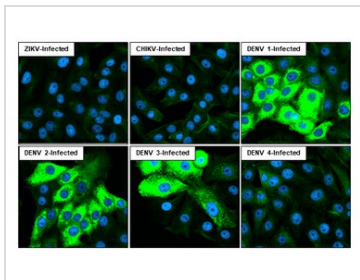
Dengue virus NS3 protein antibody [HL2239] detects Dengue virus NS3 protein by immunofluorescent analysis.

Sample: Mock and transfected 293T cells were fixed in ice-cold MeOH for 5 min.

Green: Dengue virus NS3 protein stained by Dengue virus NS3 protein antibody [HL2239] (GTX638284) diluted at 1:500.

Blue: Fluoroshield with DAPI (GTX30920).

Scale bar= 10μm.



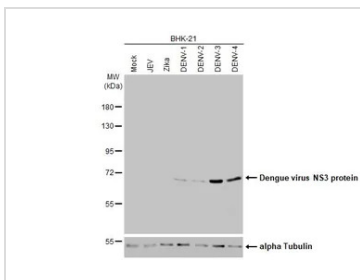
**GTX638284 ICC/IF Image**

Immunofluorescent analysis of Dengue virus infected cells using Dengue virus NS3 protein antibody [HL2239] antibody (GTX638284).

Sample: Multiple virus infected cells slide.

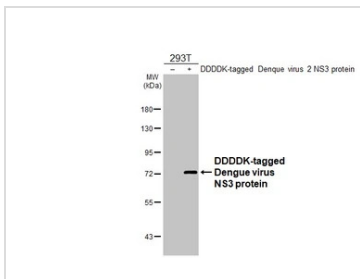
Green: Dengue virus NS3 protein antibody [HL2239] antibody (GTX638284) diluted at 1:100.

Blue: Fluoroshield with DAPI (GTX30920).



**GTX638284 WB Image**

Non-infected and infected BHK-21 whole cell extracts (5 μg) were separated by 7.5% SDS-PAGE, and the membrane was blotted with Dengue virus NS3 protein antibody [HL2239] (GTX638284) diluted at 1:200000. The HRP-conjugated anti-rabbit IgG antibody (GTX213110-01) was used to detect the primary antibody.



**GTX638284 WB Image**

Non-transfected (-) and transfected (+) 293T whole cell extracts (30 μg) were separated by 7.5% SDS-PAGE, and the membrane was blotted with Dengue virus NS3 protein antibody [HL2239] (GTX638284) diluted at 1:200000. The HRP-conjugated anti-rabbit IgG antibody (GTX213110-01) was used to detect the primary antibody.



For full product information, images and publications, please visit our [website](#).