

## RPLP2 antibody [HL2256]

**Cat. No. GTX638308**

<b>Host</b>	Rabbit
<b>Clonality</b>	Monoclonal
<b>Isotype</b>	IgG
<b>Applications</b>	WB, ICC/IF, IHC-P
<b>Reactivity</b>	Human, Mouse, Rat, Zebrafish

**Package**  
100 µl, 25 µl

## Applications

**Application Note**

\*Optimal dilutions/concentrations should be determined by the researcher.

Suggested dilution	Recommended dilution
WB	1:500-1:3000
ICC/IF	Assay dependent
IHC-P	Assay dependent

Not tested in other applications.

**Observed MW (kDa)** 12 kDa.

## Properties

<b>Form</b>	Liquid
<b>Buffer</b>	PBS
<b>Preservative</b>	No preservatives
<b>Storage</b>	Store as concentrated solution. Centrifuge briefly prior to opening vial. For short-term storage (1-2 weeks), store at 4°C. For long-term storage, aliquot and store at -20°C or below. Avoid multiple freeze-thaw cycles.
<b>Concentration</b>	1 mg/ml (Please refer to the vial label for the specific concentration.)
<b>Immunogen</b>	Recombinant fragment of human RPLP2.
<b>Purification</b>	Affinity purified by Protein A.
<b>Conjugation</b>	Unconjugated

**Note**

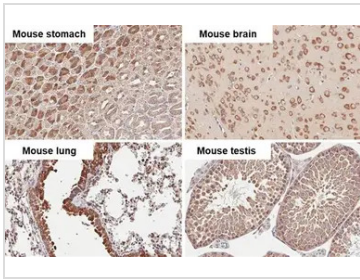
For laboratory research use only. Not for any clinical, therapeutic, or diagnostic use in humans or animals. Not for animal or human consumption.

Purchasers shall not, and agree not to enable third parties to, analyze, copy, reverse engineer or otherwise attempt to determine the structure or sequence of the product.



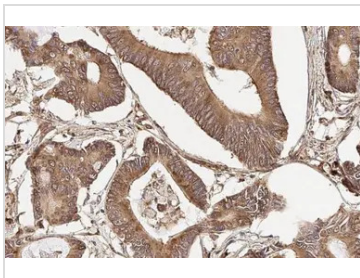
For full product information, images and publications, please visit our [website](#).

DATA IMAGES



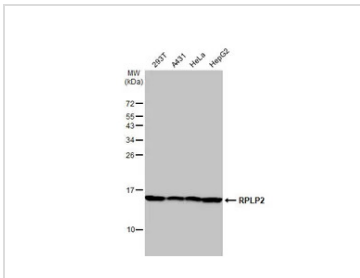
**GTX638308 IHC-P Image**

RPLP2 antibody [HL2256] detects RPLP2 protein by immunohistochemical analysis.  
 Sample: Paraffin-embedded mouse tissues.  
 RPLP2 stained by RPLP2 antibody [HL2256] (GTX638308) diluted at 1:100.  
 Antigen Retrieval: Citrate buffer, pH 6.0, 15 min



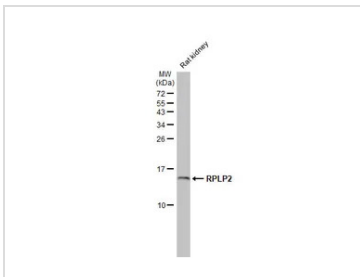
**GTX638308 IHC-P Image**

RPLP2 antibody [HL2256] detects secreted RPLP2 protein by immunohistochemical analysis.  
 Sample: Paraffin-embedded human colon cancer.  
 RPLP2 stained by RPLP2 antibody [HL2256] (GTX638308) diluted at 1:100.  
 Antigen Retrieval: Citrate buffer, pH 6.0, 15 min



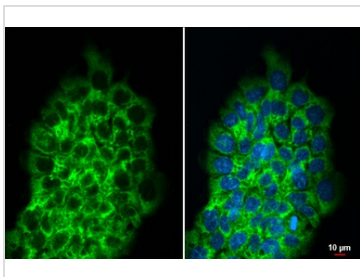
**GTX638308 WB Image**

Various whole cell extracts (30 µg) were separated by 15% SDS-PAGE, and the membrane was blotted with RPLP2 antibody [HL2256] (GTX638308) diluted at 1:1000. The HRP-conjugated anti-rabbit IgG antibody (GTX213110-01) was used to detect the primary antibody.



**GTX638308 WB Image**

Rat tissue extract (50 µg) was separated by 15% SDS-PAGE, and the membrane was blotted with RPLP2 antibody [HL2256] (GTX638308) diluted at 1:1000. The HRP-conjugated anti-rabbit IgG antibody (GTX213110-01) was used to detect the primary antibody, and the signal was developed with Trident ECL plus-Enhanced.



**GTX638308 ICC/IF Image**

RPLP2 antibody [HL2256] detects RPLP2 protein at cytoplasm by immunofluorescent analysis.  
 Sample: A431 cells were fixed in ice-cold MeOH for 5 min.  
 Green: RPLP2 stained by RPLP2 antibody [HL2256] (GTX638308) diluted at 1:500.  
 Blue: Fluoroshield with DAPI (GTX30920).



For full product information, images and publications, please visit our [website](#).