

GPS2 antibody [HL2276]

Cat. No. GTX638329

Host	Rabbit
Clonality	Monoclonal
Isotype	IgG
Applications	WB, ICC/IF, IHC-P
Reactivity	Human, Mouse, Rat, Zebrafish

Package
100 µl, 25 µl

Applications

Application Note

*Optimal dilutions/concentrations should be determined by the researcher.

Suggested dilution	Recommended dilution
WB	1:500-1:3000
ICC/IF	Assay dependent
IHC-P	Assay dependent

Not tested in other applications.

Observed MW (kDa) 37 kDa.

Properties

Form	Liquid
Buffer	PBS
Preservative	No preservatives
Storage	Store as concentrated solution. Centrifuge briefly prior to opening vial. For short-term storage (1-2 weeks), store at 4°C. For long-term storage, aliquot and store at -20°C or below. Avoid multiple freeze-thaw cycles.
Concentration	2 mg/ml (Please refer to the vial label for the specific concentration.)
Immunogen	Recombinant fragment of human GPS2.
Purification	Affinity purified by Protein A.
Conjugation	Unconjugated

Note

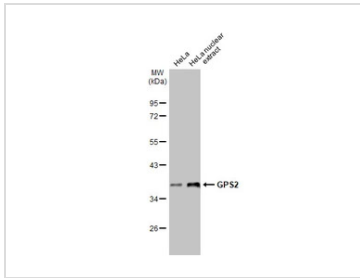
For laboratory research use only. Not for any clinical, therapeutic, or diagnostic use in humans or animals. Not for animal or human consumption.

Purchasers shall not, and agree not to enable third parties to, analyze, copy, reverse engineer or otherwise attempt to determine the structure or sequence of the product.

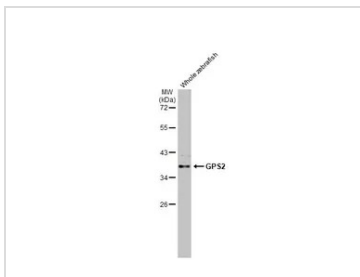


For full product information, images and publications, please visit our [website](#).

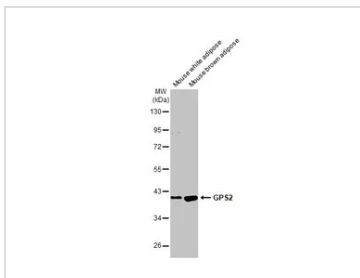
DATA IMAGES

**GTX638329 WB Image**

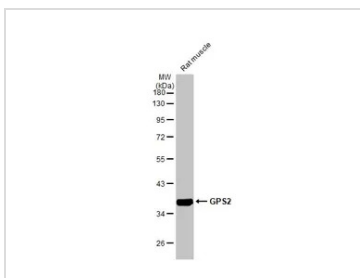
HeLa whole cell and nuclear extracts (30 µg) were separated by 10% SDS-PAGE, and the membrane was blotted with GPS2 antibody [HL2276] (GTX638329) diluted at 1:1000. The HRP-conjugated anti-rabbit IgG antibody (GTX213110-01) was used to detect the primary antibody, and the signal was developed with Trident ECL plus-Enhanced.

**GTX638329 WB Image**

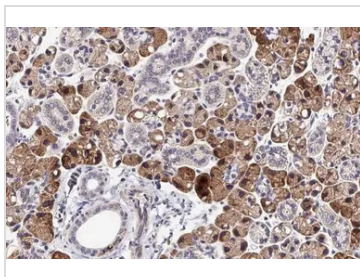
Whole zebrafish extract (30 µg) was separated by 10% SDS-PAGE, and the membrane was blotted with GPS2 antibody [HL2276] (GTX638329) diluted at 1:1000. The HRP-conjugated anti-rabbit IgG antibody (GTX213110-01) was used to detect the primary antibody, and the signal was developed with Trident ECL plus-Enhanced.

**GTX638329 WB Image**

Various tissue extracts (30 µg) were separated by 10% SDS-PAGE, and the membrane was blotted with GPS2 antibody [HL2276] (GTX638329) diluted at 1:1000. The HRP-conjugated anti-rabbit IgG antibody (GTX213110-01) was used to detect the primary antibody.

**GTX638329 WB Image**

Rat tissue extract (50 µg) was separated by 10% SDS-PAGE, and the membrane was blotted with GPS2 antibody [HL2276] (GTX638329) diluted at 1:10000. The HRP-conjugated anti-rabbit IgG antibody (GTX213110-01) was used to detect the primary antibody.

**GTX638329 IHC-P Image**

GPS2 antibody [HL2276] detects GPS2 protein at mitochondria by immunohistochemical analysis.

Sample: Paraffin-embedded mouse salivary gland.

GPS2 stained by GPS2 antibody [HL2276] (GTX638329) diluted at 1:1000.

Antigen Retrieval: Citrate buffer, pH 6.0, 15 min



For full product information, images and publications, please visit our [website](#).