

GLP1R antibody [HL2297]

Cat. No. GTX638352

| | |
|---------------------|-------------------|
| Host | Rabbit |
| Clonality | Monoclonal |
| Isotype | IgG |
| Applications | IHC-P |
| Reactivity | Human, Mouse, Rat |

Package
100 µl, 25 µl

Applications

Application Note

*Optimal dilutions/concentrations should be determined by the researcher.

| Suggested dilution | Recommended dilution |
|--------------------|----------------------|
| IHC-P | Assay dependent |

Not tested in other applications.

Product Note This antibody was raised against human GLP1R Extracellular domain.

Properties

| | |
|----------------------|--|
| Form | Liquid |
| Buffer | PBS |
| Preservative | No preservatives |
| Storage | Store as concentrated solution. Centrifuge briefly prior to opening vial. For short-term storage (1-2 weeks), store at 4°C. For long-term storage, aliquot and store at -20°C or below. Avoid multiple freeze-thaw cycles. |
| Concentration | 2 mg/ml (Please refer to the vial label for the specific concentration.) |
| Immunogen | Synthetic peptide encompassing a sequence within the Extracellular domain human of GLP1R. The exact sequence is proprietary. |
| Purification | Affinity purified by Protein A. |
| Conjugation | Unconjugated |

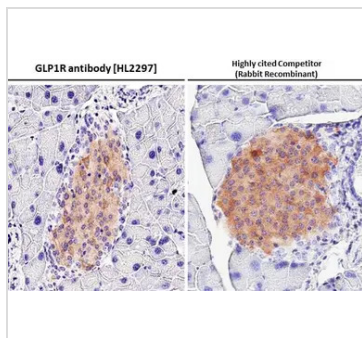
Note

For laboratory research use only. Not for any clinical, therapeutic, or diagnostic use in humans or animals. Not for animal or human consumption.

Purchasers shall not, and agree not to enable third parties to, analyze, copy, reverse engineer or otherwise attempt to determine the structure or sequence of the product.



For full product information, images and publications, please visit our [website](#).

DATA IMAGES

GTX638352 IHC-P Image

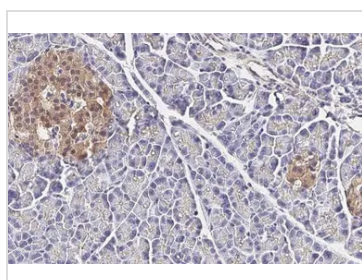
GLP1R antibody [HL2297] detects GLP1R protein at cell membrane and cytoplasm by immunohistochemical analysis.

Sample: Paraffin-embedded mouse pancreas.

GLP1R stained by GLP1R antibody [HL2297] (GTX638352) diluted at 1:2000 and competitor's antibody (ab218532) diluted at 1:2000.

Antigen Retrieval: Citrate buffer, pH 6.0, 15 min

*Competitor's antibody is not affiliated with GeneTex and does not endorse this product.

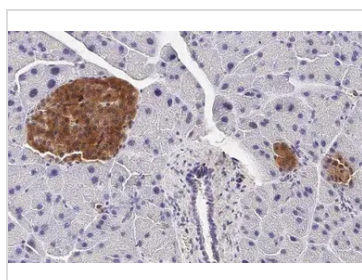

GTX638352 IHC-P Image

GLP1R antibody [HL2297] detects GLP1R protein at cell membrane by immunohistochemical analysis.

Sample: Paraffin-embedded rat pancreas.

GLP1R stained by GLP1R antibody [HL2297] (GTX638352) diluted at 1:200.

Antigen Retrieval: Citrate buffer, pH 6.0, 15 min

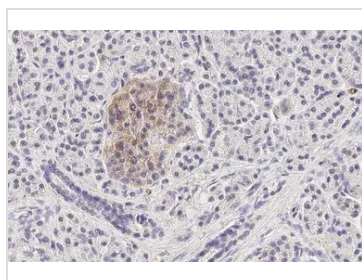

GTX638352 IHC-P Image

GLP1R antibody [HL2297] detects GLP1R protein at cell membrane by immunohistochemical analysis.

Sample: Paraffin-embedded mouse pancreas.

GLP1R stained by GLP1R antibody [HL2297] (GTX638352) diluted at 1:200.

Antigen Retrieval: Citrate buffer, pH 6.0, 15 min


GTX638352 IHC-P Image

GLP1R antibody [HL2297] detects GLP1R protein at cell membrane by immunohistochemical analysis.

Sample: Paraffin-embedded human pancreas.

GLP1R stained by GLP1R antibody [HL2297] (GTX638352) diluted at 1:200.

Antigen Retrieval: Citrate buffer, pH 6.0, 15 min



For full product information, images and publications, please visit our [website](https://www.genetex.com).