

Cathepsin S antibody [HL2302]

Cat. No. GTX638369

Host	Rabbit
Clonality	Monoclonal
Isotype	IgG
Applications	WB, ICC/IF, IHC-P
Reactivity	Human, Mouse, Rat

References (1)

Package

100 µl, 25 µl

Applications

Application Note

*Optimal dilutions/concentrations should be determined by the researcher.

Suggested dilution	Recommended dilution
WB	1:500-1:3000
ICC/IF	Assay dependent
IHC-P	Assay dependent

Not tested in other applications.

Observed MW (kDa) 24 (mature form), 37 (pro-form) kDa.

Properties

Form	Liquid
Buffer	PBS
Preservative	No preservatives
Storage	Store as concentrated solution. Centrifuge briefly prior to opening vial. For short-term storage (1-2 weeks), store at 4°C. For long-term storage, aliquot and store at -20°C or below. Avoid multiple freeze-thaw cycles.
Concentration	1 mg/ml (Please refer to the vial label for the specific concentration.)
Immunogen	Recombinant fragment of human Cathepsin S.
Purification	Affinity purified by Protein A.
Conjugation	Unconjugated

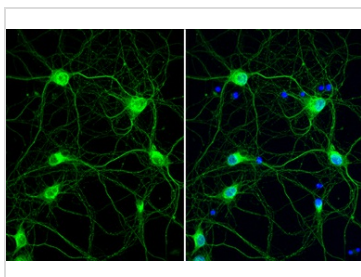
Note

For laboratory research use only. Not for any clinical, therapeutic, or diagnostic use in humans or animals. Not for animal or human consumption.

Purchasers shall not, and agree not to enable third parties to, analyze, copy, reverse engineer or otherwise attempt to determine the structure or sequence of the product.

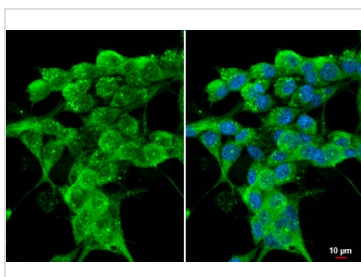
For full product information, images and publications, please visit our [website](#).

DATA IMAGES



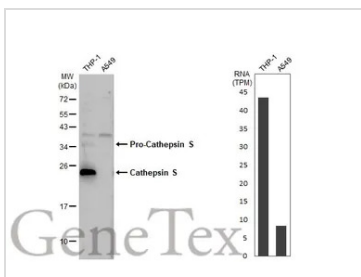
GTX638369 ICC/IF Image

Cathepsin S antibody [HL2302] detects Cathepsin S protein at fiber by immunofluorescent analysis.
 Sample: DIV9 rat E18 primary cortical neuron cells were fixed in 4% paraformaldehyde at RT for 15 min.
 Green: Cathepsin S stained by Cathepsin S antibody [HL2302] (GTX638369) diluted at 1:250.
 Blue: Fluoroshield with DAPI (GTX30920).



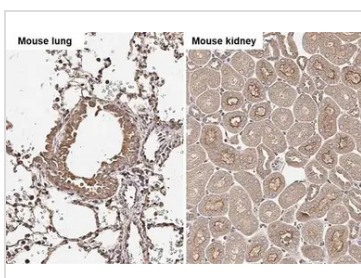
GTX638369 ICC/IF Image

Cathepsin S antibody [HL2302] detects Cathepsin S protein at cytoplasmic vesicle by immunofluorescent analysis.
 Sample: U87-MG cells were fixed in ice-cold MeOH for 5 min.
 Green: Cathepsin S stained by Cathepsin S antibody [HL2302] (GTX638369) diluted at 1:500.
 Blue: Fluoroshield with DAPI (GTX30920).



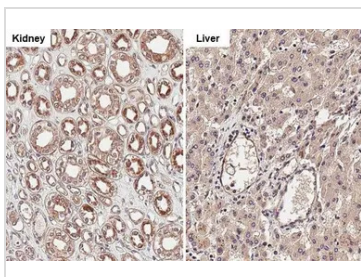
GTX638369 WB Image

Various whole cell extracts (30 µg) were separated by 12% SDS-PAGE, and the membrane was blotted with Cathepsin S antibody [HL2302] (GTX638369) diluted at 1:1000. The HRP-conjugated anti-rabbit IgG antibody (GTX213110-01) was used to detect the primary antibody. Corresponding RNA expression data for the same cell lines are based on Human Protein Atlas program.



GTX638369 IHC-P Image

Cathepsin S antibody [HL2302] detects Cathepsin S protein by immunohistochemical analysis.
 Sample: Paraffin-embedded mouse tissues.
 Cathepsin S stained by Cathepsin S antibody [HL2302] (GTX638369) diluted at 1:100.
 Antigen Retrieval: Citrate buffer, pH 6.0, 15 min



GTX638369 IHC-P Image

Cathepsin S antibody [HL2302] detects Cathepsin S protein at cytoplasm by immunohistochemical analysis.
 Sample: Paraffin-embedded human tissue.
 Cathepsin S stained by Cathepsin S antibody [HL2302] (GTX638369) diluted at 1:100.
 Antigen Retrieval: Citrate buffer, pH 6.0, 15 min



For full product information, images and publications, please visit our [website](http://www.genetex.com).