

TLR3 antibody [HL2314]

Cat. No. GTX638477

Host	Rabbit
Clonality	Monoclonal
Isotype	IgG
Applications	WB, IHC-P
Reactivity	Human, Mouse, Rat, Cat, Dog

Package
100 µl, 25 µl

Applications

Application Note

*Optimal dilutions/concentrations should be determined by the researcher.

Suggested dilution	Recommended dilution
WB	1:500-1:3000
IHC-P	Assay dependent

Not tested in other applications.

Observed MW (kDa) 60-72 (cleaved form), 115-130 (pro-form) kDa.

Product Note The immunogen sequence of this antibody is within cleaved form TLR3 protein, so this antibody is expected to detect both full-length and cleaved form TLR3 protein.

Properties

Form	Liquid
Buffer	PBS
Preservative	No preservatives
Storage	Store as concentrated solution. Centrifuge briefly prior to opening vial. For short-term storage (1-2 weeks), store at 4°C. For long-term storage, aliquot and store at -20°C or below. Avoid multiple freeze-thaw cycles.
Concentration	1 mg/ml (Please refer to the vial label for the specific concentration.)
Immunogen	Recombinant fragment of human TLR3.
Purification	Affinity purified by Protein A.
Conjugation	Unconjugated

Note

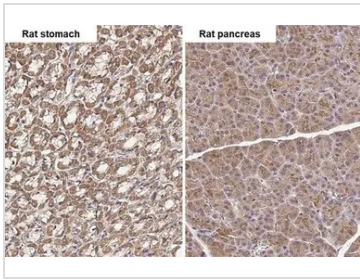
For laboratory research use only. Not for any clinical, therapeutic, or diagnostic use in humans or animals. Not for animal or human consumption.

Purchasers shall not, and agree not to enable third parties to, analyze, copy, reverse engineer or otherwise attempt to determine the structure or sequence of the product.



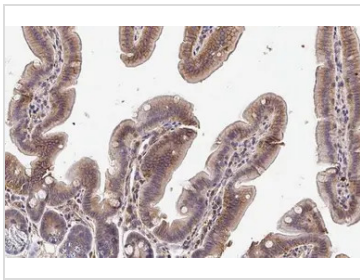
For full product information, images and publications, please visit our [website](#).

DATA IMAGES



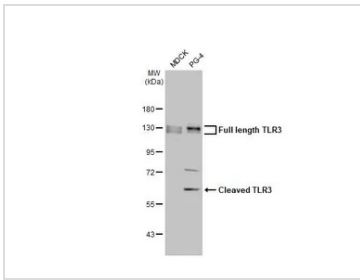
GTX638477 IHC-P Image

TLR3 antibody [HL2314] detects TLR3 protein by immunohistochemical analysis.
 Sample: Paraffin-embedded rat tissues.
 TLR3 stained by TLR3 antibody [HL2314] (GTX638477) diluted at 1:100.
 Antigen Retrieval: Citrate buffer, pH 6.0, 15 min



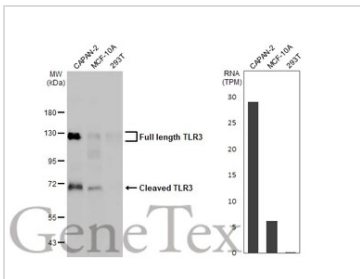
GTX638477 IHC-P Image

TLR3 antibody [HL2314] detects TLR3 protein at cytoplasm by immunohistochemical analysis.
 Sample: Paraffin-embedded mouse intestine.
 TLR3 stained by TLR3 antibody [HL2314] (GTX638477) diluted at 1:100.
 Antigen Retrieval: Citrate buffer, pH 6.0, 15 min



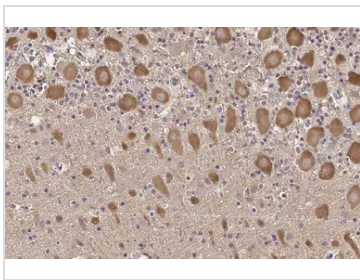
GTX638477 WB Image

Various whole cell extracts (30 µg) were separated by 7.5% SDS-PAGE, and the membrane was blotted with TLR3 antibody [HL2314] (GTX638477) diluted at 1:1000. The HRP-conjugated anti-rabbit IgG antibody (GTX213110-01) was used to detect the primary antibody.



GTX638477 WB Image

Various whole cell extracts (30 µg) were separated by 7.5% SDS-PAGE, and the membrane was blotted with TLR3 antibody [HL2314] (GTX638477) diluted at 1:1000. The HRP-conjugated anti-rabbit IgG antibody (GTX213110-01) was used to detect the primary antibody, and the signal was developed with Trident femto Western HRP Substrate. Corresponding RNA expression data for the same cell lines are based on Human Protein Atlas program.



GTX638477 IHC-P Image

TLR3 antibody [HL2314] detects TLR3 protein at cytoplasm by immunohistochemical analysis.
 Sample: Paraffin-embedded dog brain.
 TLR3 stained by TLR3 antibody [HL2314] (GTX638477) diluted at 1:100.
 Antigen Retrieval: Citrate buffer, pH 6.0, 15 min



For full product information, images and publications, please visit our [website](#).