

RPL32 antibody [HL2331]

Cat. No. GTX638494

Host	Rabbit
Clonality	Monoclonal
Isotype	IgG
Applications	WB, ICC/IF, IHC-P, IHC-Wm
Reactivity	Human, Mouse, Rat, Zebrafish, Dog, Japanese Medaka

Package
100 µl, 25 µl

Applications

Application Note

*Optimal dilutions/concentrations should be determined by the researcher.

Suggested dilution	Recommended dilution
WB	1:500-1:10000
ICC/IF	Assay dependent
IHC-P	Assay dependent
IHC-Wm	Assay dependent

Not tested in other applications.

Observed MW (kDa) 16 kDa.

Properties

Form	Liquid
Buffer	PBS
Preservative	No preservatives
Storage	Store as concentrated solution. Centrifuge briefly prior to opening vial. For short-term storage (1-2 weeks), store at 4°C. For long-term storage, aliquot and store at -20°C or below. Avoid multiple freeze-thaw cycles.
Concentration	1 mg/ml (Please refer to the vial label for the specific concentration.)
Immunogen	Full length of human RPL32 recombinant protein.
Purification	Affinity purified by Protein A.
Conjugation	Unconjugated

Note

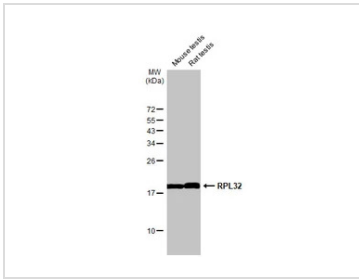
For laboratory research use only. Not for any clinical, therapeutic, or diagnostic use in humans or animals. Not for animal or human consumption.

Purchasers shall not, and agree not to enable third parties to, analyze, copy, reverse engineer or otherwise attempt to determine the structure or sequence of the product.



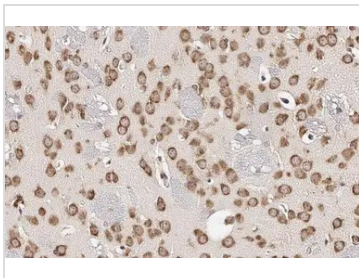
For full product information, images and publications, please visit our [website](#).

DATA IMAGES



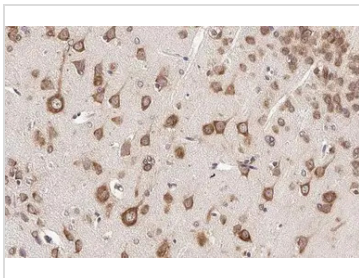
GTX638494 WB Image

Various tissue extracts (50 µg) were separated by 15% SDS-PAGE, and the membrane was blotted with RPL32 antibody [HL2331] (GTX638494) diluted at 1:1000. The HRP-conjugated anti-rabbit IgG antibody (GTX213110-01) was used to detect the primary antibody.



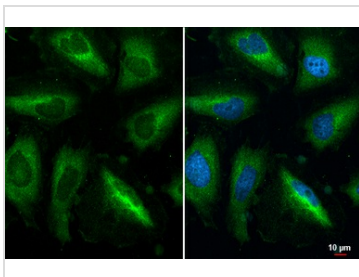
GTX638494 IHC-P Image

RPL32 antibody [HL2331] detects RPL32 protein at cytoplasm by immunohistochemical analysis. Sample: Paraffin-embedded mouse brain. RPL32 stained by RPL32 antibody [HL2331] (GTX638494) diluted at 1:100. Antigen Retrieval: Citrate buffer, pH 6.0, 15 min



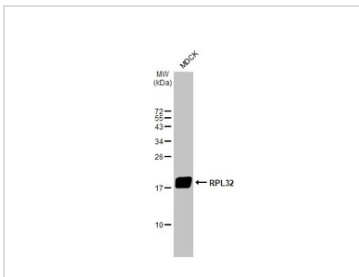
GTX638494 IHC-P Image

RPL32 antibody [HL2331] detects RPL32 protein at cytoplasm by immunohistochemical analysis. Sample: Paraffin-embedded rat brain. RPL32 stained by RPL32 antibody [HL2331] (GTX638494) diluted at 1:100. Antigen Retrieval: Citrate buffer, pH 6.0, 15 min



GTX638494 ICC/IF Image

RPL32 antibody [HL2331] detects RPL32 protein at cytoplasm by immunofluorescent analysis. Sample: HeLa cells were fixed in 4% paraformaldehyde at RT for 15 min. Green: RPL32 stained by RPL32 antibody [HL2331] (GTX638494) diluted at 1:500. Blue: Fluoroshield with DAPI (GTX30920).



GTX638494 WB Image

Whole cell extract (30 µg) was separated by 15% SDS-PAGE, and the membrane was blotted with RPL32 antibody [HL2331] (GTX638494) diluted at 1:1000. The HRP-conjugated anti-rabbit IgG antibody (GTX213110-01) was used to detect the primary antibody.



For full product information, images and publications, please visit our [website](#).