

RNase L antibody [HL2340]

Cat. No. GTX638543

Host	Rabbit
Clonality	Monoclonal
Isotype	IgG
Applications	WB, ICC/IF, IHC-P
Reactivity	Human, Mouse, Rat

Package
100 µl, 25 µl

Applications

Application Note

*Optimal dilutions/concentrations should be determined by the researcher.

Suggested dilution	Recommended dilution
WB	1:500-1:3000
ICC/IF	Assay dependent
IHC-P	Assay dependent

Not tested in other applications.

Observed MW (kDa) 84 kDa.

Properties

Form	Liquid
Buffer	PBS
Preservative	No preservatives
Storage	Store as concentrated solution. Centrifuge briefly prior to opening vial. For short-term storage (1-2 weeks), store at 4°C. For long-term storage, aliquot and store at -20°C or below. Avoid multiple freeze-thaw cycles.
Concentration	1 mg/ml (Please refer to the vial label for the specific concentration.)
Immunogen	Recombinant fragment of human RNase L
Purification	Affinity purified by Protein A.
Conjugation	Unconjugated

Note

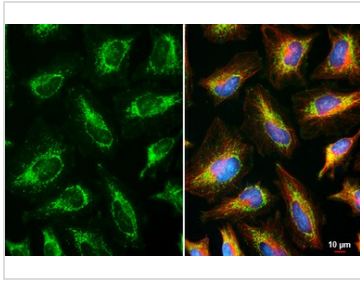
For laboratory research use only. Not for any clinical, therapeutic, or diagnostic use in humans or animals. Not for animal or human consumption.

Purchasers shall not, and agree not to enable third parties to, analyze, copy, reverse engineer or otherwise attempt to determine the structure or sequence of the product.



For full product information, images and publications, please visit our [website](#).

DATA IMAGES


GTx638543 ICC/IF Image

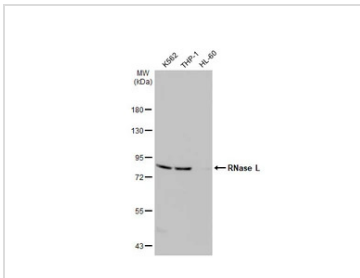
RNase L antibody [HL2340] detects RNase L protein at mitochondria by immunofluorescent analysis.

Sample: HeLa cells were fixed in ice-cold MeOH for 5 min.

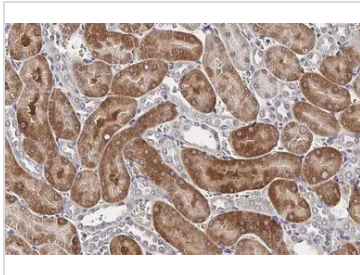
Green: RNase L stained by RNase L antibody [HL2340] (GTx638543) diluted at 1:1000.

Red: alpha Tubulin, a cytoskeleton marker, stained by alpha Tubulin antibody [GT114] (GTx628802) diluted at 1:1000.

Blue: Fluoroshield with DAPI (GTx30920).


GTx638543 WB Image

Various whole cell extracts (30 µg) were separated by 7.5% SDS-PAGE, and the membrane was blotted with RNase L antibody [HL2340] (GTx638543) diluted at 1:1000. The HRP-conjugated anti-rabbit IgG antibody (GTx213110-01) was used to detect the primary antibody.

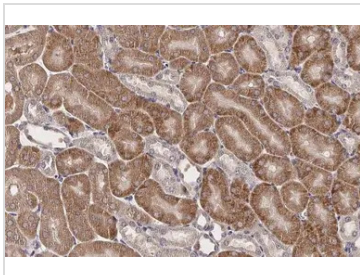

GTx638543 IHC-P Image

RNase L antibody [HL2340] detects RNase L protein at mitochondria by immunohistochemical analysis.

Sample: Paraffin-embedded rat kidney.

RNase L stained by RNase L antibody [HL2340] (GTx638543) diluted at 1:200.

Antigen Retrieval: Citrate buffer, pH 6.0, 15 min


GTx638543 IHC-P Image

RNase L antibody [HL2340] detects RNase L protein at mitochondria by immunohistochemical analysis.

Sample: Paraffin-embedded mouse kidney.

RNase L stained by RNase L antibody [HL2340] (GTx638543) diluted at 1:200.

Antigen Retrieval: Citrate buffer, pH 6.0, 15 min



For full product information, images and publications, please visit our [website](https://www.genetex.com).