

## LAT1 / SLC7A5 antibody [HL2353]

Cat. No. GTX638556

|              |                   |
|--------------|-------------------|
| Host         | Rabbit            |
| Clonality    | Monoclonal        |
| Isotype      | IgG               |
| Applications | WB, ICC/IF, IHC-P |
| Reactivity   | Human, Mouse, Rat |

Package  
100 µl, 25 µl

## Applications

## Application Note

\*Optimal dilutions/concentrations should be determined by the researcher.

| Suggested dilution | Recommended dilution |
|--------------------|----------------------|
| WB                 | 1:500-1:3000         |
| ICC/IF             | Assay dependent      |
| IHC-P              | Assay dependent      |

Not tested in other applications.

|                   |  |
|-------------------|--|
| Observed MW (kDa) | 36-42, 45 kDa.   |
| Product Note      | This antibody was raised against human LAT1 / SLC7A5 Intracellular domain. |

## Properties

|               |  |
|---------------|--|
| Form          | Liquid   |
| Buffer        | PBS  |
| Preservative  | No preservatives   |
| Storage       | Store as concentrated solution. Centrifuge briefly prior to opening vial. For short-term storage (1-2 weeks), store at 4°C. For long-term storage, aliquot and store at -20°C or below. Avoid multiple freeze-thaw cycles. |
| Concentration | 1 mg/ml (Please refer to the vial label for the specific concentration.)   |
| Immunogen     | Recombinant protein encompassing a sequence within the Intracellular domain of human LAT1 / SLC7A5. The exact sequence is proprietary.   |
| Purification  | Affinity purified by Protein A.  |
| Conjugation   | Unconjugated   |



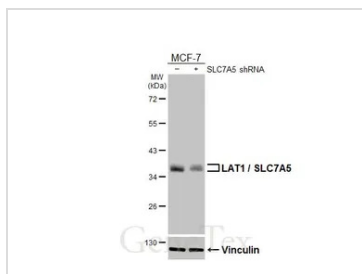
For full product information, images and publications, please visit our [website](#).

Date 2026 / 01 / 13 Page 1 of 2

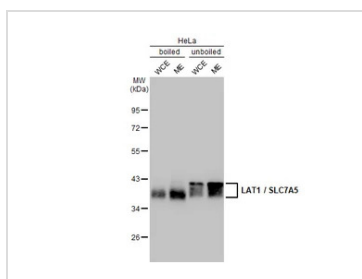
For laboratory research use only. Not for any clinical, therapeutic, or diagnostic use in humans or animals. Not for animal or human consumption.

**Note**

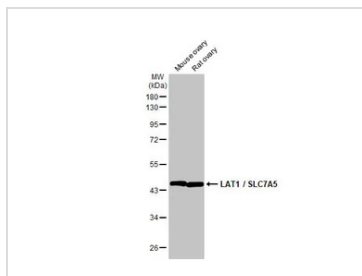
Purchasers shall not, and agree not to enable third parties to, analyze, copy, reverse engineer or otherwise attempt to determine the structure or sequence of the product.

**DATA IMAGES**

**GTX638556 WB Image**

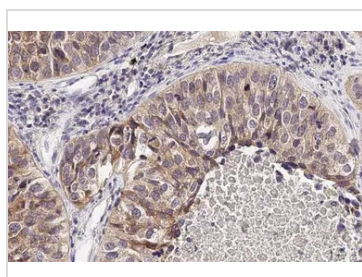
Non-transfected (–) and transfected (+) MCF-7 whole cell extracts (30 µg) were separated by 10% SDS-PAGE, and the membrane was blotted with LAT1 / SLC7A5 antibody [HL2353] (GTX638556) diluted at 1:3000. The HRP-conjugated anti-rabbit IgG antibody (GTX213110-01) was used to detect the primary antibody.


**GTX638556 WB Image**

Boiled and unboiled HeLa whole cell and membrane extracts (30 µg) were separated by 10% SDS-PAGE, and the membrane was blotted with LAT1 / SLC7A5 antibody [HL2353] (GTX638556) diluted at 1:1000. The HRP-conjugated anti-rabbit IgG antibody (GTX213110-01) was used to detect the primary antibody. (WCE: whole cell extract; ME: membrane extract)


**GTX638556 WB Image**

Various tissue extracts (50 µg) were separated by 10% SDS-PAGE, and the membrane was blotted with LAT1 / SLC7A5 antibody [HL2353] (GTX638556) diluted at 1:1000. The HRP-conjugated anti-rabbit IgG antibody (GTX213110-01) was used to detect the primary antibody.


**GTX638556 IHC-P Image**

LAT1 / SLC7A5 antibody [HL2353] detects LAT1 / SLC7A5 protein at cell membrane by immunohistochemical analysis.

Sample: Paraffin-embedded human lung cancer.

LAT1 / SLC7A5 stained by LAT1 / SLC7A5 antibody [HL2353] (GTX638556) diluted at 1:100.

Antigen Retrieval: Citrate buffer, pH 6.0, 15 min



For full product information, images and publications, please visit our [website](https://www.genetex.com).