

Calcium Sensing Receptor antibody [HL2357]

Cat. No. GTX638563

Host	Rabbit
Clonality	Monoclonal
Isotype	IgG
Applications	WB, IHC-P, IP
Reactivity	Human, Mouse, Rat, Cat

Package
100 µl, 25 µl

Applications

Application Note

*Optimal dilutions/concentrations should be determined by the researcher.

Suggested dilution	Recommended dilution
WB	1:500-1:3000
IHC-P	Assay dependent
IP	Assay dependent

Not tested in other applications.

Observed MW (kDa) > 130 (smear pattern) kDa.

Product Note This antibody was raised against human Calcium Sensing Receptor Extracellular domain.

Properties

Form	Liquid
Buffer	PBS
Preservative	No preservative
Storage	Store as concentrated solution. Centrifuge briefly prior to opening vial. For short-term storage (1-2 weeks), store at 4°C. For long-term storage, aliquot and store at -20°C or below. Avoid multiple freeze-thaw cycles.
Concentration	1 mg/ml (Please refer to the vial label for the specific concentration.)
Immunogen	Recombinant protein encompassing a sequence within the Extracellular domain of human Calcium Sensing Receptor. The exact sequence is proprietary.
Purification	Affinity purified by Protein A.
Conjugation	Unconjugated



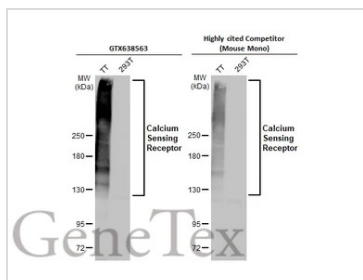
For full product information, images and publications, please visit our [website](#).

For laboratory research use only. Not for any clinical, therapeutic, or diagnostic use in humans or animals. Not for animal or human consumption.

Note

Purchasers shall not, and agree not to enable third parties to, analyze, copy, reverse engineer or otherwise attempt to determine the structure or sequence of the product.

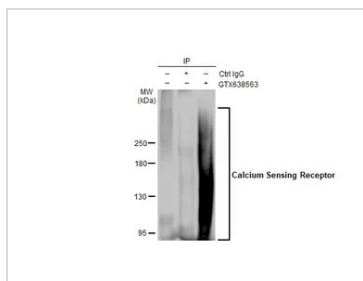
DATA IMAGES



GTX638563 WB Image

Various whole cell extracts (30 µg) were separated by 5% SDS-PAGE, and the membranes were blotted with Calcium Sensing Receptor antibody [HL2357] (GTX638563) diluted at 1:1000 and competitor's antibody (Clone 5C10, ADD) diluted at 1:1000. The HRP-conjugated anti-rabbit IgG antibody (GTX213110-01) was used to detect the primary antibody.

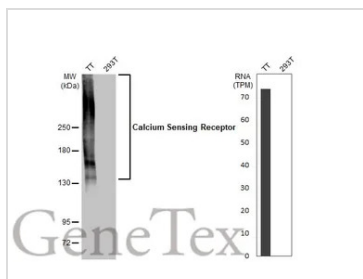
*The competitor is not affiliated with GeneTex and does not endorse this product.



GTX638563 IP Image

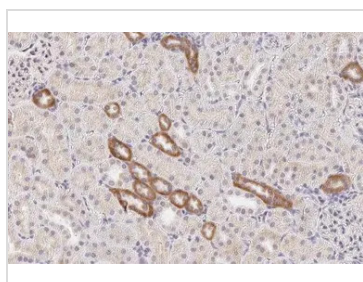
Immunoprecipitation of Calcium Sensing Receptor protein from TT whole cell extract using 5 µg of Calcium Sensing Receptor antibody [HL2357] (GTX638563).

Western blot analysis was performed using Calcium Sensing Receptor antibody [HL2357] (GTX638563). EasyBlot HRP-conjugated anti FALSE.



GTX638563 WB Image

Various whole cell extracts (30 µg) were separated by 5% SDS-PAGE, and the membrane was blotted with Calcium Sensing Receptor antibody [HL2357] (GTX638563) diluted at 1:1000. The HRP-conjugated anti-rabbit IgG antibody (GTX213110-01) was used to detect the primary antibody. Corresponding RNA expression data for the same cell lines are based on Human Protein Atlas program.



GTX638563 IHC-P Image

Calcium Sensing Receptor antibody [HL2357] detects Calcium Sensing Receptor protein at cell membrane and cytoplasm by immunohistochemical analysis.

Sample: Paraffin-embedded rat kidney.

Calcium Sensing Receptor stained by Calcium Sensing Receptor antibody [HL2357] (GTX638563) diluted at 1:400.

Antigen Retrieval: Citrate buffer, pH 6.0, 15 min



For full product information, images and publications, please visit our [website](#).