

TNF alpha antibody [HL2363]

Cat. No. GTX638569

Host	Rabbit
Clonality	Monoclonal
Isotype	IgG
Applications	ELISA, Sandwich ELISA
Reactivity	Human

Package
100 µl, 25 µl

Applications

Application Note

*Optimal dilutions/concentrations should be determined by the researcher.

Suggested dilution	Recommended dilution
ELISA	Assay dependent
Sandwich ELISA	Assay dependent

Note : Capture: GTX638569, Detection: GTX638567

Please notice that detection antibody needs to be conjugated to HRP to function when paired with capture antibody. Please contact us for custom HRP-conjugated antibody.

Not tested in other applications.

Properties

Form	Liquid
Buffer	PBS
Preservative	No preservatives
Storage	Store as concentrated solution. Centrifuge briefly prior to opening vial. For short-term storage (1-2 weeks), store at 4°C. For long-term storage, aliquot and store at -20°C or below. Avoid multiple freeze-thaw cycles.
Concentration	1 mg/ml (Please refer to the vial label for the specific concentration.)
Immunogen	Full length human TNF alpha recombinant protein.
Purification	Affinity purified by Protein A.
Conjugation	Unconjugated

Note

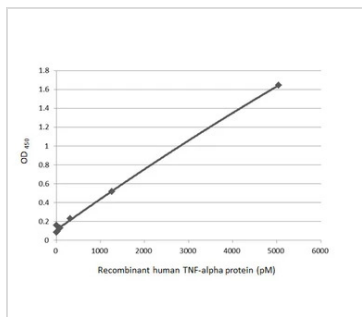
For laboratory research use only. Not for any clinical, therapeutic, or diagnostic use in humans or animals. Not for animal or human consumption.

Purchasers shall not, and agree not to enable third parties to, analyze, copy, reverse engineer or otherwise attempt to determine the structure or sequence of the product.



For full product information, images and publications, please visit our [website](#).

DATA IMAGES

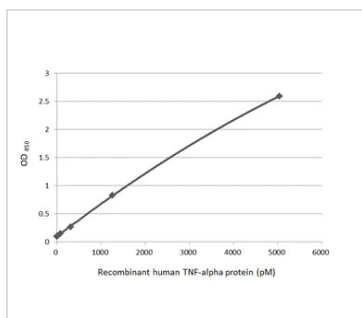
**GTX638569 ELISA Image**

Sandwich ELISA detection of recombinant 293T expressed, human Fc-tagged TNF alpha (54-233 a.a.) using antibodies as below.

Capture: TNF alpha antibody [HL2363] (GTX638569) (5 µg/mL)

Detection: HRP-conjugated TNF alpha antibody [HL2361] (GTX638567) (1 µg/mL)

Please notice that GTX638567 needs to be conjugated to HRP to function as the detection antibody when paired with GTX638569. Please contact us for custom HRP-conjugated antibody.

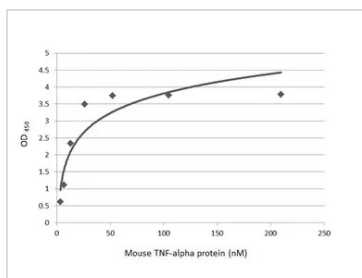
**GTX638569 ELISA Image**

Sandwich ELISA detection of recombinant 293T expressed, human Fc-tagged TNF alpha (54-233 a.a.) using antibodies as below.

Capture: TNF alpha antibody [HL2361] (GTX638567) (5 µg/mL)

Detection: HRP-conjugated TNF alpha antibody [HL2363] (GTX638569) (1 µg/mL)

Please notice that GTX638569 needs to be conjugated to HRP to function as the detection antibody when paired with GTX638567. Please contact us for custom HRP-conjugated antibody.

**GTX638569 ELISA Image**

Indirect ELISA analysis was performed by coating the plate with recombinant HEK293 expressed, mouse TNF-alpha Protein (209.42-3.27 nM). Coated protein was probed with TNF alpha antibody [HL2363] (GTX638569) (1 µg/mL). Goat anti-rabbit IgG antibody (HRP) (GTX213110-01) (1:10000) was used to detect the bound primary antibody.



For full product information, images and publications, please visit our [website](#).