

SNX5 antibody [HL2375]

Cat. No. GTX638583

Host	Rabbit
Clonality	Monoclonal
Isotype	IgG
Applications	ICC/IF, IHC-P
Reactivity	Human, Mouse, Rat

Package
100 µl, 25 µl

Applications

Application Note

*Optimal dilutions/concentrations should be determined by the researcher.

Suggested dilution	Recommended dilution
ICC/IF	1:100-1:1000
IHC-P	1:100-1:1000

Not tested in other applications.

Properties

Form	Liquid
Buffer	PBS
Preservative	No preservatives
Storage	Store as concentrated solution. Centrifuge briefly prior to opening vial. For short-term storage (1-2 weeks), store at 4°C. For long-term storage, aliquot and store at -20°C or below. Avoid multiple freeze-thaw cycles.
Concentration	1 mg/ml (Please refer to the vial label for the specific concentration.)
Immunogen	Recombinant fragment of human SNX5.
Purification	Affinity purified by Protein A.
Conjugation	Unconjugated

Note

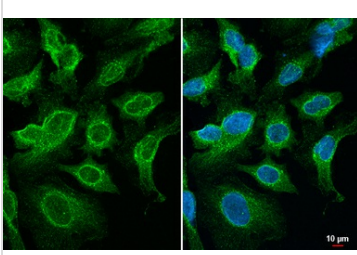
For laboratory research use only. Not for any clinical, therapeutic, or diagnostic use in humans or animals. Not for animal or human consumption.

Purchasers shall not, and agree not to enable third parties to, analyze, copy, reverse engineer or otherwise attempt to determine the structure or sequence of the product.



For full product information, images and publications, please visit our [website](#).

DATA IMAGES



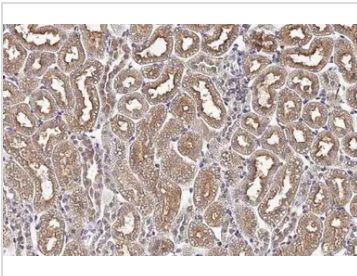
GTX638583 ICC/IF Image

SNX5 antibody [HL2375] detects SNX5 protein at cytoplasm by immunofluorescent analysis.

Sample: HeLa cells were fixed in ice-cold MeOH for 5 min.

Green: SNX5 stained by SNX5 antibody [HL2375] (GTX638583) diluted at 1:500.

Blue: Fluoroshield with DAPI (GTX30920).



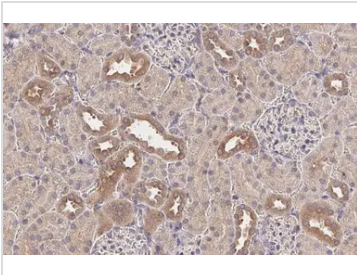
GTX638583 IHC-P Image

SNX5 antibody [HL2375] detects SNX5 protein at cell membrane and cytoplasm by immunohistochemical analysis.

Sample: Paraffin-embedded mouse kidney.

SNX5 stained by SNX5 antibody [HL2375] (GTX638583) diluted at 1:100.

Antigen Retrieval: Citrate buffer, pH 6.0, 15 min



GTX638583 IHC-P Image

SNX5 antibody [HL2375] detects SNX5 protein at cell membrane and cytoplasm by immunohistochemical analysis.

Sample: Paraffin-embedded rat kidney.

SNX5 stained by SNX5 antibody [HL2375] (GTX638583) diluted at 1:200.

Antigen Retrieval: Citrate buffer, pH 6.0, 15 min



For full product information, images and publications, please visit our [website](https://www.genetex.com).