

## SUCLG1 antibody [HL2387]

Cat. No. GTX638596

<b>Host</b>	Rabbit
<b>Clonality</b>	Monoclonal
<b>Isotype</b>	IgG
<b>Applications</b>	WB, ICC/IF, IHC-P
<b>Reactivity</b>	Human, Mouse, Rat

Package  
100 µl, 25 µl

## Applications

## Application Note

\*Optimal dilutions/concentrations should be determined by the researcher.

Suggested dilution	Recommended dilution
WB	1:500-1:3000
ICC/IF	Assay dependent
IHC-P	Assay dependent

Not tested in other applications.

**Observed MW (kDa)** 36 kDa.

## Properties

<b>Form</b>	Liquid
<b>Buffer</b>	PBS
<b>Preservative</b>	No preservatives
<b>Storage</b>	Store as concentrated solution. Centrifuge briefly prior to opening vial. For short-term storage (1-2 weeks), store at 4°C. For long-term storage, aliquot and store at -20°C or below. Avoid multiple freeze-thaw cycles.
<b>Concentration</b>	1 mg/ml (Please refer to the vial label for the specific concentration.)
<b>Immunogen</b>	Full length of human SUCLG1 protein.
<b>Purification</b>	Affinity purified by Protein A.
<b>Conjugation</b>	Unconjugated

## Note

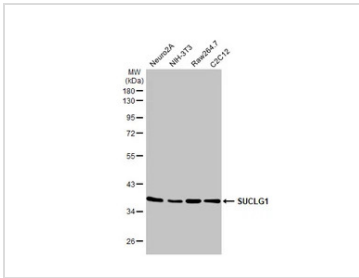
For laboratory research use only. Not for any clinical, therapeutic, or diagnostic use in humans or animals. Not for animal or human consumption.

Purchasers shall not, and agree not to enable third parties to, analyze, copy, reverse engineer or otherwise attempt to determine the structure or sequence of the product.

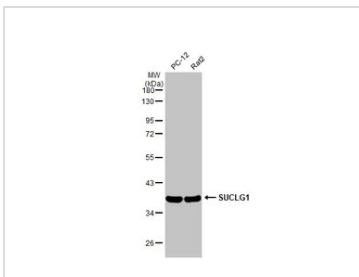


For full product information, images and publications, please visit our [website](#).

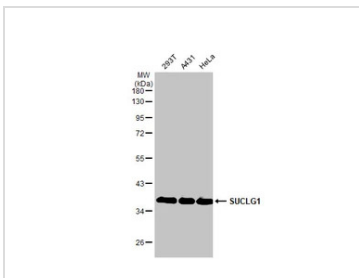
## DATA IMAGES

**GTX638596 WB Image**

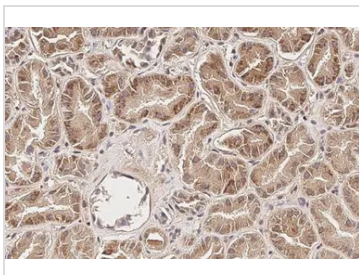
Various whole cell extracts (30 µg) were separated by 10% SDS-PAGE, and the membrane was blotted with SUCLG1 antibody [HL2387] (GTX638596) diluted at 1:1000. The HRP-conjugated anti-rabbit IgG antibody (GTX213110-01) was used to detect the primary antibody.

**GTX638596 WB Image**

Various whole cell extracts (30 µg) were separated by 10% SDS-PAGE, and the membrane was blotted with SUCLG1 antibody [HL2387] (GTX638596) diluted at 1:1000. The HRP-conjugated anti-rabbit IgG antibody (GTX213110-01) was used to detect the primary antibody.

**GTX638596 WB Image**

Various whole cell extracts (30 µg) were separated by 10% SDS-PAGE, and the membrane was blotted with SUCLG1 antibody [HL2387] (GTX638596) diluted at 1:1000. The HRP-conjugated anti-rabbit IgG antibody (GTX213110-01) was used to detect the primary antibody.

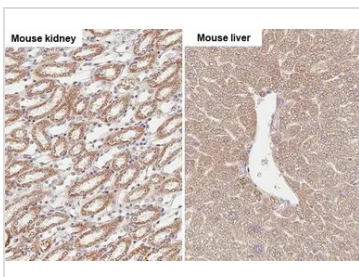
**GTX638596 IHC-P Image**

SUCLG1 antibody [HL2387] detects SUCLG1 protein at mitochondria by immunohistochemical analysis.

Sample: Paraffin-embedded human kidney.

SUCLG1 stained by SUCLG1 antibody [HL2387] (GTX638596) diluted at 1:100.

Antigen Retrieval: Citrate buffer, pH 6.0, 15 min

**GTX638596 IHC-P Image**

SUCLG1 antibody [HL2387] detects SUCLG1 protein at mitochondria by immunohistochemical analysis.

Sample: Paraffin-embedded mouse tissue.

SUCLG1 stained by SUCLG1 antibody [HL2387] (GTX638596) diluted at 1:100.

Antigen Retrieval: Citrate buffer, pH 6.0, 15 min



For full product information, images and publications, please visit our [website](http://www.genetex.com).