

SARS-CoV-2 (COVID-19) nsp11 antibody [HL2388]

Cat. No. GTX638597

Host	Rabbit
Clonality	Monoclonal
Isotype	IgG
Applications	WB, ICC/IF
Reactivity	SARS Coronavirus 2

Package
100 µl, 25 µl

Applications

Application Note

*Optimal dilutions/concentrations should be determined by the researcher.

Suggested dilution	Recommended dilution
WB	Assay dependent
ICC/IF	1:100-1:1000

Not tested in other applications.

Properties

Form	Liquid
Buffer	PBS
Preservative	No preservatives
Storage	Store as concentrated solution. Centrifuge briefly prior to opening vial. For short-term storage (1-2 weeks), store at 4°C. For long-term storage, aliquot and store at -20°C or below. Avoid multiple freeze-thaw cycles.
Concentration	1 mg/ml (Please refer to the vial label for the specific concentration.)
Immunogen	Full length of SARS-CoV-2 (COVID-19) nsp11 protein. (Strain: Wuhan-Hu-1)
Purification	Affinity purified by Protein A.
Conjugation	Unconjugated

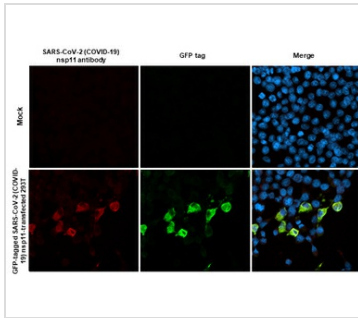
Note

For laboratory research use only. Not for any clinical, therapeutic, or diagnostic use in humans or animals. Not for animal or human consumption.

Purchasers shall not, and agree not to enable third parties to, analyze, copy, reverse engineer or otherwise attempt to determine the structure or sequence of the product.



For full product information, images and publications, please visit our [website](https://www.genetex.com).

DATA IMAGES

GTx638597 ICC/IF Image

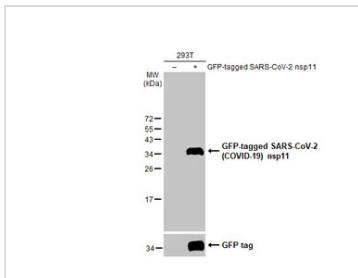
SARS-CoV-2 (COVID-19) nsp11 antibody detects SARS-CoV-2 (COVID-19) nsp11 protein by immunofluorescent analysis.

Sample: Mock and transfected 293T cells were fixed in ice-cold MeOH for 5 min.

Green: GFP tagged protein is expressed in the transfected cells.

Red: SARS-CoV-2 (COVID-19) nsp11 stained by SARS-CoV-2 (COVID-19) nsp11 antibody (GTx638597) diluted at 1:500.

Blue: Fluoroshield with DAPI (GTx30920).


GTx638597 WB Image

Non-transfected (–) and transfected (+) 293T whole cell extracts (30 µg) were separated by 15% SDS-PAGE, and the membrane was blotted with SARS-CoV-2 (COVID-19) nsp11 antibody (GTx638597) diluted at 1:5000. The HRP-conjugated anti-rabbit IgG antibody (GTx213110-01) was used to detect the primary antibody.



For full product information, images and publications, please visit our [website](https://www.genetex.com).