

# IL6 antibody [HL2389]

**Cat. No. GTX638598**

<b>Host</b>	Rabbit
<b>Clonality</b>	Monoclonal
<b>Isotype</b>	IgG
<b>Applications</b>	WB, ICC/IF, ELISA, Sandwich ELISA
<b>Reactivity</b>	Human

**Package**  
100 µl, 25 µl

## Applications

### Application Note

\*Optimal dilutions/concentrations should be determined by the researcher.

Suggested dilution	Recommended dilution
WB	1:500-1:3000
ICC/IF	Assay dependent
ELISA	Assay dependent
Sandwich ELISA	Assay dependent

**Note : Capture : GTX636571 / GTX636573, Detection : GTX638598**

Not tested in other applications.

**Observed MW (kDa)** 24 kDa.

## Properties

<b>Form</b>	Liquid
<b>Buffer</b>	PBS
<b>Preservative</b>	No preservatives
<b>Storage</b>	Store as concentrated solution. Centrifuge briefly prior to opening vial. For short-term storage (1-2 weeks), store at 4°C. For long-term storage, aliquot and store at -20°C or below. Avoid multiple freeze-thaw cycles.
<b>Concentration</b>	1 mg/ml (Please refer to the vial label for the specific concentration.)
<b>Immunogen</b>	Recombinant fragment of human IL6.
<b>Purification</b>	Affinity purified by Protein A.
<b>Conjugation</b>	Unconjugated



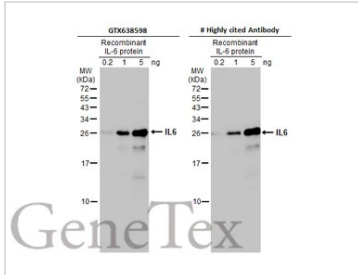
For full product information, images and publications, please visit our [website](#).

For laboratory research use only. Not for any clinical, therapeutic, or diagnostic use in humans or animals. Not for animal or human consumption.

**Note**

Purchasers shall not, and agree not to enable third parties to, analyze, copy, reverse engineer or otherwise attempt to determine the structure or sequence of the product.

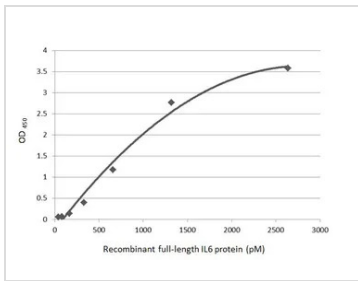
## DATA IMAGES



### GTX638598 WB Image

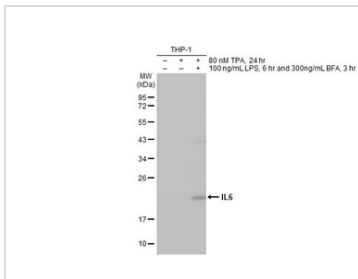
Recombinant IL6 were separated by 15% SDS-PAGE, and the membranes were blotted with IL6 antibody [HL2389] (GTX638598) diluted at 1:1000 and competitor's antibody diluted at 1:1000. The HRP-conjugated anti-rabbit IgG antibody (GTX213110-01) was used to detect the primary antibody.

\*The competitor is not affiliated with GeneTex and does not endorse this product.



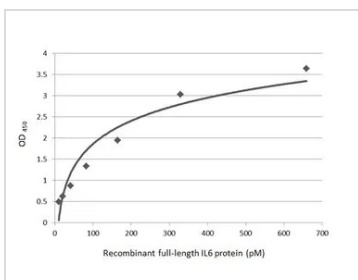
### GTX638598 ELISA Image

Indirect ELISA analysis was performed by coating the plate with recombinant Human IL6 protein, His tag (GTX135982-pro) (2634.91-41.32 pM). Coated protein was probed with IL6 antibody [HL2389] (GTX638598) (1 µg/mL). Goat anti-rabbit IgG antibody (HRP) (GTX213110-01) (1:10000) was used to detect the bound primary antibody.



### GTX638598 WB Image

Untreated (-) and treated (+) THP-1 whole cell extracts (30 µg) were separated by 12% SDS-PAGE, and the membrane was blotted with IL6 antibody [HL2389] (GTX638598) diluted at 1:1000. The HRP-conjugated anti-rabbit IgG antibody (GTX213110-01) was used to detect the primary antibody, and the signal was developed with Trident ECL plus-Enhanced.



### GTX638598 ELISA Image

Sandwich ELISA detection of recombinant Human IL6 protein, His tag (GTX135982-pro) using antibodies as below.

**Capture:** IL6 antibody [GT1535] (GTX636571) (5 µg/mL)

**Detection:** IL6 antibody [HL2389] (GTX638598) (1 µg/mL)



For full product information, images and publications, please visit our [website](https://www.genetex.com).