

## Yellow Fever virus Envelope Protein antibody [HL2409]

Cat. No. GTX638626

Host	Rabbit
Clonality	Monoclonal
Isotype	IgG
Applications	WB
Reactivity	Yellow Fever virus

Package  
100 µl, 25 µl

## Applications

## Application Note

\*Optimal dilutions/concentrations should be determined by the researcher.

Suggested dilution	Recommended dilution
WB	1:500-1:3000

Not tested in other applications.

**Product Note** This antibody is specific for Yellow Fever virus Envelope protein, and it does not cross-react with DENV-2 Envelope protein.

## Properties

Form	Liquid
Buffer	PBS
Preservative	No preservatives
Storage	Store as concentrated solution. Centrifuge briefly prior to opening vial. For short-term storage (1-2 weeks), store at 4°C. For long-term storage, aliquot and store at -20°C or below. Avoid multiple freeze-thaw cycles.
Concentration	1 mg/ml (Please refer to the vial label for the specific concentration.)
Immunogen	Recombinant fragment of Yellow Fever virus Envelope Protein. (strain 17D vaccine)
Purification	Affinity purified by Protein A.
Conjugation	Unconjugated

## Note

For laboratory research use only. Not for any clinical, therapeutic, or diagnostic use in humans or animals. Not for animal or human consumption.

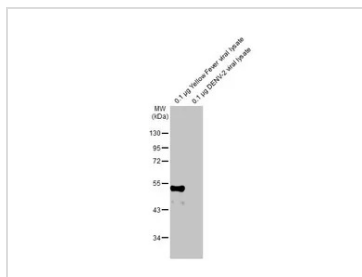
Purchasers shall not, and agree not to enable third parties to, analyze, copy, reverse engineer or otherwise attempt to determine the structure or sequence of the product.



For full product information, images and publications, please visit our [website](#).

Date 2026 / 01 / 08 Page 1 of 2

## DATA IMAGES



### GTX638626 WB Image

Various viral lysates (0.1 µg) were separated by 10% SDS-PAGE, and the membrane was blotted with Yellow Fever virus Envelope Protein antibody [HL2409] (GTX638626) diluted at 1:1000. The HRP-conjugated anti-rabbit IgG antibody (GTX213110-01) was used to detect the primary antibody.



For full product information, images and publications, please visit our [website](https://www.genetex.com).