

Collagen I + Collagen II + Collagen III antibody [HL2048 + HL1907]

Cat. No. GTX638633

Host	Rabbit
Clonality	Multiclonal
Isotype	IgG
Applications	WB, IHC-P
Reactivity	Human, Mouse, Rat

Package

100 µl, 25 µl

Applications

Application Note

*Optimal dilutions/concentrations should be determined by the researcher.

Suggested dilution	Recommended dilution
WB	1:500-1:3000
IHC-P	Assay dependent

Not tested in other applications.

Observed MW (kDa) 150-200 kDa.

Properties

Form	Liquid
Buffer	PBS
Preservative	No preservative
Storage	Store as concentrated solution. Centrifuge briefly prior to opening vial. For short-term storage (1-2 weeks), store at 4°C. For long-term storage, aliquot and store at -20°C or below. Avoid multiple freeze-thaw cycles.
Concentration	1 mg/ml (Please refer to the vial label for the specific concentration.)
Immunogen	Recombinant fragment of human Collagen I + Collagen II + Collagen III.
Purification	Affinity purified by Protein A.
Conjugation	Unconjugated

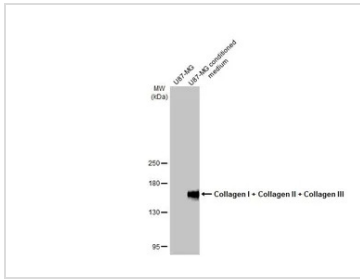
Note

For laboratory research use only. Not for any clinical, therapeutic, or diagnostic use in humans or animals. Not for animal or human consumption.

Purchasers shall not, and agree not to enable third parties to, analyze, copy, reverse engineer or otherwise attempt to determine the structure or sequence of the product.

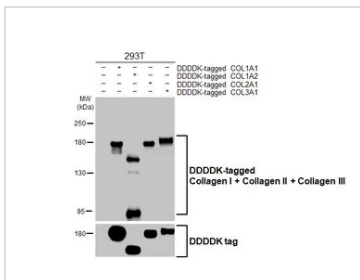
For full product information, images and publications, please visit our [website](#).

DATA IMAGES



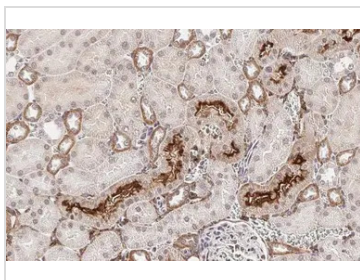
GTX638633 WB Image

U87-MG whole cell extract and conditioned medium (30 µg) were separated by 5% SDS-PAGE, and the membrane was blotted with Collagen I + Collagen II + Collagen III antibody [HL2048 + HL1907] (GTX638633) diluted at 1:2000. The HRP-conjugated anti-rabbit IgG antibody (GTX213110-01) was used to detect the primary antibody.



GTX638633 WB Image

Non-transfected (-) and transfected (+) 293T whole cell extracts were separated by 5% SDS-PAGE, and the membrane was blotted with Collagen I + Collagen II + Collagen III antibody [HL2048 + HL1907] (GTX638633) diluted at 1:2000. The HRP-conjugated anti-rabbit IgG antibody (GTX213110-01) was used to detect the primary antibody.



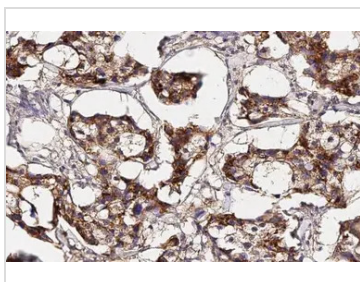
GTX638633 IHC-P Image

Collagen I + Collagen II + Collagen III antibody [HL2048 + HL1907] detects secreted Collagen I + Collagen II + Collagen III protein by immunohistochemical analysis.
 Sample: Paraffin-embedded rat kidney.
 Collagen I + Collagen II + Collagen III stained by Collagen I + Collagen II + Collagen III antibody [HL2048 + HL1907] (GTX638633) diluted at 1:100.
 Antigen Retrieval: Citrate buffer, pH 6.0, 15 min



GTX638633 IHC-P Image

Collagen I + Collagen II + Collagen III antibody [HL2048 + HL1907] detects secreted Collagen I + Collagen II + Collagen III protein by immunohistochemical analysis.
 Sample: Paraffin-embedded mouse testis.
 Collagen I + Collagen II + Collagen III stained by Collagen I + Collagen II + Collagen III antibody [HL2048 + HL1907] (GTX638633) diluted at 1:100.
 Antigen Retrieval: Citrate buffer, pH 6.0, 15 min



GTX638633 IHC-P Image

Collagen I + Collagen II + Collagen III antibody [HL2048 + HL1907] detects secreted Collagen I + Collagen II + Collagen III protein by immunohistochemical analysis.
 Sample: Paraffin-embedded human breast carcinoma.
 Collagen I + Collagen II + Collagen III stained by Collagen I + Collagen II + Collagen III antibody [HL2048 + HL1907] (GTX638633) diluted at 1:100.
 Antigen Retrieval: Citrate buffer, pH 6.0, 15 min



For full product information, images and publications, please visit our [website](#).