

TMEM119 antibody [HL2415]

Cat. No. GTX638642

Host	Rabbit
Clonality	Monoclonal
Isotype	IgG
Applications	IHC-P
Reactivity	Mouse, Rat

Package
100 µl, 25 µl

Applications

Application Note

*Optimal dilutions/concentrations should be determined by the researcher.

Suggested dilution	Recommended dilution
IHC-P	1:100-1:1000

Not tested in other applications.

Product Note This antibody was raised against mouse TMEM119 Extracellular domain.

Properties

Form	Liquid
Buffer	PBS
Preservative	No preservatives
Storage	Store as concentrated solution. Centrifuge briefly prior to opening vial. For short-term storage (1-2 weeks), store at 4°C. For long-term storage, aliquot and store at -20°C or below. Avoid multiple freeze-thaw cycles.
Concentration	1 mg/ml (Please refer to the vial label for the specific concentration.)
Immunogen	Recombinant protein encompassing a sequence within the Extracellular domain of mouse TMEM119. The exact sequence is proprietary.
Purification	Affinity purified by Protein A.
Conjugation	Unconjugated

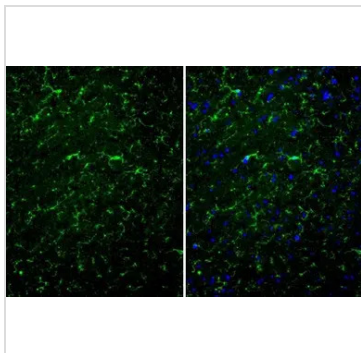
Note

For laboratory research use only. Not for any clinical, therapeutic, or diagnostic use in humans or animals. Not for animal or human consumption.

Purchasers shall not, and agree not to enable third parties to, analyze, copy, reverse engineer or otherwise attempt to determine the structure or sequence of the product.



For full product information, images and publications, please visit our [website](#).

DATA IMAGES

GTX638642 IHC-P Image

TMEM119 antibody [HL2415] detects TMEM119 protein at cell membrane and cytoplasm by immunohistochemical analysis.

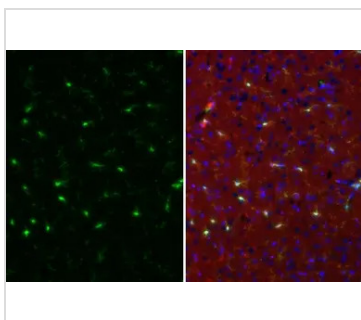
Sample: Paraffin-embedded mouse brain.

Green: TMEM119 stained by TMEM119 antibody [HL2415] (GTX638642) diluted at 1:100.

Red: beta Tubulin 3/ Tuj1 , a Cytoskeleton marker, stained by beta Tubulin 3/ Tuj1 antibody [GT11710] (GTX631836) diluted at 1:500.

Blue: Fluoroshield with DAPI (GTX30920).

Antigen Retrieval: Citrate buffer, pH 6.0, 15 min


GTX638642 IHC-P Image

TMEM119 antibody [HL2415] detects TMEM119 protein by immunohistochemical analysis.

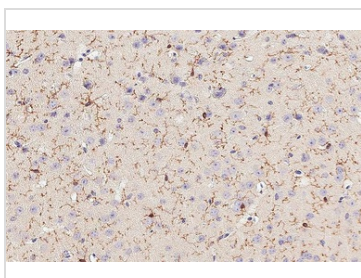
Sample: Paraffin-embedded rat brain.

Green: TMEM119 stained by TMEM119 antibody [HL2415] (GTX638642) diluted at 1:250.

Red: Iba1, a cell membrane and cytoplasm marker, stained by Iba1 antibody [HL1880-MS] (GTX638147) diluted at 1:250.

Blue: Hoechst 33342 staining.

Antigen Retrieval: Citrate buffer, pH 6.0, 15 min


GTX638642 IHC-P Image

TMEM119 antibody [HL2415] detects TMEM119 protein by immunohistochemical analysis.

Sample: Paraffin-embedded mouse brain.

TMEM119 stained by TMEM119 antibody [HL2415] (GTX638642) diluted at 1:100.

Antigen Retrieval: Citrate buffer, pH 6.0, 15 min



For full product information, images and publications, please visit our [website](https://www.genetex.com).