

Wnt9a antibody [HL2422]

Cat. No. GTX638644

Host	Rabbit
Clonality	Monoclonal
Isotype	IgG
Applications	WB, ICC/IF, IHC-P
Reactivity	Human, Mouse, Rat

Package
100 µl, 25 µl

Applications

Application Note

*Optimal dilutions/concentrations should be determined by the researcher.

Suggested dilution	Recommended dilution
WB	Assay dependent
ICC/IF	Assay dependent
IHC-P	1:100-1:1000

Not tested in other applications.

Observed MW (kDa) 43 kDa.

Properties

Form	Liquid
Buffer	PBS
Preservative	No preservatives
Storage	Store as concentrated solution. Centrifuge briefly prior to opening vial. For short-term storage (1-2 weeks), store at 4°C. For long-term storage, aliquot and store at -20°C or below. Avoid multiple freeze-thaw cycles.
Concentration	1 mg/ml (Please refer to the vial label for the specific concentration.)
Immunogen	Synthetic peptide of human Wnt9a.
Purification	Affinity purified by Protein A.
Conjugation	Unconjugated

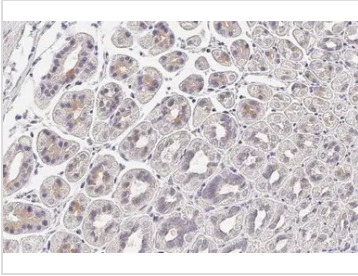
Note

For laboratory research use only. Not for any clinical, therapeutic, or diagnostic use in humans or animals. Not for animal or human consumption.

Purchasers shall not, and agree not to enable third parties to, analyze, copy, reverse engineer or otherwise attempt to determine the structure or sequence of the product.



For full product information, images and publications, please visit our [website](#).

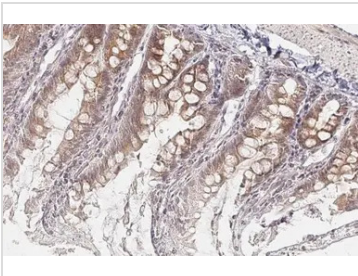
DATA IMAGES

GTX638644 IHC-P Image

Wnt9a antibody [HL2422] detects secreted Wnt9a protein by immunohistochemical analysis.

Sample: Paraffin-embedded mouse stomach.

Wnt9a stained by Wnt9a antibody [HL2422] (GTX638644) diluted at 1:100.

Antigen Retrieval: Citrate buffer, pH 6.0, 15 min

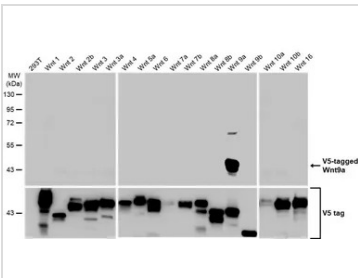

GTX638644 IHC-P Image

Wnt9a antibody [HL2422] detects secreted Wnt9a protein by immunohistochemical analysis.

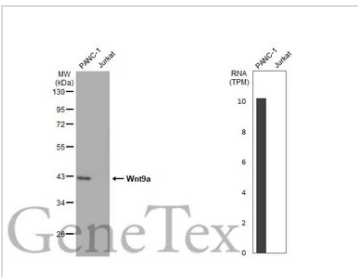
Sample: Paraffin-embedded rat intestine.

Wnt9a stained by Wnt9a antibody [HL2422] (GTX638644) diluted at 1:100.

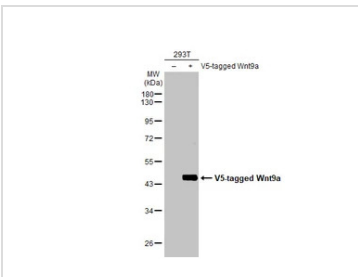
Antigen Retrieval: Citrate buffer, pH 6.0, 15 min


GTX638644 WB Image

Non-transfected (–) and transfected (+) 293T whole cell extracts were separated by 10% SDS-PAGE, and the membrane was blotted with Wnt9a antibody [HL2422] (GTX638644) diluted at 1:5000. The HRP-conjugated anti-rabbit IgG antibody (GTX213110-01) was used to detect the primary antibody.


GTX638644 WB Image

Various whole cell extracts (50 µg) were separated by 10% SDS-PAGE, and the membrane was blotted with Wnt9a antibody [HL2422] (GTX638644) diluted at 1:1000. The HRP-conjugated anti-rabbit IgG antibody (GTX213110-01) was used to detect the primary antibody, and the signal was developed with Trident ECL plus-Enhanced. Corresponding RNA expression data for the same cell lines are based on Human Protein Atlas program.


GTX638644 WB Image

Non-transfected (–) and transfected (+) 293T whole cell extracts (30 µg) were separated by 10% SDS-PAGE, and the membrane was blotted with Wnt9a antibody [HL2422] (GTX638644) diluted at 1:5000. The HRP-conjugated anti-rabbit IgG antibody (GTX213110-01) was used to detect the primary antibody.



For full product information, images and publications, please visit our [website](https://www.genetex.com).