

Adenosine A1 Receptor antibody [HL2442]

Cat. No. GTX638758

Host	Rabbit
Clonality	Monoclonal
Isotype	IgG
Applications	WB, IHC-P
Reactivity	Human, Mouse, Rat, Dog

Package
100 µl, 25 µl

Applications

Application Note

*Optimal dilutions/concentrations should be determined by the researcher.

Suggested dilution	Recommended dilution
WB	1:500-1:3000
IHC-P	Assay dependent

Not tested in other applications.

Observed MW (kDa) 37 kDa.**Product Note** This antibody was raised against human Adenosine A1 Receptor Intracellular domain.

Properties

Form	Liquid
Buffer	PBS
Preservative	No preservatives
Storage	Store as concentrated solution. Centrifuge briefly prior to opening vial. For short-term storage (1-2 weeks), store at 4°C. For long-term storage, aliquot and store at -20°C or below. Avoid multiple freeze-thaw cycles.
Concentration	1 mg/ml (Please refer to the vial label for the specific concentration.)
Immunogen	Synthetic peptide encompassing a sequence within the Intracellular domain of human Adenosine A1 Receptor. The exact sequence is proprietary.
Purification	Affinity purified by Protein A.
Conjugation	Unconjugated

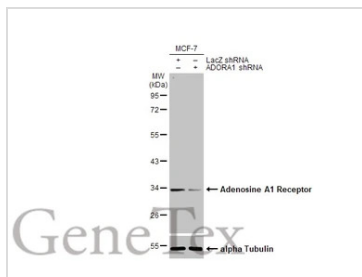
Note

For laboratory research use only. Not for any clinical, therapeutic, or diagnostic use in humans or animals. Not for animal or human consumption.

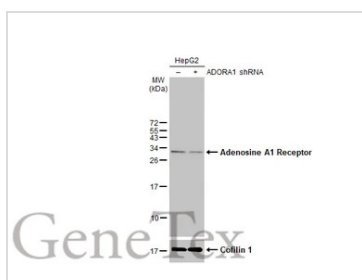
Purchasers shall not, and agree not to enable third parties to, analyze, copy, reverse engineer or otherwise attempt to determine the structure or sequence of the product.



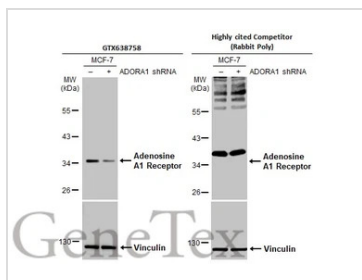
For full product information, images and publications, please visit our [website](#).

DATA IMAGES

GTX638758 WB Image

Non-transfected (–) and transfected (+) MCF-7 whole cell extract (30 µg) were separated by 10% SDS-PAGE, and the membrane was blotted with Adenosine A1 Receptor antibody [HL2442] (GTX638758) diluted at 1:1000. The HRP-conjugated anti-rabbit IgG antibody (GTX213110-01) was used to detect the primary antibody.

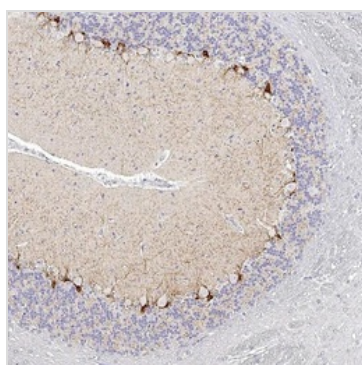

GTX638758 WB Image

Non-transfected (–) and transfected (+) HepG2 whole cell extracts (30 µg) were separated by 15% SDS-PAGE, and the membrane was blotted with Adenosine A1 Receptor antibody [HL2442] (GTX638758) diluted at 1:3000. The HRP-conjugated anti-rabbit IgG antibody (GTX213110-01) was used to detect the primary antibody.


GTX638758 WB Image

Non-transfected (–) and transfected (+) MCF-7 whole cell extracts (30 µg) were separated by 10% SDS-PAGE, and the membranes were blotted with Adenosine A1 Receptor antibody [HL2442] (GTX638758) diluted at 1:1000 and competitor's antibody (competitor) diluted at 1:1000. The HRP-conjugated anti-rabbit IgG antibody (GTX213110-01) was used to detect the primary antibody.

*The competitor is not affiliated with GeneTex and does not endorse this product.


GTX638758 IHC-P Image

Adenosine A1 Receptor antibody [HL2442] detects Adenosine A1 Receptor protein by immunohistochemical analysis.

Sample: Paraffin-embedded rat cerebellum.

Adenosine A1 Receptor stained by Adenosine A1 Receptor antibody [HL2442] (GTX638758) diluted at 1:400.

Antigen Retrieval: Citrate buffer, pH 6.0, 15 min



For full product information, images and publications, please visit our [website](https://www.genetex.com).