

Vasa antibody [HL2485]

Cat. No. GTX638835

Host	Rabbit
Clonality	Monoclonal
Isotype	IgG
Applications	WB, IHC-Wm
Reactivity	Mouse, Rat, Zebrafish

References (1)

Package

100 µl, 25 µl

Applications

Application Note

*Optimal dilutions/concentrations should be determined by the researcher.

Suggested dilution	Recommended dilution
WB	1:500-1:3000
IHC-Wm	1:100-1:500

Not tested in other applications.

Observed MW (kDa) 77 kDa.

Properties

Form	Liquid
Buffer	PBS
Preservative	No preservatives
Storage	Store as concentrated solution. Centrifuge briefly prior to opening vial. For short-term storage (1-2 weeks), store at 4°C. For long-term storage, aliquot and store at -20°C or below. Avoid multiple freeze-thaw cycles.
Concentration	1 mg/ml (Please refer to the vial label for the specific concentration.)
Immunogen	Recombinant fragment of zebrafish Vasa
Purification	Affinity purified by Protein A.
Conjugation	Unconjugated

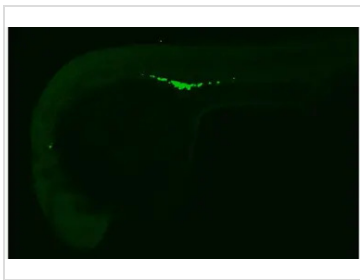
Note

For laboratory research use only. Not for any clinical, therapeutic, or diagnostic use in humans or animals. Not for animal or human consumption.

Purchasers shall not, and agree not to enable third parties to, analyze, copy, reverse engineer or otherwise attempt to determine the structure or sequence of the product.

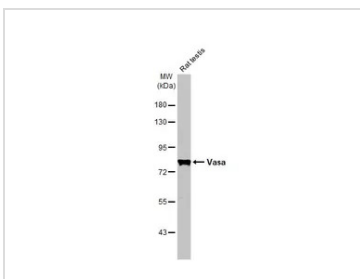
For full product information, images and publications, please visit our [website](#).

DATA IMAGES



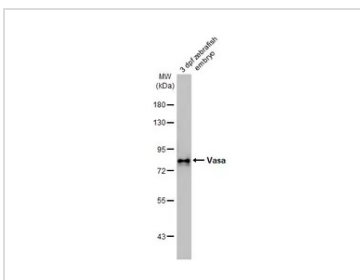
GTX638835 IHC-Wm Image

Vasa antibody [HL2485] detects Vasa protein on whole mount zebrafish by immunohistochemical analysis.
 Sample: Paraformaldehyde-fixed 1 day-post-fertilization zebrafish embryo.
 Green: Vasa stained by Vasa antibody [HL2485] (GTX638835) diluted at 1:100.
 Antigen Retrieval: Tris-HCl buffer, pH 9.0, 20 min at 70°C



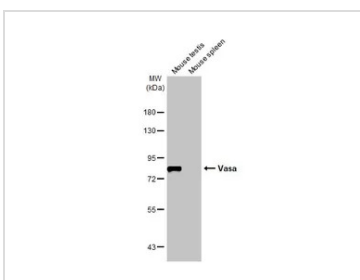
GTX638835 WB Image

Rat tissue extract (50 µg) was separated by 7.5% SDS-PAGE, and the membrane was blotted with Vasa antibody [HL2485] (GTX638835) diluted at 1:1000. The HRP-conjugated anti-rabbit IgG antibody (GTX213110-01) was used to detect the primary antibody.



GTX638835 WB Image

Zebrafish embryo extracts (30 µg) was separated by 7.5% SDS-PAGE, and the membrane was blotted with Vasa antibody [HL2485] (GTX638835) diluted at 1:1000. The HRP-conjugated anti-rabbit IgG antibody (GTX213110-01) was used to detect the primary antibody.



GTX638835 WB Image

Various tissue extracts (50 µg) were separated by 7.5% SDS-PAGE, and the membrane was blotted with Vasa antibody [HL2485] (GTX638835) diluted at 1:1000. The HRP-conjugated anti-rabbit IgG antibody (GTX213110-01) was used to detect the primary antibody.



For full product information, images and publications, please visit our [website](#).