

Tau (phospho Thr181) antibody [HL2498]

Cat. No. GTX638856

Host	Rabbit
Clonality	Monoclonal
Isotype	IgG
Applications	WB, IHC-P, ELISA, Sandwich ELISA
Reactivity	Human, Mouse

Package
100 µl, 25 µl

Applications

Application Note

*Optimal dilutions/concentrations should be determined by the researcher.

Suggested dilution	Recommended dilution
WB	1:500-1:3000
IHC-P	Assay dependent
ELISA	Assay dependent
Sandwich ELISA	Assay dependent

Note : Capture : GTX638855, Detection : GTX638856 or Capture : GTX638856, Detection : GTX638855
The detection antibody requires HRP conjugation. Please contact us for the conjugation service.

Not tested in other applications.

Observed MW (kDa) 50-80 kDa.

Properties

Form	Liquid
Buffer	PBS
Preservative	No preservatives
Storage	Store as concentrated solution. Centrifuge briefly prior to opening vial. For short-term storage (1-2 weeks), store at 4°C. For long-term storage, aliquot and store at -20°C or below. Avoid multiple freeze-thaw cycles.
Concentration	1 mg/ml (Please refer to the vial label for the specific concentration.)
Immunogen	Carrier-protein conjugated synthetic peptide surrounding phospho Thr181 of human Tau. The exact sequence is proprietary.
Purification	Affinity purified by Protein A.
Conjugation	Unconjugated



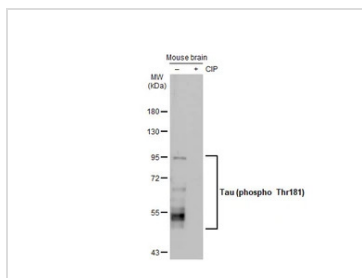
For full product information, images and publications, please visit our [website](#).

For laboratory research use only. Not for any clinical, therapeutic, or diagnostic use in humans or animals. Not for animal or human consumption.

Note

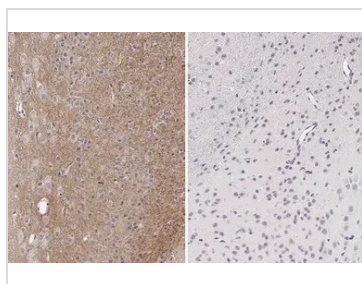
Purchasers shall not, and agree not to enable third parties to, analyze, copy, reverse engineer or otherwise attempt to determine the structure or sequence of the product.

DATA IMAGES



GTX638856 WB Image

Untreated (–) and treated (+) Mouse tissue extract (50 µg) were separated by 7.5% SDS-PAGE, and the membrane was blotted with Tau (phospho Thr181) antibody [HL2498] (GTX638856) diluted at 1:1000. The HRP-conjugated anti-rabbit IgG antibody (GTX213110-01) was used to detect the primary antibody.



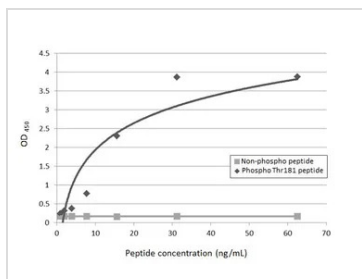
GTX638856 IHC-P Image

Tau (phospho Thr181) antibody [HL2498] detects Tau (phospho Thr181) protein in the cytoplasm by immunohistochemical analysis in the presence of non phospho control peptide (left) but not in the presence of the antigenic phospho peptide (right).

Sample: Paraffin-embedded mouse brain.

Tau (phospho Thr181) stained by Tau (phospho Thr181) antibody [HL2498] (GTX638856) diluted at 1:100.

Antigen Retrieval: Citrate buffer, pH 6.0, 15 min



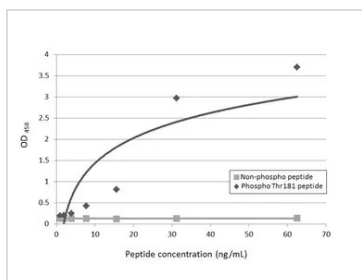
GTX638856 ELISA Image

Sandwich ELISA detection of Tau peptide and Tau (phospho Thr181) peptide using antibodies as below.

Capture: Tau (phospho Thr181) antibody [HL2497] (GTX638855) (5 µg/mL)

Detection: HRP-conjugated Tau (phospho Thr181) antibody [HL2498] (GTX638856) (1 µg/mL)

Please notice that GTX638856 needs to be conjugated to HRP to function as the detection antibody when paired with GTX638855. Please contact us for custom HRP-conjugated antibody.



GTX638856 ELISA Image

Sandwich ELISA detection of Tau peptide and Tau (phospho Thr181) peptide using antibodies as below.

Capture: Tau (phospho Thr181) antibody [HL2498] (GTX638856) (5 µg/mL)

Detection: HRP-conjugated Tau (phospho Thr181) antibody [HL2497] (GTX638855) (1 µg/mL)

Please notice that GTX638855 needs to be conjugated to HRP to function as the detection antibody when paired with GTX638856. Please contact us for custom HRP-conjugated antibody.



For full product information, images and publications, please visit our [website](https://www.genetex.com).