

# Dengue virus NS2B protein antibody [HL2513]

**Cat. No. GTX638874**

<b>Host</b>	Rabbit
<b>Clonality</b>	Monoclonal
<b>Isotype</b>	IgG
<b>Applications</b>	WB, ICC/IF
<b>Reactivity</b>	Dengue virus 1, Dengue virus 2, Dengue virus 3, Dengue virus 4

**Package**  
100 µl, 25 µl

## Applications

### Application Note

\*Optimal dilutions/concentrations should be determined by the researcher.

Suggested dilution	Recommended dilution
WB	1:500-1:3000
ICC/IF	Assay dependent

Not tested in other applications.

### Product Note

The validated Dengue virus serotype for each application may differ. Please refer to the validated data. This antibody does not cross-react with Zika and CHIKV Envelope protein.

## Properties

<b>Form</b>	Liquid
<b>Buffer</b>	PBS
<b>Preservative</b>	No preservative
<b>Storage</b>	Store as concentrated solution. Centrifuge briefly prior to opening vial. For short-term storage (1-2 weeks), store at 4°C. For long-term storage, aliquot and store at -20°C or below. Avoid multiple freeze-thaw cycles.
<b>Concentration</b>	1 mg/ml (Please refer to the vial label for the specific concentration.)
<b>Immunogen</b>	Full length of Dengue virus NS2B protein. (strain Thailand/16681/1984)
<b>Purification</b>	Affinity purified by Protein A.
<b>Conjugation</b>	Unconjugated

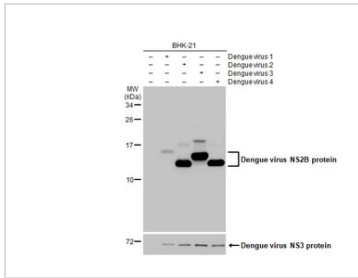
### Note

For laboratory research use only. Not for any clinical, therapeutic, or diagnostic use in humans or animals. Not for animal or human consumption.

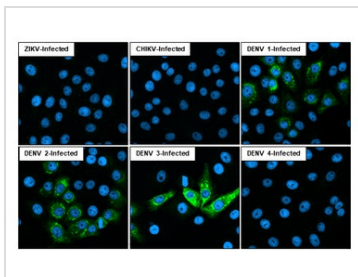
Purchasers shall not, and agree not to enable third parties to, analyze, copy, reverse engineer or otherwise attempt to determine the structure or sequence of the product.



For full product information, images and publications, please visit our [website](#).

**DATA IMAGES**

**GTX638874 WB Image**

Non-infected (–) and infected (+) BHK-21 whole cell extracts (5 µg) were separated by 15% SDS-PAGE, and the membrane was blotted with Dengue virus NS2B protein antibody [HL2513] (GTX638874) diluted at 1:1000. The HRP-conjugated anti-rabbit IgG antibody (GTX213110-01) was used to detect the primary antibody.


**GTX638874 ICC/IF Image**

Immunofluorescent analysis of Dengue virus infected cells using Dengue virus NS2B protein antibody [HL2513] antibody (GTX638874).

Sample: Multiple virus infected cells slide.

Green: Dengue virus NS2B protein antibody [HL2513] antibody (GTX638874) diluted at 1:100.

Blue: Fluoroshield with DAPI (GTX30920).



For full product information, images and publications, please visit our [website](https://www.genetex.com).