

Japanese encephalitis virus Envelope antibody [HL2517]

Cat. No. GTX638878

Host	Rabbit
Clonality	Monoclonal
Isotype	IgG
Applications	WB, ICC/IF
Reactivity	Japanese encephalitis virus

Package
100 µl, 25 µl

Applications

Application Note

*Optimal dilutions/concentrations should be determined by the researcher.

Suggested dilution	Recommended dilution
WB	1:500-1:3000
ICC/IF	Assay dependent

Not tested in other applications.

Product Note

This antibody is specific for JEV Envelope protein, and it does not cross-react with Zika, DENV-1, DENV-2, DENV-3, and DENV-4 Envelope protein.

Properties

Form	Liquid
Buffer	PBS
Preservative	No preservatives
Storage	Store as concentrated solution. Centrifuge briefly prior to opening vial. For short-term storage (1-2 weeks), store at 4°C. For long-term storage, aliquot and store at -20°C or below. Avoid multiple freeze-thaw cycles.
Concentration	1 mg/ml (Please refer to the vial label for the specific concentration.)
Immunogen	Recombinant fragment of Japanese encephalitis virus Envelope. (strain: Jaoars982)
Purification	Affinity purified by Protein A.
Conjugation	Unconjugated

Note

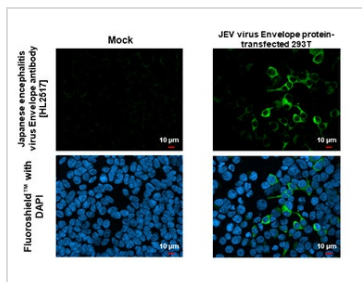
For laboratory research use only. Not for any clinical, therapeutic, or diagnostic use in humans or animals. Not for animal or human consumption.

Purchasers shall not, and agree not to enable third parties to, analyze, copy, reverse engineer or otherwise attempt to determine the structure or sequence of the product.



For full product information, images and publications, please visit our [website](#).

DATA IMAGES



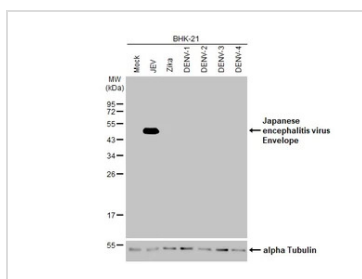
GTX638878 ICC/IF Image

Japanese encephalitis virus Envelope antibody [HL2517] detects Japanese encephalitis virus Envelope protein by immunofluorescent analysis.

Sample: Mock and transfected 293T cells were fixed in 4% paraformaldehyde at RT for 15 min.

Green: Japanese encephalitis virus Envelope stained by Japanese encephalitis virus Envelope antibody [HL2517] (GTX638878) diluted at 1:500.

Blue: Fluoroshield with DAPI (GTX30920).



GTX638878 WB Image

Infected BHK-21 whole cell extracts were separated by 12% SDS-PAGE, and the membrane was blotted with Japanese encephalitis virus Envelope antibody [HL2517] (GTX638878) diluted at 1:1000. The HRP-conjugated anti-rabbit IgG antibody (GTX213110-01) was used to detect the primary antibody.



For full product information, images and publications, please visit our [website](#).