

AGTR1 antibody [HL2524]

Cat. No. GTX638885

Host	Rabbit
Clonality	Monoclonal
Isotype	IgG
Applications	WB, ICC/IF, IHC-P
Reactivity	Human, Mouse

Package
100 µl, 25 µl

Applications

Application Note

*Optimal dilutions/concentrations should be determined by the researcher.

Suggested dilution	Recommended dilution
WB	Assay dependent
ICC/IF	Assay dependent
IHC-P	1:100-1:1000

Not tested in other applications.

Observed MW (kDa) 41 kDa.

Properties

Form	Liquid
Buffer	PBS
Preservative	No preservatives
Storage	Store as concentrated solution. Centrifuge briefly prior to opening vial. For short-term storage (1-2 weeks), store at 4°C. For long-term storage, aliquot and store at -20°C or below. Avoid multiple freeze-thaw cycles.
Concentration	1 mg/ml (Please refer to the vial label for the specific concentration.)
Immunogen	Synthetic peptide encompassing a sequence within the Extracellular domain of human AGTR1. The exact sequence is proprietary.
Purification	Affinity purified by Protein A.
Conjugation	Unconjugated

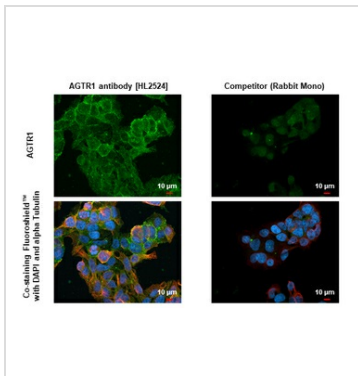
Note

For laboratory research use only. Not for any clinical, therapeutic, or diagnostic use in humans or animals. Not for animal or human consumption.

Purchasers shall not, and agree not to enable third parties to, analyze, copy, reverse engineer or otherwise attempt to determine the structure or sequence of the product.



For full product information, images and publications, please visit our [website](#).

DATA IMAGES

GTG638885 ICC/IF Image

AGTR1 antibody [HL2524] detects AGTR1 protein by immunofluorescent analysis.

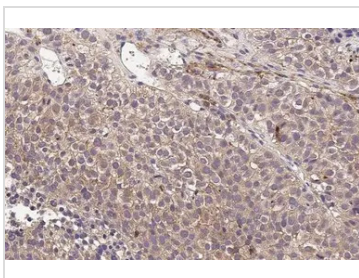
Sample: Huh-7 cells were fixed in 4% paraformaldehyde at RT for 15 min.

Green: AGTR1 stained by AGTR1 antibody [HL2524] (GTG638885) diluted at 1:500 and competitor's antibody (competitor) diluted at 1:500.

Red: alpha Tubulin, a cytoskeleton marker, stained by alpha Tubulin antibody [GT114] (GTG628802) diluted at 1:1000.

Blue: Fluoroshield with DAPI (GTG30920).

*Competitor's antibody is not affiliated with GeneTex and does not endorse this product.

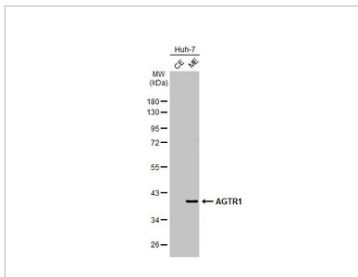

GTG638885 IHC-P Image

AGTR1 antibody [HL2524] detects AGTR1 protein at cell membrane and cytoplasm by immunohistochemical analysis.

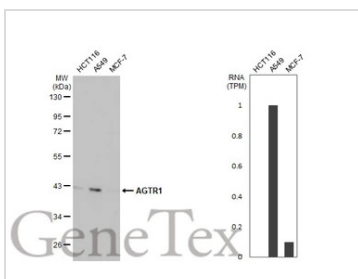
Sample: Paraffin-embedded Huh-7 xenograft.

AGTR1 stained by AGTR1 antibody [HL2524] (GTG638885) diluted at 1:100.

Antigen Retrieval: Citrate buffer, pH 6.0, 15 min


GTG638885 WB Image

Huh-7 cytoplasmic extracts and membrane extracts (30 µg) were separated by 10% SDS-PAGE, and the membrane was blotted with AGTR1 antibody [HL2524] (GTG638885) diluted at 1:500. The HRP-conjugated anti-rabbit IgG antibody (GTG213110-01) was used to detect the primary antibody, and the signal was developed with Trident ECL plus-Enhanced. (CE: cytoplasmic extract; ME: membrane extract)


GTG638885 WB Image

Various whole cell extracts (30 µg) were separated by 10% SDS-PAGE, and the membrane was blotted with AGTR1 antibody [HL2524] (GTG638885) diluted at 1:1000. The HRP-conjugated anti-rabbit IgG antibody (GTG213110-01) was used to detect the primary antibody, and the signal was developed with Trident ECL plus-Enhanced. Corresponding RNA expression data for the same cell lines are based on Human Protein Atlas program.



For full product information, images and publications, please visit our [website](https://www.genetex.com).