

## Mpox virus A29L antibody [HL2527]

**Cat. No. GTX638888**

<b>Host</b>	Rabbit
<b>Clonality</b>	Monoclonal
<b>Isotype</b>	IgG
<b>Applications</b>	WB, ICC/IF
<b>Reactivity</b>	Monkeypox, Vaccinia virus

References ( 1 )

Package

100 µl, 25 µl

## Applications

**Application Note**

\*Optimal dilutions/concentrations should be determined by the researcher.

Suggested dilution	Recommended dilution
WB	1:500-1:10000
ICC/IF	Assay dependent

Not tested in other applications.

## Properties

<b>Form</b>	Liquid
<b>Buffer</b>	PBS
<b>Preservative</b>	No preservative
<b>Storage</b>	Store as concentrated solution. Centrifuge briefly prior to opening vial. For short-term storage (1-2 weeks), store at 4°C. For long-term storage, aliquot and store at -20°C or below. Avoid multiple freeze-thaw cycles.
<b>Concentration</b>	1 mg/ml (Please refer to the vial label for the specific concentration.)
<b>Immunogen</b>	Full length of Monkeypox virus A29L recombinant protein (MPXV_USA_2022_MA001)
<b>Purification</b>	Affinity purified by Protein A.
<b>Conjugation</b>	Unconjugated

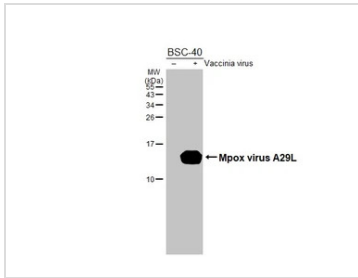
**Note**

For laboratory research use only. Not for any clinical, therapeutic, or diagnostic use in humans or animals. Not for animal or human consumption.

Purchasers shall not, and agree not to enable third parties to, analyze, copy, reverse engineer or otherwise attempt to determine the structure or sequence of the product.

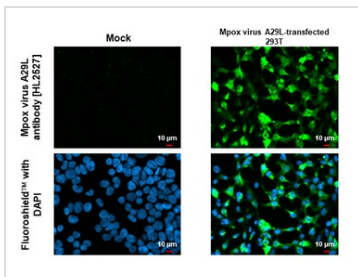
For full product information, images and publications, please visit our [website](#).

## DATA IMAGES



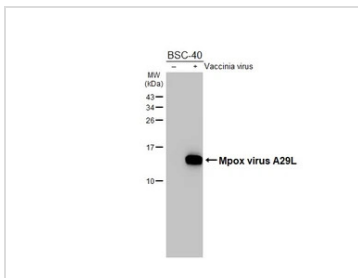
### GTX638888 WB Image

Non-infected (–) and infected (+) BSC-40 whole cell extracts (5 µg) were separated by 15% SDS-PAGE, and the membrane was blotted with Mpx virus A29L antibody [HL2527] (GTX638888) diluted at 1:1000. The HRP-conjugated anti-rabbit IgG antibody (GTX213110-01) was used to detect the primary antibody.



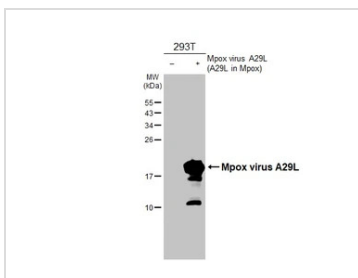
### GTX638888 ICC/IF Image

Mpx virus A29L antibody [HL2527] detects Mpx virus A29L protein by immunofluorescent analysis. Sample: Mock and transfected 293T cells were fixed in 4% paraformaldehyde at RT for 15 min. Green: Mpx virus A29L stained by Mpx virus A29L antibody [HL2527] (GTX638888) diluted at 1:500. Blue: Fluoroshield with DAPI (GTX30920).



### GTX638888 WB Image

Non-infected (–) and infected (+) BSC-40 whole cell extracts were separated by 15% SDS-PAGE, and the membrane was blotted with Mpx virus A29L antibody [HL2527] (GTX638888) diluted at 1:1000. The HRP-conjugated anti-rabbit IgG antibody (GTX213110-01) was used to detect the primary antibody.



### GTX638888 WB Image

Non-transfected (–) and transfected (+) 293T whole cell extracts (30 µg) were separated by 15% SDS-PAGE, and the membrane was blotted with Mpx virus A29L antibody [HL2527] (GTX638888) diluted at 1:5000. The HRP-conjugated anti-rabbit IgG antibody (GTX213110-01) was used to detect the primary antibody.



For full product information, images and publications, please visit our [website](https://www.genetex.com).