

## Lassa virus Glycoprotein G1 antibody [HL2536]

Cat. No. GTX638905

Host	Rabbit
Clonality	Monoclonal
Isotype	IgG
Applications	WB, ICC/IF
Reactivity	Lassa virus

Package  
100 µl, 25 µl

## Applications

## Application Note

\*Optimal dilutions/concentrations should be determined by the researcher.

Suggested dilution	Recommended dilution
WB	1:500-1:3000
ICC/IF	Assay dependent

Not tested in other applications.

## Properties

Form	Liquid
Buffer	PBS
Preservative	No preservatives
Storage	Store as concentrated solution. Centrifuge briefly prior to opening vial. For short-term storage (1-2 weeks), store at 4°C. For long-term storage, aliquot and store at -20°C or below. Avoid multiple freeze-thaw cycles.
Concentration	1 mg/ml (Please refer to the vial label for the specific concentration.)
Immunogen	Recombinant fragment of Lassa virus Glycoprotein G1. (strain Mouse/Sierra Leone/Josiah/1976)
Purification	Affinity purified by Protein A.
Conjugation	Unconjugated

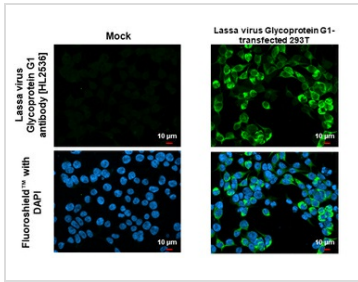
## Note

For laboratory research use only. Not for any clinical, therapeutic, or diagnostic use in humans or animals. Not for animal or human consumption.

Purchasers shall not, and agree not to enable third parties to, analyze, copy, reverse engineer or otherwise attempt to determine the structure or sequence of the product.



For full product information, images and publications, please visit our [website](#).

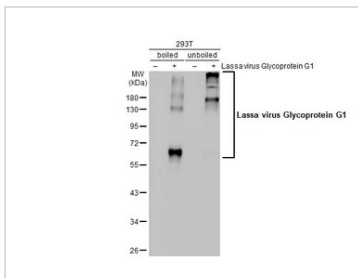
**DATA IMAGES**

**GTX638905 ICC/IF Image**

Lassa virus Glycoprotein G1 antibody [HL2536] detects Lassa virus Glycoprotein G1 protein by immunofluorescent analysis.

Sample: Mock and transfected 293T cells were fixed in 4% paraformaldehyde at RT for 15 min.

Green: Lassa virus Glycoprotein G1 stained by Lassa virus Glycoprotein G1 antibody [HL2536] (GTX638905) diluted at 1:500.

Blue: Fluoroshield with DAPI (GTX30920).


**GTX638905 WB Image**

Non-transfected (–) and transfected (+) boiled and unboiled 293T whole cell extracts (30 μg) were separated by 10% SDS-PAGE, and the membrane was blotted with Lassa virus Glycoprotein G1 antibody [HL2536] (GTX638905) diluted at 1:5000. The HRP-conjugated anti-rabbit IgG antibody (GTX213110-01) was used to detect the primary antibody, and the signal was developed with Trident ECL plus-Enhanced.



For full product information, images and publications, please visit our [website](https://www.genetex.com).