

SARS-CoV-2 (COVID-19) nsp14 antibody [HL2539]

Cat. No. GTX638908

Host	Rabbit
Clonality	Monoclonal
Isotype	IgG
Applications	WB, ICC/IF
Reactivity	SARS Coronavirus 2

Package
100 µl, 25 µl

Applications

Application Note

*Optimal dilutions/concentrations should be determined by the researcher.

Suggested dilution	Recommended dilution
WB	1:1000-1:10000
ICC/IF	Assay dependent

Not tested in other applications.

Properties

Form	Liquid
Buffer	PBS
Preservative	No preservatives
Storage	Store as concentrated solution. Centrifuge briefly prior to opening vial. For short-term storage (1-2 weeks), store at 4°C. For long-term storage, aliquot and store at -20°C or below. Avoid multiple freeze-thaw cycles.
Concentration	1 mg/ml (Please refer to the vial label for the specific concentration.)
Immunogen	Recombinant fragment of SARS-CoV-2 (COVID-19) nsp14. (Strain:Wuhan-Hu-1)
Purification	Affinity purified by Protein A.
Conjugation	Unconjugated

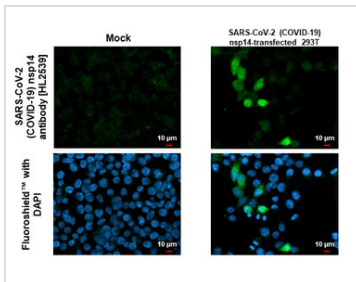
Note

For laboratory research use only. Not for any clinical, therapeutic, or diagnostic use in humans or animals. Not for animal or human consumption.

Purchasers shall not, and agree not to enable third parties to, analyze, copy, reverse engineer or otherwise attempt to determine the structure or sequence of the product.



For full product information, images and publications, please visit our [website](#).

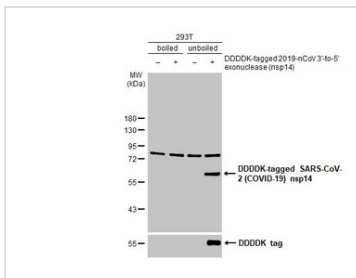
DATA IMAGES

GTx638908 ICC/IF Image

SARS-CoV-2 (COVID-19) nsp14 antibody [HL2539] detects SARS-CoV-2 (COVID-19) nsp14 protein by immunofluorescent analysis.

Sample: Mock and transfected 293T cells were fixed in ice-cold MeOH for 5 min.

Green: SARS-CoV-2 (COVID-19) nsp14 stained by SARS-CoV-2 (COVID-19) nsp14 antibody [HL2539] (GTx638908) diluted at 1:500.

Blue: Fluoroshield with DAPI (GTx30920).


GTx638908 WB Image

Non-transfected (–) and transfected (+) boiled and unboiled 293T whole cell and membrane extracts (30 μg) were separated by 10% SDS-PAGE, and the membrane was blotted with SARS-CoV-2 (COVID-19) nsp14 antibody [HL2539] (GTx638908) diluted at 1:1000. The HRP-conjugated anti-rabbit IgG antibody (GTx213110-01) was used to detect the primary antibody.



For full product information, images and publications, please visit our [website](https://www.genetex.com).