

EGFRvIII antibody [HL2541]

Cat. No. GTX638910

Host	Rabbit
Clonality	Monoclonal
Isotype	IgG
Applications	WB, ICC/IF, IHC-P (cell pellet)
Reactivity	Human

Package
100 µl, 25 µl

Applications

Application Note

*Optimal dilutions/concentrations should be determined by the researcher.

Suggested dilution	Recommended dilution
WB	1:500-1:3000
ICC/IF	Assay dependent
IHC-P (cell pellet)	Assay dependent

Not tested in other applications.

Properties

Form	Liquid
Buffer	PBS
Preservative	No preservatives
Storage	Store as concentrated solution. Centrifuge briefly prior to opening vial. For short-term storage (1-2 weeks), store at 4°C. For long-term storage, aliquot and store at -20°C or below. Avoid multiple freeze-thaw cycles.
Concentration	1 mg/ml (Please refer to the vial label for the specific concentration.)
Immunogen	Synthetic peptide of human EGFRvIII.
Purification	Affinity purified by Protein A.
Conjugation	Unconjugated

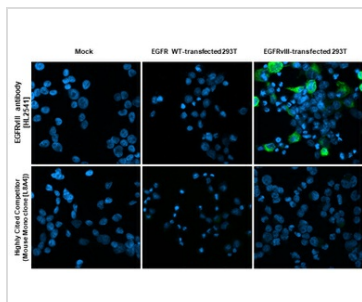
Note

For laboratory research use only. Not for any clinical, therapeutic, or diagnostic use in humans or animals. Not for animal or human consumption.

Purchasers shall not, and agree not to enable third parties to, analyze, copy, reverse engineer or otherwise attempt to determine the structure or sequence of the product.



For full product information, images and publications, please visit our [website](#).

DATA IMAGES

GTx638910 ICC/IF Image

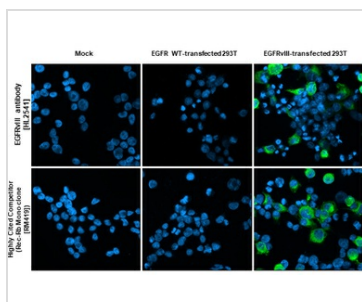
EGFRvIII antibody [HL2541] detects EGFRvIII protein by immunofluorescent analysis.

Sample: Mock and transfected 293T cells were fixed in ice-cold MeOH for 5 min.

Green: EGFRvIII stained by EGFRvIII antibody [HL2541] (GTx638910) diluted at 1:500 and competitor's antibody (highly cited competitor) diluted at 1:500.

Blue: Fluoroshield with DAPI (GTx30920).

*Competitor's antibody is not affiliated with GeneTex and does not endorse this product.


GTx638910 ICC/IF Image

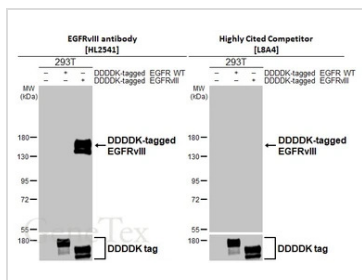
EGFRvIII antibody [HL2541] detects EGFRvIII protein by immunofluorescent analysis.

Sample: Mock and transfected 293T cells were fixed in ice-cold MeOH for 5 min.

Green: EGFRvIII stained by EGFRvIII antibody [HL2541] (GTx638910) diluted at 1:500 and competitor's antibody (highly cited competitor) diluted at 1:500.

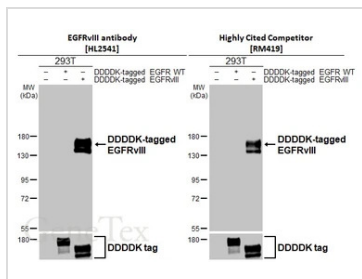
Blue: Fluoroshield with DAPI (GTx30920).

*Competitor's antibody is not affiliated with GeneTex and does not endorse this product.


GTx638910 WB Image

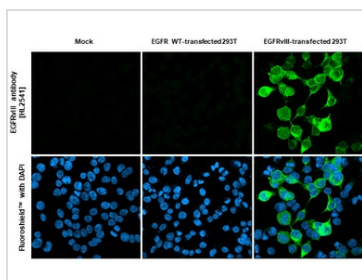
Non-transfected (-) and transfected (+) 293T whole cell extracts (30 µg) were separated by 7.5% SDS-PAGE, and the membranes were blotted with EGFRvIII antibody [HL2541] (GTx638910) diluted at 1:5000 and competitor's antibody (Highly Cited Antibody) diluted at 1:5000. The HRP-conjugated anti-rabbit IgG antibody (GTx213110-01) was used to detect the primary antibody.

*The competitor is not affiliated with GeneTex and does not endorse this product.


GTx638910 WB Image

Non-transfected (-) and transfected (+) 293T whole cell extracts (30 µg) were separated by 7.5% SDS-PAGE, and the membranes were blotted with EGFRvIII antibody [HL2541] (GTx638910) diluted at 1:5000 and competitor's antibody (Highly Cited Antibody) diluted at 1:5000. The HRP-conjugated anti-rabbit IgG antibody (GTx213110-01) was used to detect the primary antibody.

*The competitor is not affiliated with GeneTex and does not endorse this product.


GTx638910 ICC/IF Image

EGFRvIII antibody [HL2541] detects EGFRvIII protein by immunofluorescent analysis.

Sample: Mock and transfected 293T cells were fixed in ice-cold MeOH for 5 min.

Green: EGFRvIII stained by EGFRvIII antibody [HL2541] (GTx638910) diluted at 1:500.

Blue: Fluoroshield with DAPI (GTx30920).



For full product information, images and publications, please visit our [website](https://www.genetex.com).