

# Mpox virus A4L antibody [HL2555]

**Cat. No. GTX638927**

<b>Host</b>	Rabbit
<b>Clonality</b>	Monoclonal
<b>Isotype</b>	IgG
<b>Applications</b>	WB, ICC/IF
<b>Reactivity</b>	Monkeypox, Vaccinia virus

**Package**  
100 µl, 25 µl

## Applications

### Application Note

\*Optimal dilutions/concentrations should be determined by the researcher.

Suggested dilution	Recommended dilution
WB	1:500-1:10000
ICC/IF	Assay dependent

Not tested in other applications.

## Properties

<b>Form</b>	Liquid
<b>Buffer</b>	PBS
<b>Preservative</b>	No preservatives
<b>Storage</b>	Store as concentrated solution. Centrifuge briefly prior to opening vial. For short-term storage (1-2 weeks), store at 4°C. For long-term storage, aliquot and store at -20°C or below. Avoid multiple freeze-thaw cycles.
<b>Concentration</b>	1 mg/ml (Please refer to the vial label for the specific concentration.)
<b>Immunogen</b>	Full length of Monkeypox virus A4L recombinant protein (MPXV_USA_2022_MA001)
<b>Purification</b>	Affinity purified by Protein A.
<b>Conjugation</b>	Unconjugated

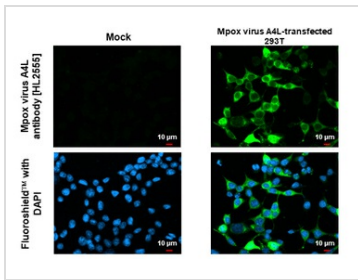
### Note

For laboratory research use only. Not for any clinical, therapeutic, or diagnostic use in humans or animals. Not for animal or human consumption.

Purchasers shall not, and agree not to enable third parties to, analyze, copy, reverse engineer or otherwise attempt to determine the structure or sequence of the product.



For full product information, images and publications, please visit our [website](#).

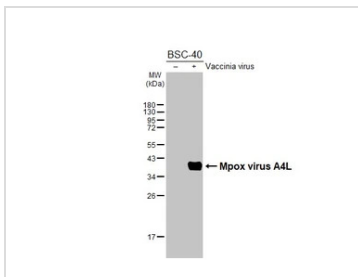
**DATA IMAGES**

**GTX638927 ICC/IF Image**

Mpx virus A4L antibody [HL2555] detects Mpx virus A4L protein by immunofluorescent analysis.

Sample: Mock and transfected 293T cells were fixed in ice-cold MeOH for 5 min.

Green: Mpx virus A4L stained by Mpx virus A4L antibody [HL2555] (GTX638927) diluted at 1:500.

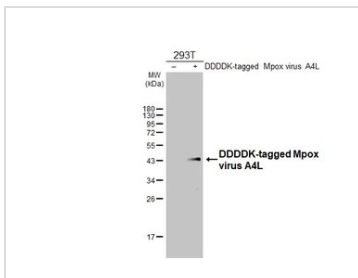
Blue: Fluoroshield with DAPI (GTX30920).


**GTX638927 WB Image**

Non-infected (–) and infected (+) BSC-40 whole cell extracts (5 μg) were separated by 12% SDS-PAGE, and

the membrane was blotted with Mpx virus A4L antibody [HL2555] (GTX638927) diluted at 1:1000. The

HRP-conjugated anti-rabbit IgG antibody (GTX213110-01) was used to detect the primary antibody.


**GTX638927 WB Image**

Non-transfected (–) and transfected (+) 293T whole cell extracts (30 μg) were separated by 12% SDS-PAGE,

and the membrane was blotted with Mpx virus A4L antibody [HL2555] (GTX638927) diluted at 1:5000. The

HRP-conjugated anti-rabbit IgG antibody (GTX213110-01) was used to detect the primary antibody.



For full product information, images and publications, please visit our [website](https://www.genetex.com).