

Chikungunya virus nsP1 antibody [HL2605]

Cat. No. GTX639057

Host	Rabbit
Clonality	Monoclonal
Isotype	IgG
Applications	WB, ICC/IF
Reactivity	Chikungunya Virus

Package
100 µl, 25 µl

Applications

Application Note

*Optimal dilutions/concentrations should be determined by the researcher.

Suggested dilution	Recommended dilution
WB	1:500-1:3000
ICC/IF	Assay dependent

Not tested in other applications.

Properties

Form	Liquid
Buffer	PBS
Preservative	No preservatives
Storage	Store as concentrated solution. Centrifuge briefly prior to opening vial. For short-term storage (1-2 weeks), store at 4°C. For long-term storage, aliquot and store at -20°C or below. Avoid multiple freeze-thaw cycles.
Concentration	1 mg/ml (Please refer to the vial label for the specific concentration.)
Immunogen	Recombinant fragment of Chikungunya virus nsP1. (strain S27-African prototype)
Purification	Affinity purified by Protein A.
Conjugation	Unconjugated

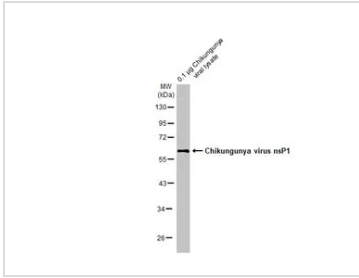
Note

For laboratory research use only. Not for any clinical, therapeutic, or diagnostic use in humans or animals. Not for animal or human consumption.

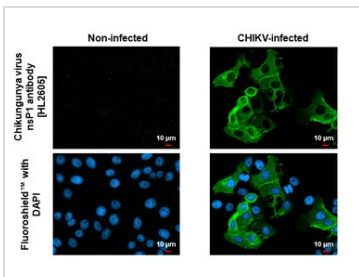
Purchasers shall not, and agree not to enable third parties to, analyze, copy, reverse engineer or otherwise attempt to determine the structure or sequence of the product.



For full product information, images and publications, please visit our [website](#).

DATA IMAGES

GTX639057 WB Image

Chikungunya viral lysate (0.1 µg) was separated by 10% SDS-PAGE, and the membrane was blotted with Chikungunya virus nsP1 antibody [HL2605] (GTX639057) diluted at 1:1000. The HRP-conjugated anti-rabbit IgG antibody (GTX213110-01) was used to detect the primary antibody.

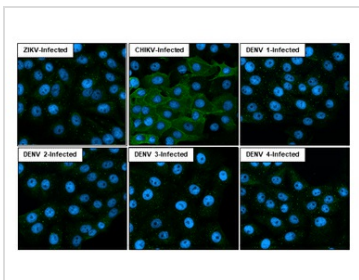

GTX639057 ICC/IF Image

Immunofluorescent analysis of Chikungunya virus infected cells using Chikungunya virus nsP1 antibody [HL2605] antibody (GTX639057).

Sample: Chikungunya virus infected cells slide.

Green: Chikungunya virus nsP1 antibody [HL2605] antibody (GTX639057) diluted at 1:100.

Blue: Fluoroshield with DAPI (GTX30920).


GTX639057 ICC/IF Image

Chikungunya virus nsP1 antibody [HL2605] detects Chikungunya virus nsP1 protein by immunofluorescent analysis.

Sample: Mock and infected Multiple virus infected cells slide cells were fixed in Multiple virus kit.

Green: Chikungunya virus nsP1 stained by Chikungunya virus nsP1 antibody [HL2605] (GTX639057) diluted at 1:100.

Blue: Fluoroshield with DAPI (GTX30920).



For full product information, images and publications, please visit our [website](https://www.genetex.com).