

CXCR4 antibody [HL2612]

Cat. No. GTX639064

| | |
|---------------------|-------------------|
| Host | Rabbit |
| Clonality | Monoclonal |
| Isotype | IgG |
| Applications | WB, ICC/IF |
| Reactivity | Human, Mouse, Dog |

References (2)

★★★★★ Review (1)

Package

100 µl, 25 µl

Applications

Application Note

*Optimal dilutions/concentrations should be determined by the researcher.

| Suggested dilution | Recommended dilution |
|--------------------|----------------------|
| WB | 1:500-1:3000 |
| ICC/IF | Assay dependent |

Not tested in other applications.

Observed MW (kDa) 40 kDa.

Product Note This antibody was raised against human CXCR4 Intracellular domain.

Properties

| | |
|----------------------|--|
| Form | Liquid |
| Buffer | PBS |
| Preservative | No preservative |
| Storage | Store as concentrated solution. Centrifuge briefly prior to opening vial. For short-term storage (1-2 weeks), store at 4°C. For long-term storage, aliquot and store at -20°C or below. Avoid multiple freeze-thaw cycles. |
| Concentration | 1 mg/ml (Please refer to the vial label for the specific concentration.) |
| Immunogen | Synthetic peptide encompassing a sequence within the Intracellular domain of human CXCR4. The exact sequence is proprietary. |
| Purification | Affinity purified by Protein A. |
| Conjugation | Unconjugated |

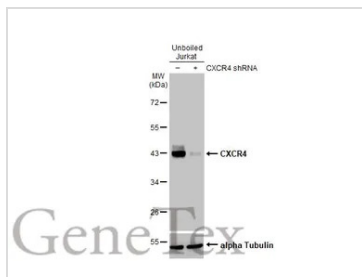
Note

For laboratory research use only. Not for any clinical, therapeutic, or diagnostic use in humans or animals. Not for animal or human consumption.

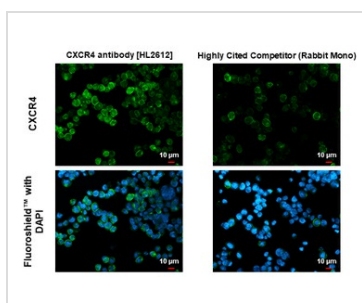
Purchasers shall not, and agree not to enable third parties to, analyze, copy, reverse engineer or otherwise attempt to determine the structure or sequence of the product.



For full product information, images and publications, please visit our [website](#).

DATA IMAGES

GTX639064 WB Image

Non-transfected (–) and transfected (+) Jurkat whole cell extracts (30 µg) were separated by 10% SDS-PAGE, and the membrane was blotted with CXCR4 antibody [HL2612] (GTX639064) diluted at 1:1000. The HRP-conjugated anti-rabbit IgG antibody (GTX213110-01) was used to detect the primary antibody.


GTX639064 ICC/IF Image

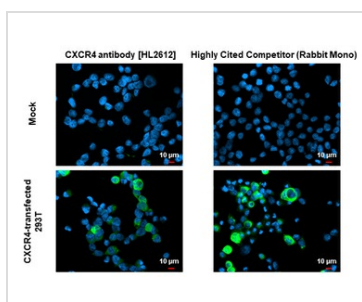
CXCR4 antibody [HL2612] detects CXCR4 protein by immunofluorescent analysis.

Sample: Jurkat cells were fixed in ice-cold MeOH for 5 min.

Green: CXCR4 stained by CXCR4 antibody [HL2612] (GTX639064) diluted at 1:500 and competitor's antibody (Highly Cited Competitor) diluted at 1:500.

Blue: Fluoroshield with DAPI (GTX30920).

*Competitor's antibody is not affiliated with GeneTex and does not endorse this product.


GTX639064 ICC/IF Image

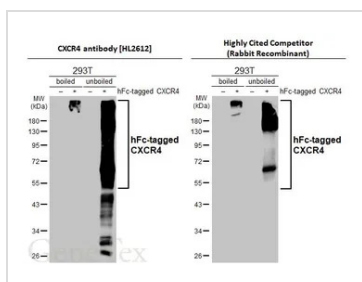
CXCR4 antibody [HL2612] detects CXCR4 protein by immunofluorescent analysis.

Sample: Mock and transfected 293T cells were fixed in ice-cold MeOH for 5 min.

Green: CXCR4 stained by CXCR4 antibody [HL2612] (GTX639064) diluted at 1:500 and competitor's antibody (highly cited competitor) diluted at 1:500.

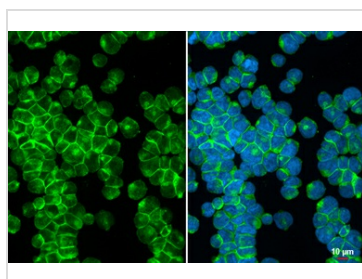
Blue: Fluoroshield with DAPI (GTX30920).

*Competitor's antibody is not affiliated with GeneTex and does not endorse this product.


GTX639064 WB Image

Non-transfected (–) and transfected (+) boiled and unboiled 293T whole cell extracts (30 µg) were separated by 10% SDS-PAGE, and the membranes were blotted with CXCR4 antibody [HL2612] (GTX639064) diluted at 1:1000 and competitor's antibody (Highly Cited Antibody) diluted at 1:1000. The HRP-conjugated anti-rabbit IgG antibody (GTX213110-01) was used to detect the primary antibody.

*The competitor is not affiliated with GeneTex and does not endorse this product.


GTX639064 ICC/IF Image

CXCR4 antibody [HL2612] detects CXCR4 protein at cell membrane by immunofluorescent analysis.

Sample: Jurkat cells were fixed in 4% paraformaldehyde at RT for 15 min.

Green: CXCR4 stained by CXCR4 antibody [HL2612] (GTX639064) diluted at 1:500.

Blue: Fluoroshield with DAPI (GTX30920).



For full product information, images and publications, please visit our [website](https://www.genetex.com).