

## ANP antibody [HL2617]

**Cat. No. GTX639071**

<b>Host</b>	Rabbit
<b>Clonality</b>	Monoclonal
<b>Isotype</b>	IgG
<b>Applications</b>	WB, ICC/IF, IHC-P, ELISA, Sandwich ELISA
<b>Reactivity</b>	Human, Mouse, Rat

References ( 1 )

Package

100 µl, 25 µl

## Applications

**Application Note**

\*Optimal dilutions/concentrations should be determined by the researcher.

Suggested dilution	Recommended dilution
WB	Assay dependent
ICC/IF	Assay dependent
IHC-P	Assay dependent
ELISA	Assay dependent
Sandwich ELISA	Assay dependent

**Note : Capture: GTX634219, Detection: GTX639071**

Not tested in other applications.

**Observed MW (kDa)** 17 kDa.

## Properties

<b>Form</b>	Liquid
<b>Buffer</b>	PBS
<b>Preservative</b>	No preservatives
<b>Storage</b>	Store as concentrated solution. Centrifuge briefly prior to opening vial. For short-term storage (1-2 weeks), store at 4°C. For long-term storage, aliquot and store at -20°C or below. Avoid multiple freeze-thaw cycles.
<b>Concentration</b>	1 mg/ml (Please refer to the vial label for the specific concentration.)
<b>Immunogen</b>	Full length human ANP recombinant protein
<b>Purification</b>	Affinity purified by Protein A.
<b>Conjugation</b>	Unconjugated



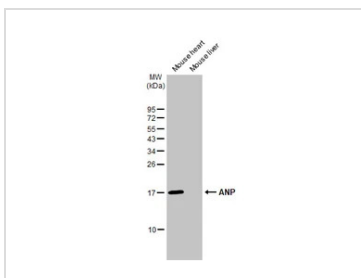
For full product information, images and publications, please visit our [website](#).

For laboratory research use only. Not for any clinical, therapeutic, or diagnostic use in humans or animals. Not for animal or human consumption.

**Note**

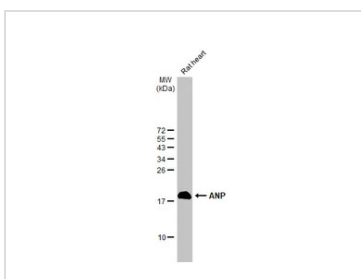
Purchasers shall not, and agree not to enable third parties to, analyze, copy, reverse engineer or otherwise attempt to determine the structure or sequence of the product.

DATA IMAGES



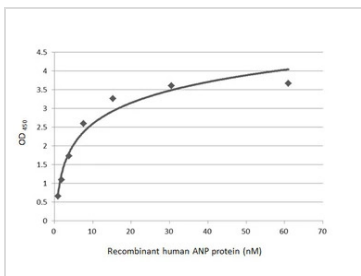
**GTX639071 WB Image**

Various tissue extracts (50 µg) were separated by 15% SDS-PAGE, and the membrane was blotted with ANP antibody [HL2617] (GTX639071) diluted at 1:1000. The HRP-conjugated anti-rabbit IgG antibody (GTX213110-01) was used to detect the primary antibody.



**GTX639071 WB Image**

Rat tissue extract (50 µg) was separated by 15% SDS-PAGE, and the membrane was blotted with ANP antibody [HL2617] (GTX639071) diluted at 1:1000. The HRP-conjugated anti-rabbit IgG antibody (GTX213110-01) was used to detect the primary antibody.

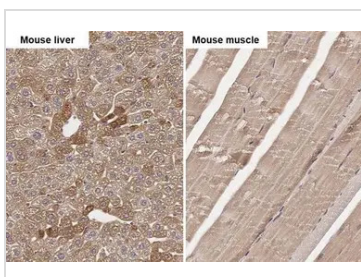


**GTX639071 ELISA Image**

Sandwich ELISA detection of recombinant Human ANP protein, GST tag (GTX109255-pro) using antibodies as below.

**Capture:** ANP antibody [GT1068] (GTX634219) (5 µg/mL)

**Detection:** ANP antibody [HL2617] (GTX639071) (1 µg/mL)



**GTX639071 IHC-P Image**

ANP antibody [HL2617] detects ANP protein by immunohistochemical analysis.

Sample: Paraffin-embedded mouse tissues.

ANP stained by ANP antibody [HL2617] (GTX639071) diluted at 1:100.

Antigen Retrieval: Citrate buffer, pH 6.0, 15 min



For full product information, images and publications, please visit our [website](#).