

RAS (G12D Mutant) antibody [HL2640]

Cat. No. GTX639096

Host	Rabbit
Clonality	Monoclonal
Isotype	IgG
Applications	WB, ICC/IF
Reactivity	Human

Package
100 µl, 25 µl

Applications

Application Note

*Optimal dilutions/concentrations should be determined by the researcher.

Suggested dilution	Recommended dilution
WB	1:500-1:3000
ICC/IF	Assay dependent

Not tested in other applications.

Observed MW (kDa) 22 kDa.

Product Note

Based on internal testing, this antibody specifically recognizes RAS G12D mutant and does not cross-react with wild-type RAS or the G12V, G12R, G12C, G12A, or G12S mutants.

Properties

Form Liquid

Buffer PBS

Preservative No preservatives

Storage Store as concentrated solution. Centrifuge briefly prior to opening vial. For short-term storage (1-2 weeks), store at 4°C. For long-term storage, aliquot and store at -20°C or below. Avoid multiple freeze-thaw cycles.

Concentration 1 mg/ml (Please refer to the vial label for the specific concentration.)

Immunogen Synthetic peptide of human RAS (G12D Mutant)

Purification Affinity purified by Protein A.

Conjugation Unconjugated

Note

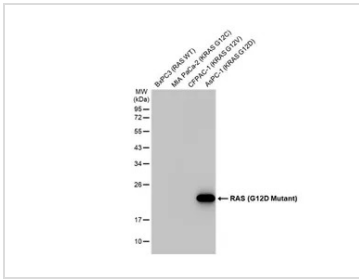
For laboratory research use only. Not for any clinical, therapeutic, or diagnostic use in humans or animals. Not for animal or human consumption.

Purchasers shall not, and agree not to enable third parties to, analyze, copy, reverse engineer or otherwise attempt to determine the structure or sequence of the product.



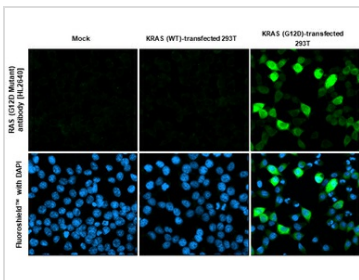
For full product information, images and publications, please visit our [website](#).

DATA IMAGES



GTX639096 WB Image

Various whole cell extracts (30 µg) were separated by 12% SDS-PAGE, and the membrane was blotted with RAS (G12D Mutant) antibody [HL2640] (GTX639096) diluted at 1:1000. The HRP-conjugated anti-rabbit IgG antibody (GTX213110-01) was used to detect the primary antibody.

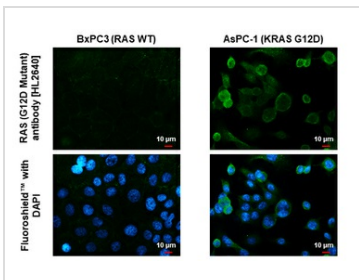


GTX639096 ICC/IF Image

RAS (G12D Mutant) antibody [HL2640] detects RAS (G12D Mutant) protein by immunofluorescent analysis. Sample: Mock and transfected 293T cells were fixed in ice-cold MeOH for 5 min.

Green: RAS (G12D Mutant) stained by RAS (G12D Mutant) antibody [HL2640] (GTX639096) diluted at 1:500.

Blue: Fluoroshield with DAPI (GTX30920).

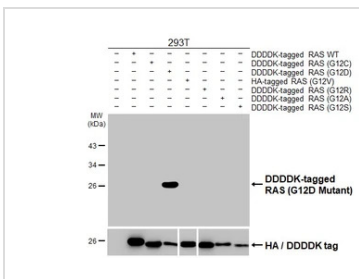


GTX639096 ICC/IF Image

RAS (G12D Mutant) antibody [HL2640] detects RAS (G12D Mutant) protein by immunofluorescent analysis. Sample: BxPC3 (RAS WT) and AsPC-1 (KRAS G12D) cells were fixed in 4% paraformaldehyde at RT for 15 min.

Green: RAS (G12D Mutant) stained by RAS (G12D Mutant) antibody [HL2640] (GTX639096) diluted at 1:500.

Blue: Fluoroshield with DAPI (GTX30920).



GTX639096 WB Image

Non-transfected (-) and transfected (+) 293T whole cell extracts (30 µg) were separated by 12% SDS-PAGE, and the membrane was blotted with RAS (G12D Mutant) antibody [HL2640] (GTX639096) diluted at 1:5000. The HRP-conjugated anti-rabbit IgG antibody (GTX213110-01) was used to detect the primary antibody.



For full product information, images and publications, please visit our [website](#).