

Dengue virus NS1 protein antibody [HL2658]

Cat. No. GTX639322

Host	Rabbit
Clonality	Monoclonal
Isotype	IgG
Applications	WB, ICC/IF
Reactivity	Dengue virus 1, Dengue virus 2, Dengue virus 3, Dengue virus 4

References (1)

★★★★★ Review (1)

Package

100 µl, 25 µl

Applications

Application Note

*Optimal dilutions/concentrations should be determined by the researcher.

Suggested dilution	Recommended dilution
WB	1:500-1:3000
ICC/IF	Assay dependent

Not tested in other applications.

Product Note

This antibody is specific for Dengue virus 1/2/3/4 NS1 protein, and it does not cross react with JEV and Zika NS1 protein. The validated Dengue virus serotype for each application may differ. Please refer to the validated data.

Properties

Form	Liquid
Buffer	PBS
Preservative	No preservative
Storage	Store as concentrated solution. Centrifuge briefly prior to opening vial. For short-term storage (1-2 weeks), store at 4°C. For long-term storage, aliquot and store at -20°C or below. Avoid multiple freeze-thaw cycles.
Concentration	1 mg/ml (Please refer to the vial label for the specific concentration.)
Immunogen	Recombinant fragment of Dengue virus NS1 protein (strain Thailand/16681/1984)
Purification	Affinity purified by Protein A.
Conjugation	Unconjugated

Note

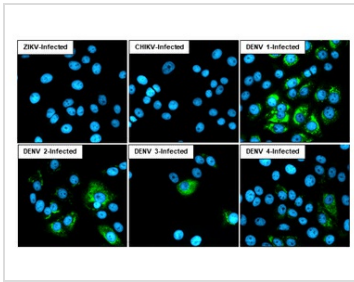
For laboratory research use only. Not for any clinical, therapeutic, or diagnostic use in humans or animals. Not for animal or human consumption.

Purchasers shall not, and agree not to enable third parties to, analyze, copy, reverse engineer or otherwise attempt to determine the structure or sequence of the product.



For full product information, images and publications, please visit our [website](#).

DATA IMAGES



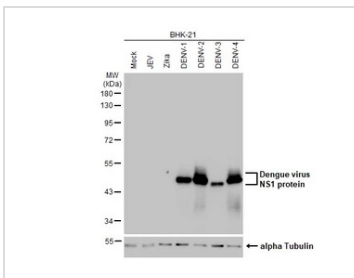
GTX639322 ICC/IF Image

Dengue virus NS1 protein antibody [HL2658] detects Dengue virus NS1 protein protein by immunofluorescent analysis.

Sample: Mock and infected Multiple virus infected cells slide cells were fixed in Multiple virus kit.

Green: Dengue virus NS1 protein stained by Dengue virus NS1 protein antibody [HL2658] (GTX639322) diluted at 1:100.

Blue: Fluoroshield with DAPI (GTX30920).



GTX639322 WB Image

Non-infected and infected BHK-21 whole cell extracts were separated by 10% SDS-PAGE, and the membrane was blotted with Dengue virus NS1 protein antibody [HL2658] (GTX639322) diluted at 1:1000.

The HRP-conjugated anti-rabbit IgG antibody (GTX213110-01) was used to detect the primary antibody.



For full product information, images and publications, please visit our [website](https://www.genetex.com).