

# FPRL1 antibody [HL2664]

**Cat. No. GTX639328**

<b>Host</b>	Rabbit
<b>Clonality</b>	Monoclonal
<b>Isotype</b>	IgG
<b>Applications</b>	WB, ICC/IF, IHC-P
<b>Reactivity</b>	Human, Mouse

**Package**  
100 µl, 25 µl

## Applications

### Application Note

\*Optimal dilutions/concentrations should be determined by the researcher.

Suggested dilution	Recommended dilution
WB	1:500-1:3000
ICC/IF	Assay dependent
IHC-P	Assay dependent

Not tested in other applications.

**Product Note** This antibody was raised against human FPRL1 Extracellular domain.

## Properties

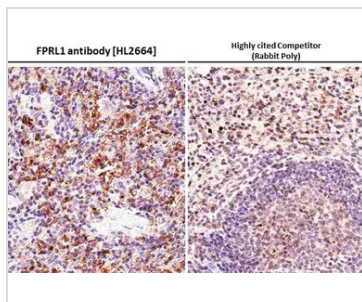
<b>Form</b>	Liquid
<b>Buffer</b>	PBS
<b>Preservative</b>	No preservatives
<b>Storage</b>	Store as concentrated solution. Centrifuge briefly prior to opening vial. For short-term storage (1-2 weeks), store at 4°C. For long-term storage, aliquot and store at -20°C or below. Avoid multiple freeze-thaw cycles.
<b>Concentration</b>	1 mg/ml (Please refer to the vial label for the specific concentration.)
<b>Immunogen</b>	Recombinant protein encompassing a sequence within the Extracellular domain of human FPRL1. The exact sequence is proprietary.
<b>Purification</b>	Affinity purified by Protein A.
<b>Conjugation</b>	Unconjugated

**Note** For laboratory research use only. Not for any clinical, therapeutic, or diagnostic use in humans or animals. Not for animal or human consumption.

Purchasers shall not, and agree not to enable third parties to, analyze, copy, reverse engineer or otherwise attempt to determine the structure or sequence of the product.



For full product information, images and publications, please visit our [website](#).

**DATA IMAGES**

**GTX639328 IHC-P Image**

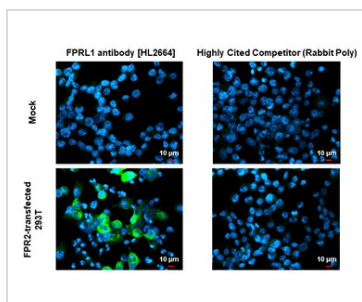
FPRL1 antibody [HL2664] detects FPRL1 protein at cell membrane by immunohistochemical analysis.

Sample: Paraffin-embedded mouse spleen.

FPRL1 stained by FPRL1 antibody [HL2664] (GTX639328) diluted at 1:200 and competitor's antibody (NLS1878) diluted at 1:200.

Antigen Retrieval: Citrate buffer, pH 6.0, 15 min

\*Competitor's antibody is not affiliated with GeneTex and does not endorse this product.


**GTX639328 ICC/IF Image**

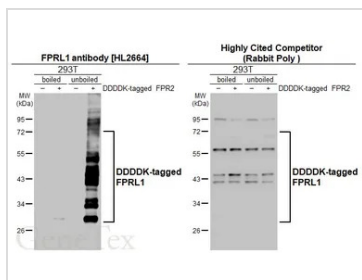
FPRL1 antibody [HL2664] detects FPRL1 protein by immunofluorescent analysis.

Sample: Mock and transfected 293T cells were fixed in ice-cold MeOH for 5 min.

Green: FPRL1 stained by FPRL1 antibody [HL2664] (GTX639328) diluted at 1:500 and competitor's antibody (highly cited competitor) diluted at 1:500.

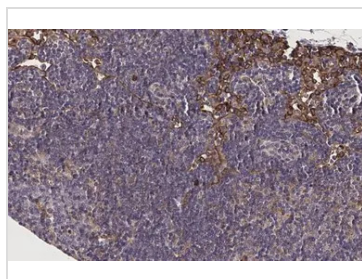
Blue: Fluoroshield with DAPI (GTX30920).

\*Competitor's antibody is not affiliated with GeneTex and does not endorse this product.


**GTX639328 WB Image**

Non-transfected (-) and transfected (+) boiled and unboiled 293T whole cell extracts (30 µg) were separated by 10% SDS-PAGE, and the membranes were blotted with FPRL1 antibody [HL2664] (GTX639328) diluted at 1:1000 and competitor's antibody (competitor) diluted at 1:1000. The HRP-conjugated anti-rabbit IgG antibody (GTX213110-01) was used to detect the primary antibody.

\*The competitor is not affiliated with GeneTex and does not endorse this product.

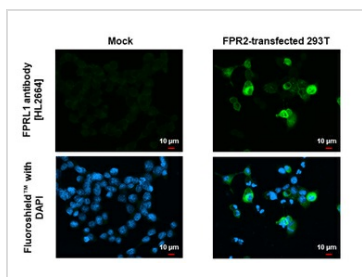

**GTX639328 IHC-P Image**

FPRL1 antibody [HL2664] detects FPRL1 protein at cell membrane by immunohistochemical analysis.

Sample: Paraffin-embedded mouse spleen.

FPRL1 stained by FPRL1 antibody [HL2664] (GTX639328) diluted at 1:100.

Antigen Retrieval: Citrate buffer, pH 6.0, 15 min


**GTX639328 ICC/IF Image**

FPRL1 antibody [HL2664] detects FPRL1 protein by immunofluorescent analysis.

Sample: Mock and transfected 293T cells were fixed in ice-cold MeOH for 5 min.

Green: FPRL1 stained by FPRL1 antibody [HL2664] (GTX639328) diluted at 1:500.

Blue: Fluoroshield with DAPI (GTX30920).



For full product information, images and publications, please visit our [website](https://www.genetex.com).