

## Rhodopsin antibody [HL2668]

Cat. No. GTX639332

|              |                   |
|--------------|-------------------|
| Host         | Rabbit            |
| Clonality    | Monoclonal        |
| Isotype      | IgG               |
| Applications | WB, IHC-P, FCM    |
| Reactivity   | Human, Mouse, Rat |

Package  
100 µl, 25 µl

## Applications

## Application Note

\*Optimal dilutions/concentrations should be determined by the researcher.

| Suggested dilution | Recommended dilution |
|--------------------|----------------------|
| WB                 | 1:500-1:3000         |
| IHC-P              | Assay dependent      |
| FCM                | Assay dependent      |

Not tested in other applications.

**Observed MW (kDa)** 34 (monomer), 60 (dimer), >72 (multimers) kDa.

**Product Note** This antibody is specific for human RHO protein and does not cross react with human RGR protein. This antibody was raised against human Rhodopsin Extracellular domain.

## Properties

|               |  |
|---------------|--|
| Form          | Liquid   |
| Buffer        | PBS  |
| Preservative  | No preservatives   |
| Storage       | Store as concentrated solution. Centrifuge briefly prior to opening vial. For short-term storage (1-2 weeks), store at 4°C. For long-term storage, aliquot and store at -20°C or below. Avoid multiple freeze-thaw cycles. |
| Concentration | 1 mg/ml (Please refer to the vial label for the specific concentration.)   |
| Immunogen     | Synthetic peptide encompassing a sequence within the Extracellular domain human of Rhodopsin. The exact sequence is proprietary.   |
| Purification  | Affinity purified by Protein A.  |
| Conjugation   | Unconjugated   |



For full product information, images and publications, please visit our [website](#).

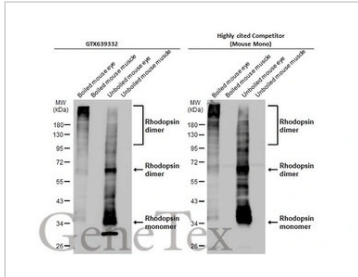
Date 2025 / 12 / 06 Page 1 of 2

For laboratory research use only. Not for any clinical, therapeutic, or diagnostic use in humans or animals. Not for animal or human consumption.

#### Note

Purchasers shall not, and agree not to enable third parties to, analyze, copy, reverse engineer or otherwise attempt to determine the structure or sequence of the product.

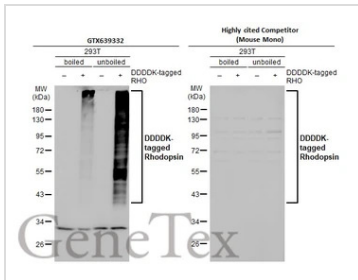
#### DATA IMAGES



#### GTX639332 WB Image

Boiled and unboiled mouse tissue extract (50 µg) were separated by 10% SDS-PAGE, and the membranes were blotted with Rhodopsin antibody [HL2668] (GTX639332) diluted at 1:1000 and competitor's antibody (Clone 1D4) diluted at 1:1000. The HRP-conjugated anti-rabbit IgG antibody (GTX213110-01) was used to detect the primary antibody.

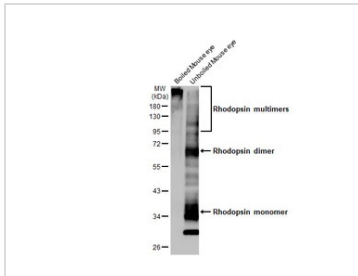
\*The competitor is not affiliated with GeneTex and does not endorse this product.



#### GTX639332 WB Image

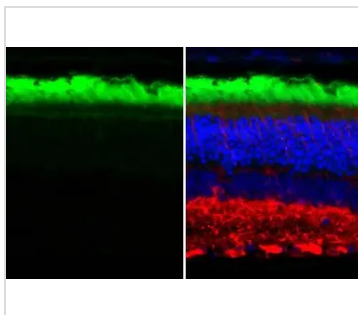
Non-transfected (–) and transfected (+) boiled and unboiled 293T whole cell extracts (30 µg) were separated by 10% SDS-PAGE, and the membranes were blotted with Rhodopsin antibody [HL2668] (GTX639332) diluted at 1:5000 and competitor's antibody (Clone 1D4) diluted at 1:5000. The HRP-conjugated anti-rabbit IgG antibody (GTX213110-01) was used to detect the primary antibody.

\*The competitor is not affiliated with GeneTex and does not endorse this product.



#### GTX639332 WB Image

Boiled and unboiled various tissue extracts (50 µg) were separated by 10% SDS-PAGE, and the membrane was blotted with Rhodopsin antibody [HL2668] (GTX639332) diluted at 1:1000. The HRP-conjugated anti-rabbit IgG antibody (GTX213110-01) was used to detect the primary antibody.



#### GTX639332 IHC-P Image

Rhodopsin antibody [HL2668] detects Rhodopsin protein by immunohistochemical analysis.

Sample: Paraffin-embedded mouse eye.

Rhodopsin stained by Rhodopsin antibody [HL2668] (GTX639332) diluted at 1:100.

Red: beta Tubulin 3/ Tuj1 stained by beta Tubulin 3/ Tuj1 antibody [GT11710] (GTX631836) diluted at 1:500.

Blue: Fluoroshield with DAPI (GTX30920).

Antigen Retrieval: Citrate buffer, pH 6.0, 15 min



For full product information, images and publications, please visit our [website](https://www.genetex.com).