

## Gfap antibody [HL2723]

**Cat. No. GTX639550**

<b>Host</b>	Rabbit
<b>Clonality</b>	Monoclonal
<b>Isotype</b>	IgG
<b>Applications</b>	WB, IHC-Wm
<b>Reactivity</b>	Zebrafish

**Package**  
100 µl, 25 µl

## Applications

**Application Note**

\*Optimal dilutions/concentrations should be determined by the researcher.

Suggested dilution	Recommended dilution
WB	1:500-1:3000
IHC-Wm	1:100-1:500

Not tested in other applications.

**Observed MW (kDa)** 51 kDa.

## Properties

<b>Form</b>	Liquid
<b>Buffer</b>	PBS
<b>Preservative</b>	No preservatives
<b>Storage</b>	Store as concentrated solution. Centrifuge briefly prior to opening vial. For short-term storage (1-2 weeks), store at 4°C. For long-term storage, aliquot and store at -20°C or below. Avoid multiple freeze-thaw cycles.
<b>Concentration</b>	1 mg/ml (Please refer to the vial label for the specific concentration.)
<b>Immunogen</b>	Recombinant fragment of zebrafish Gfap.
<b>Purification</b>	Affinity purified by Protein A.
<b>Conjugation</b>	Unconjugated

**Note**

For laboratory research use only. Not for any clinical, therapeutic, or diagnostic use in humans or animals. Not for animal or human consumption.

Purchasers shall not, and agree not to enable third parties to, analyze, copy, reverse engineer or otherwise attempt to determine the structure or sequence of the product.

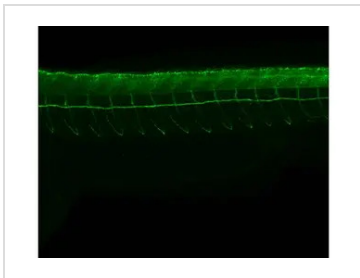


For full product information, images and publications, please visit our [website](#).

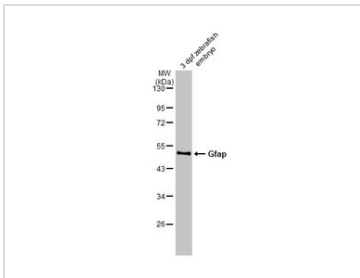
## DATA IMAGES

**GTX639550 IHC-Wm Image**

Gfap antibody [HL2723] detects Gfap protein on whole mount zebrafish by immunohistochemical analysis.  
 Sample: Paraformaldehyde-fixed 3 days-post-fertilization zebrafish embryo.  
 Green: Gfap stained by Gfap antibody [HL2723] (GTX639550) diluted at 1:100.  
 Antigen Retrieval: Tris-HCl buffer, pH 9.0, 20 min at 70°C

**GTX639550 IHC-Wm Image**

Gfap antibody [HL2723] detects Gfap protein on whole mount zebrafish by immunohistochemical analysis.  
 Sample: Paraformaldehyde-fixed 3 days-post-fertilization zebrafish embryo.  
 Green: Gfap stained by Gfap antibody [HL2723] (GTX639550) diluted at 1:100.  
 Antigen Retrieval: Tris-HCl buffer, pH 9.0, 20 min at 70°C

**GTX639550 WB Image**

Zebrafish embryo extracts (30 µg) was separated by 10% SDS-PAGE, and the membrane was blotted with Gfap antibody [HL2723] (GTX639550) diluted at 1:1000. The HRP-conjugated anti-rabbit IgG antibody (GTX213110-01) was used to detect the primary antibody.

**GTX639550 IHC-Wm Image**

Gfap antibody [HL2723] detects Gfap protein on whole mount zebrafish by immunohistochemical analysis.  
 Sample: Paraformaldehyde-fixed 2 days-post-fertilization zebrafish embryo.  
 Green: Gfap stained by Gfap antibody [HL2723] (GTX639550) diluted at 1:100.  
 Antigen Retrieval: Tris-HCl buffer, pH 9.0, 20 min at 70°C

**GTX639550 IHC-Wm Image**

Gfap antibody [HL2723] detects Gfap protein on whole mount zebrafish by immunohistochemical analysis.  
 Sample: Paraformaldehyde-fixed 2 days-post-fertilization zebrafish embryo.  
 Green: Gfap stained by Gfap antibody [HL2723] (GTX639550) diluted at 1:100.  
 Antigen Retrieval: Tris-HCl buffer, pH 9.0, 20 min at 70°C



For full product information, images and publications, please visit our [website](#).