

CTLA4 antibody [HL2732]

Cat. No. GTX639560

Host	Rabbit
Clonality	Monoclonal
Isotype	IgG
Applications	WB, IHC-P
Reactivity	Human

[References \(1 \)](#)

[Package](#)

100 µl, 25 µl

Applications

Application Note

*Optimal dilutions/concentrations should be determined by the researcher.

Suggested dilution	Recommended dilution
WB	Assay dependent
IHC-P	1:100-1:1000

Not tested in other applications.

Observed MW (kDa) 25 kDa.

Properties

Form	Liquid
Buffer	PBS
Preservative	No preservatives
Storage	Store as concentrated solution. Centrifuge briefly prior to opening vial. For short-term storage (1-2 weeks), store at 4°C. For long-term storage, aliquot and store at -20°C or below. Avoid multiple freeze-thaw cycles.
Concentration	1 mg/ml (Please refer to the vial label for the specific concentration.)
Immunogen	Recombinant fragment of mouse CTLA4.
Purification	Affinity purified by Protein A.
Conjugation	Unconjugated

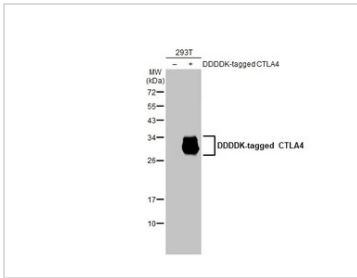
Note

For laboratory research use only. Not for any clinical, therapeutic, or diagnostic use in humans or animals. Not for animal or human consumption.

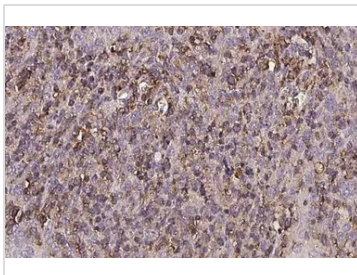
Purchasers shall not, and agree not to enable third parties to, analyze, copy, reverse engineer or otherwise attempt to determine the structure or sequence of the product.



For full product information, images and publications, please visit our [website](#).

DATA IMAGES

GTX639560 WB Image

Non-transfected (–) and transfected (+) 293T whole cell extracts (30 µg) were separated by 12% SDS-PAGE, and the membrane was blotted with CTLA4 antibody [HL2732] (GTX639560) diluted at 1:5000. The HRP-conjugated anti-rabbit IgG antibody (GTX213110-01) was used to detect the primary antibody.

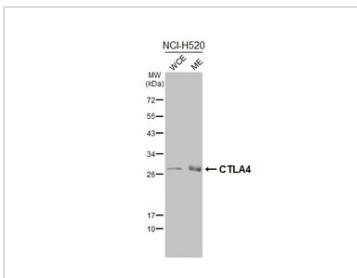

GTX639560 IHC-P Image

CTLA4 antibody [HL2732] detects CTLA4 protein by immunohistochemical analysis.

Sample: Paraffin-embedded human spleen.

CTLA4 stained by CTLA4 antibody [HL2732] (GTX639560) diluted at 1:500.

Antigen Retrieval: Citrate buffer, pH 6.0, 15 min


GTX639560 WB Image

NCI-H520 whole cell and membrane extracts (30 µg) were separated by 12% SDS-PAGE, and the membrane was blotted with CTLA4 antibody [HL2732] (GTX639560) diluted at 1:1000. The HRP-conjugated anti-rabbit IgG antibody (GTX213110-01) was used to detect the primary antibody. (WCE: whole cell extract; ME: membrane extract)



For full product information, images and publications, please visit our [website](https://www.genetex.com).