

CXCR4 antibody [HL2734]

Cat. No. GTX639562

Host	Rabbit
Clonality	Monoclonal
Isotype	IgG
Applications	ICC/IF
Reactivity	Human

Package
100 µl, 25 µl

Applications

Application Note

*Optimal dilutions/concentrations should be determined by the researcher.

Suggested dilution	Recommended dilution
ICC/IF	1:100-1:1000

Not tested in other applications.

Product Note This antibody was raised against human CXCR4 Extracellular domain.

Properties

Form	Liquid
Buffer	PBS
Preservative	No preservative
Storage	Store as concentrated solution. Centrifuge briefly prior to opening vial. For short-term storage (1-2 weeks), store at 4°C. For long-term storage, aliquot and store at -20°C or below. Avoid multiple freeze-thaw cycles.
Concentration	1 mg/ml (Please refer to the vial label for the specific concentration.)
Immunogen	carrier-protein conjugated synthetic peptide encompassing a sequence within the Extracellular domain of human CXCR4. The exact sequence is proprietary.
Purification	Affinity purified by Protein A.
Conjugation	Unconjugated

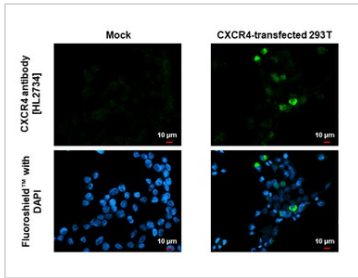
Note

For laboratory research use only. Not for any clinical, therapeutic, or diagnostic use in humans or animals. Not for animal or human consumption.

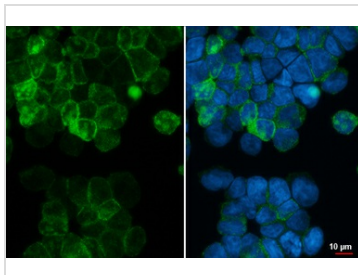
Purchasers shall not, and agree not to enable third parties to, analyze, copy, reverse engineer or otherwise attempt to determine the structure or sequence of the product.



For full product information, images and publications, please visit our [website](#).

DATA IMAGES

GTX639562 ICC/IF Image

CXCR4 antibody [HL2734] detects CXCR4 protein by immunofluorescent analysis.
 Sample: Mock and transfected 293T cells were fixed in ice-cold MeOH for 5 min.
 Green: CXCR4 stained by CXCR4 antibody [HL2734] (GTX639562) diluted at 1:500.
 Blue: Fluoroshield with DAPI (GTX30920).


GTX639562 ICC/IF Image

CXCR4 antibody [HL2734] detects CXCR4 protein by immunofluorescent analysis.
 Sample: Jurkat cells were fixed in 4% paraformaldehyde at RT for 15 min.
 Green: CXCR4 stained by CXCR4 antibody [HL2734] (GTX639562) diluted at 1:500.
 Blue: Fluoroshield with DAPI (GTX30920).



For full product information, images and publications, please visit our [website](https://www.genetex.com).