

## Tau antibody [HL2736]

Cat. No. GTX639564

Host	Rabbit
Clonality	Monoclonal
Isotype	IgG
Applications	WB, ICC/IF, IHC-Fr
Reactivity	Human, Mouse, Rat

★★★★★ Review ( 1 )

Package  
100 µl, 25 µl

## Applications

## Application Note

\*Optimal dilutions/concentrations should be determined by the researcher.

Suggested dilution	Recommended dilution
WB	1:500-1:3000
ICC/IF	Assay dependent
IHC-Fr	Assay dependent

Not tested in other applications.

Observed MW (kDa) 48-140 kDa.

## Properties

Form	Liquid
Buffer	PBS
Preservative	No preservatives
Storage	Store as concentrated solution. Centrifuge briefly prior to opening vial. For short-term storage (1-2 weeks), store at 4°C. For long-term storage, aliquot and store at -20°C or below. Avoid multiple freeze-thaw cycles.
Concentration	1 mg/ml (Please refer to the vial label for the specific concentration.)
Immunogen	Recombinant fragment of human Tau.
Purification	Affinity purified by Protein A.
Conjugation	Unconjugated

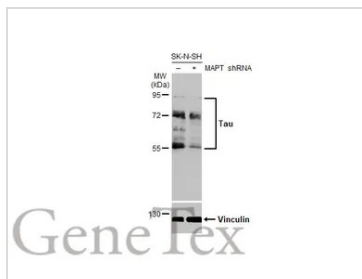
## Note

For laboratory research use only. Not for any clinical, therapeutic, or diagnostic use in humans or animals. Not for animal or human consumption.

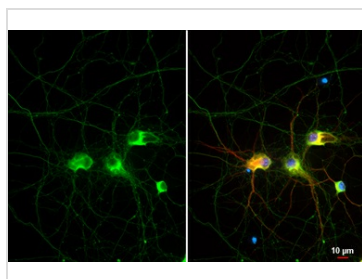
Purchasers shall not, and agree not to enable third parties to, analyze, copy, reverse engineer or otherwise attempt to determine the structure or sequence of the product.

For full product information, images and publications, please visit our [website](#).

## DATA IMAGES

**GTX639564 WB Image**

Non-transfected (-) and transfected (+) SK-N-SH whole cell extracts (30 µg) were separated by 7.5% SDS-PAGE, and the membrane was blotted with Tau antibody [HL2736] (GTX639564) diluted at 1:500. The HRP-conjugated anti-rabbit IgG antibody (GTX213110-01) was used to detect the primary antibody, and the signal was developed with Trident ECL plus-Enhanced.

**GTX639564 ICC/IF Image**

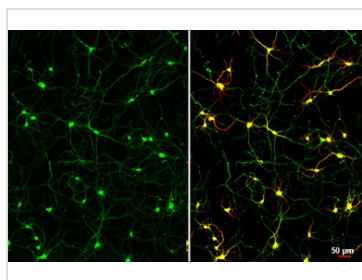
Tau antibody [HL2736] detects Tau protein by immunofluorescent analysis.

Sample: DIV11 rat E18 primary cortical neuron cells were fixed in 4% paraformaldehyde at RT for 15 min.

Green: Tau stained by Tau antibody [HL2736] (GTX639564) diluted at 1:250.

Red: MAP2, a microtubule marker, stained by MAP2 antibody [HM-2] (GTX11267) diluted at 1:500.

Blue: Fluoroshield with DAPI (GTX30920).

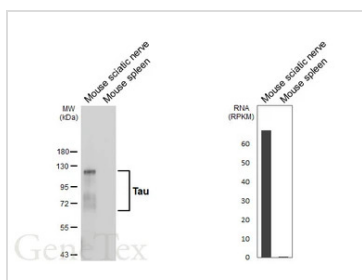
**GTX639564 ICC/IF Image**

Tau antibody [HL2736] detects Tau protein by immunofluorescent analysis.

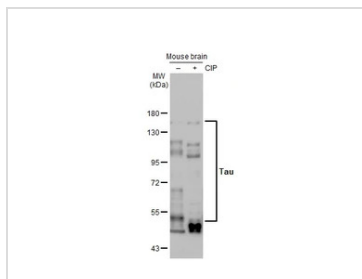
Sample: DIV11 rat E18 primary cortical neuron cells were fixed in 4% paraformaldehyde at RT for 15 min.

Green: Tau stained by Tau antibody [HL2736] (GTX639564) diluted at 1:250.

Red: MAP2, a microtubule marker, stained by MAP2 antibody [HM-2] (GTX11267) diluted at 1:500.

**GTX639564 WB Image**

Various tissue extracts (50 µg) were separated by 7.5% SDS-PAGE, and the membrane was blotted with Tau antibody [HL2736] (GTX639564) diluted at 1:1000. The HRP-conjugated anti-rabbit IgG antibody (GTX213110-01) was used to detect the primary antibody. Corresponding RNA expression data are based on NCBI database.

**GTX639564 WB Image**

Untreated (-) and treated (+) mouse tissue extract (50 µg) were separated by 7.5% SDS-PAGE, and the membrane was blotted with Tau antibody [HL2736] (GTX639564) diluted at 1:1000. The HRP-conjugated anti-rabbit IgG antibody (GTX213110-01) was used to detect the primary antibody.



For full product information, images and publications, please visit our [website](https://www.genetex.com).