

EPO antibody [HL2752]

Cat. No. GTX639615

Host	Rabbit
Clonality	Monoclonal
Isotype	IgG
Applications	ELISA, Neutralizing/Inhibition
Reactivity	Human

Package
100 µl, 25 µl

Applications

Application Note

*Optimal dilutions/concentrations should be determined by the researcher.

Suggested dilution	Recommended dilution
ELISA	Assay dependent
Neutralizing/Inhibition	Assay dependent

Not tested in other applications.

Calculated MW 21 kDa. ([Note](#))

Properties

Form	Liquid
Buffer	PBS
Preservative	No preservatives
Storage	Store as concentrated solution. Centrifuge briefly prior to opening vial. For short-term storage (1-2 weeks), store at 4°C. For long-term storage, aliquot and store at -20°C or below. Avoid multiple freeze-thaw cycles.
Concentration	1 mg/ml (Please refer to the vial label for the specific concentration.)
Immunogen	Full length of human EPO.
Purification	Affinity purified by Protein A.
Conjugation	Unconjugated

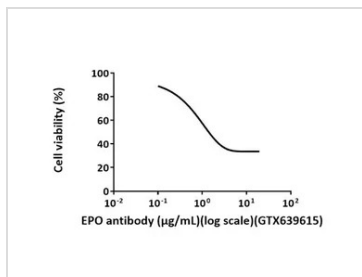
Note

For laboratory research use only. Not for any clinical, therapeutic, or diagnostic use in humans or animals. Not for animal or human consumption.

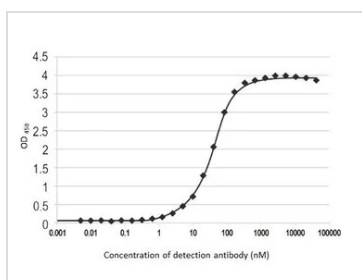
Purchasers shall not, and agree not to enable third parties to, analyze, copy, reverse engineer or otherwise attempt to determine the structure or sequence of the product.



For full product information, images and publications, please visit our [website](#).

DATA IMAGES

GTX639615 Neutralizing/Inhibition Image

The cell proliferation of the TF-1 human erythroleukemic cell line induced by Human Erythropoietin/EPO and neutralization by Erythropoietin Antibody. Proliferation elicited by Recombinant Human Erythropoietin/EPO (0.4 ng/mL) is neutralized by increasing concentrations of EPO antibody [HL2752] (GTX639615).


GTX639615 ELISA Image

Indirect ELISA analysis was performed by coating the plate with recombinant HEK293 expressed, full-length EPO protein, His tag (50 ng). Coated protein was probed with EPO antibody [HL2752] (GTX639615) (40960-4.88*10⁻³ nM). Goat anti-rabbit IgG antibody (HRP) (GTX213110-01) (1:10000) was used to detect the bound primary antibody.

EC50 : 36.04 nM



For full product information, images and publications, please visit our [website](https://www.genetex.com).