

SSTR5 antibody [HL2756]

Cat. No. GTX639619

Host	Rabbit
Clonality	Monoclonal
Isotype	IgG
Applications	WB
Reactivity	Human

Package
100 µl, 25 µl

Applications

Application Note

*Optimal dilutions/concentrations should be determined by the researcher.

Suggested dilution	Recommended dilution
WB	1:500-1:10000

Not tested in other applications.

Observed MW (kDa) 50 kDa.

Product Note

This antibody is specific for human SSTR5 protein, and it does not cross react with human SSTR1, SSTR2, SSTR3, and SSTR4 protein.
This antibody was raised against human SSTR5 Intracellular domain.

Properties

Form	Liquid
Buffer	PBS
Preservative	No preservatives
Storage	Store as concentrated solution. Centrifuge briefly prior to opening vial. For short-term storage (1-2 weeks), store at 4°C. For long-term storage, aliquot and store at -20°C or below. Avoid multiple freeze-thaw cycles.
Concentration	1 mg/ml (Please refer to the vial label for the specific concentration.)
Immunogen	Synthetic peptide encompassing a sequence within the Intracellular domain human of SSTR5. The exact sequence is proprietary.
Purification	Affinity purified by Protein A.
Conjugation	Unconjugated

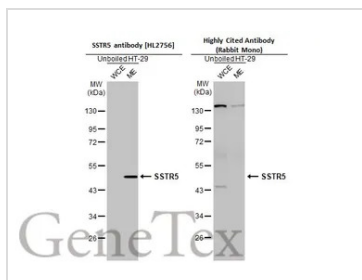


For full product information, images and publications, please visit our [website](#).

For laboratory research use only. Not for any clinical, therapeutic, or diagnostic use in humans or animals. Not for animal or human consumption.

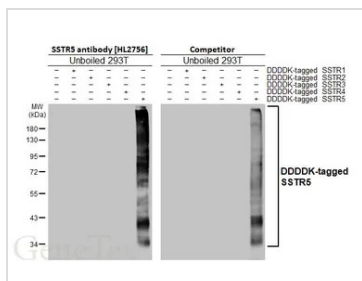
Note

Purchasers shall not, and agree not to enable third parties to, analyze, copy, reverse engineer or otherwise attempt to determine the structure or sequence of the product.

DATA IMAGES

GTX639619 WB Image

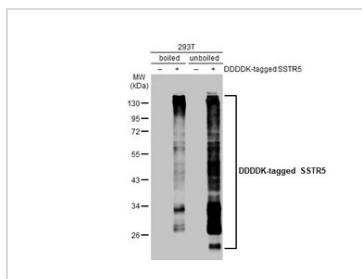
Unboiled HT-29 extracts (30 µg) were separated by 10% SDS-PAGE, and the membranes were blotted with SSTR5 antibody [HL2756] (GTX639619) diluted at 1:1000 and competitor's antibody (Competitor) diluted at 1:1000. The HRP-conjugated anti-rabbit IgG antibody (GTX213110-01) was used to detect the primary antibody. (WCE: whole cell extract; ME: membrane extract)

*The competitor is not affiliated with GeneTex and does not endorse this product.

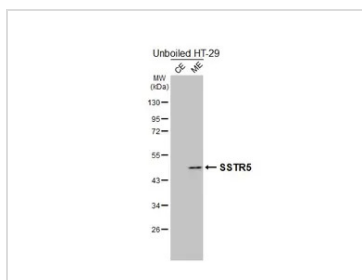

GTX639619 WB Image

Non-transfected (–) and transfected (+) unboiled 293T whole cell extracts were separated by 10% SDS-PAGE, and the membranes were blotted with SSTR5 antibody [HL2756] (GTX639619) diluted at 1:5000 and competitor's antibody diluted at 1:5000. The HRP-conjugated anti-rabbit IgG antibody (GTX213110-01) was used to detect the primary antibody.

*The competitor is not affiliated with GeneTex and does not endorse this product.


GTX639619 WB Image

Non-transfected (–) and transfected (+) boiled and unboiled 293T whole cell extracts (30 µg) were separated by 10% SDS-PAGE, and the membrane was blotted with SSTR5 antibody [HL2756] (GTX639619) diluted at 1:5000. The HRP-conjugated anti-rabbit IgG antibody (GTX213110-01) was used to detect the primary antibody.


GTX639619 WB Image

Unboiled HT-29 cytosol extract and membrane extract (30 µg) were separated by 10% SDS-PAGE, and the membrane was blotted with SSTR5 antibody [HL2756] (GTX639619) diluted at 1:1000. The HRP-conjugated anti-rabbit IgG antibody (GTX213110-01) was used to detect the primary antibody. (ME: membrane extract; CE: cytosol extract)



For full product information, images and publications, please visit our [website](https://www.genetex.com).