

MX1 antibody [HMV316] HistoMAX™

Cat. No. GTX639940

Host	Rabbit
Clonality	Monoclonal
Isotype	IgG
Applications	IHC-P
Reactivity	Human

Package

500 µl, 100 µl

PRODUCT

This antibody was validated on 76 different Normal Tissues by IHC-P.

Summary

[Go to Normal Tissue Gallery](#)

[Go to Cancer Tissue Gallery](#)

Applications

Application Note

*Optimal dilutions/concentrations should be determined by the researcher.

Suggested dilution	Recommended dilution
IHC-P	1:100-1:200

Note : Heat-induced antigen retrieval for 5 minutes in an autoclave at 121°C in pH 7.8 Target Retrieval Solution buffer.

Not tested in other applications.

Product Note

Highly recommended for IHC-P in human tissues.

Properties

Form	Liquid
Buffer	PBS, 2% BSA
Preservative	0.025% ProClin 300
Storage	Store as concentrated solution. Centrifuge briefly prior to opening vial. For short-term storage (1-2 weeks), store at 4°C. For long-term storage, aliquot and store at -20°C or below. Avoid multiple freeze-thaw cycles.
Concentration	28 µg/ml (Please refer to the vial label for the specific concentration.)
Immunogen	Recombinant fragment of human MX1
Purification	Affinity purified by Protein A.
Conjugation	Unconjugated

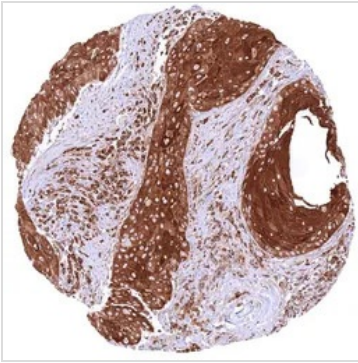


For full product information, images and publications, please visit our [website](#).

For laboratory research use only. Not for any clinical, therapeutic, or diagnostic use in humans or animals. Not for animal or human consumption.

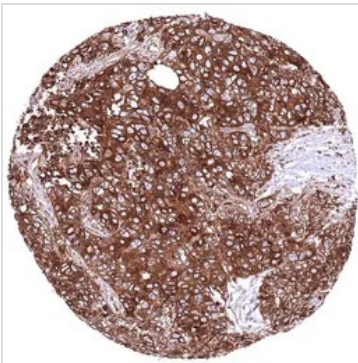
Note

Purchasers shall not, and agree not to enable third parties to, analyze, copy, reverse engineer or otherwise attempt to determine the structure or sequence of the product.

DATA IMAGES

GTX639940 IHC-P Image

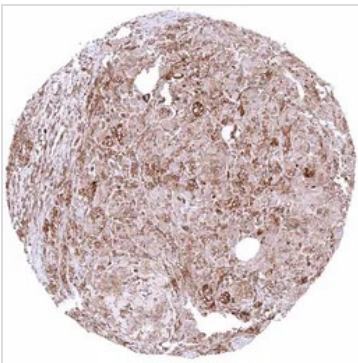
IHC-P analysis of human laryngeal squamous cell carcinoma (LSCC) tissue using GTX639940 MX1 antibody [HMOV316] HistoMAX™.

Squamous cell carcinoma with strong MX1 staining of tumor cells. Stromal and inflammatory cells show a less intense MX1 staining.


GTX639940 IHC-P Image

IHC-P analysis of human prostatic adenocarcinoma (PAC) tissue with (Gleason 5+5=10) tissue using GTX639940 MX1 antibody [HMOV316] HistoMAX™.

Adenocarcinoma (Gleason 5+5=10) with strong MX1 immunostaining of tumor cells.


GTX639940 IHC-P Image

IHC-P analysis of human pancreas tissue using GTX639940 MX1 antibody [HMOV316] HistoMAX™.

Strong cytoplasmic MX1 staining of all epithelial cell types in a sample with some inflammation and scar formation.



For full product information, images and publications, please visit our [website](https://www.genetex.com).