

## P2Y11 antibody [HL2821]

Cat. No. GTX640092

Host	Rabbit
Clonality	Monoclonal
Isotype	IgG
Applications	ICC/IF, IHC-P
Reactivity	Human

Package  
100 µl, 25 µl

## Applications

## Application Note

\*Optimal dilutions/concentrations should be determined by the researcher.

Suggested dilution	Recommended dilution
ICC/IF	Assay dependent
IHC-P	Assay dependent

Not tested in other applications.

**Product Note** This antibody was raised against human P2Y11 Intracellular domain.

## Properties

Form	Liquid
Buffer	PBS
Preservative	No preservative
Storage	Store as concentrated solution. Centrifuge briefly prior to opening vial. For short-term storage (1-2 weeks), store at 4°C. For long-term storage, aliquot and store at -20°C or below. Avoid multiple freeze-thaw cycles.
Concentration	1 mg/ml (Please refer to the vial label for the specific concentration.)
Immunogen	Synthetic peptide encompassing a sequence within the Intracellular domain of human P2Y11. The exact sequence is proprietary.
Purification	Affinity purified by Protein A.
Conjugation	Unconjugated

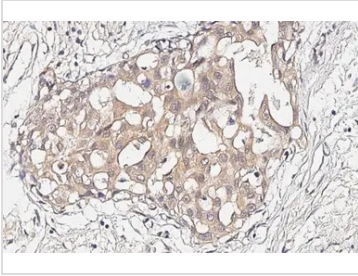
**Note** For laboratory research use only. Not for any clinical, therapeutic, or diagnostic use in humans or animals. Not for animal or human consumption.

Purchasers shall not, and agree not to enable third parties to, analyze, copy, reverse engineer or otherwise attempt to determine the structure or sequence of the product.



For full product information, images and publications, please visit our [website](#).

## DATA IMAGES



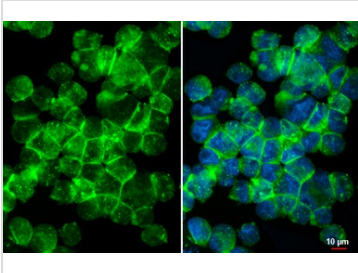
### GTX640092 IHC-P Image

P2Y11 antibody [HL2821] detects P2Y11 protein by immunohistochemical analysis.

Sample: Paraffin-embedded human breast carcinoma.

P2Y11 stained by P2Y11 antibody [HL2821] (GTX640092) diluted at 1:220.

Antigen Retrieval: Citrate buffer, pH 6.0, 15 min



### GTX640092 ICC/IF Image

P2Y11 antibody [HL2821] detects P2Y11 protein by immunofluorescent analysis.

Sample: TF-1 cells were fixed in 4% paraformaldehyde at RT for 15 min.

Green: P2Y11 stained by P2Y11 antibody [HL2821] (GTX640092) diluted at 1:100.

Blue: Fluoroshield with DAPI (GTX30920).



For full product information, images and publications, please visit our [website](#).