

Endothelin B Receptor antibody [HL2832]

Cat. No. GTX640103

Host	Rabbit
Clonality	Monoclonal
Isotype	IgG
Applications	IHC-P
Reactivity	Human, Mouse, Rat

Package
100 µl, 25 µl

Applications

Application Note

*Optimal dilutions/concentrations should be determined by the researcher.

Suggested dilution	Recommended dilution
IHC-P	1:100-1:1000

Not tested in other applications.

Product Note This antibody was raised against Rat Endothelin B Receptor Intracellular domain.

Properties

Form	Liquid
Buffer	PBS
Preservative	No preservatives
Storage	Store as concentrated solution. Centrifuge briefly prior to opening vial. For short-term storage (1-2 weeks), store at 4°C. For long-term storage, aliquot and store at -20°C or below. Avoid multiple freeze-thaw cycles.
Concentration	1 mg/ml (Please refer to the vial label for the specific concentration.)
Immunogen	Synthetic peptide encompassing a sequence within the Intracellular domain of Rat Endothelin B Receptor. The exact sequence is proprietary.
Purification	Affinity purified by Protein A.
Conjugation	Unconjugated

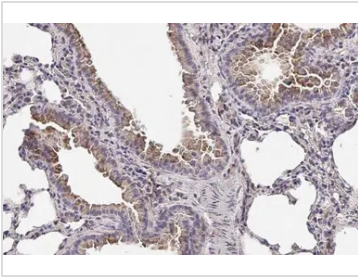
Note

For laboratory research use only. Not for any clinical, therapeutic, or diagnostic use in humans or animals. Not for animal or human consumption.

Purchasers shall not, and agree not to enable third parties to, analyze, copy, reverse engineer or otherwise attempt to determine the structure or sequence of the product.



For full product information, images and publications, please visit our [website](#).

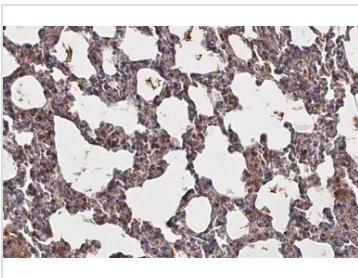
DATA IMAGES

GTx640103 IHC-P Image

Endothelin B Receptor antibody [HL2832] detects Endothelin B Receptor protein at cell membrane by immunohistochemical analysis.

Sample: Paraffin-embedded mouse lung.

Endothelin B Receptor stained by Endothelin B Receptor antibody [HL2832] (GTx640103) diluted at 1:100.

Antigen Retrieval: Citrate buffer, pH 6.0, 15 min

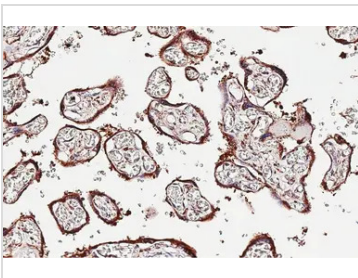

GTx640103 IHC-P Image

Endothelin B Receptor antibody [HL2832] detects Endothelin B Receptor protein at cell membrane and cytoplasm by immunohistochemical analysis.

Sample: Paraffin-embedded rat lung.

Endothelin B Receptor stained by Endothelin B Receptor antibody [HL2832] (GTx640103) diluted at 1:100.

Antigen Retrieval: Citrate buffer, pH 6.0, 15 min


GTx640103 IHC-P Image

Endothelin B Receptor antibody [HL2832] detects Endothelin B Receptor protein by immunohistochemical analysis.

Sample: Paraffin-embedded human placenta.

Endothelin B Receptor stained by Endothelin B Receptor antibody [HL2832] (GTx640103) diluted at 1:2500.

Antigen Retrieval: Citrate buffer, pH 6.0, 15 min



For full product information, images and publications, please visit our [website](https://www.genetex.com).